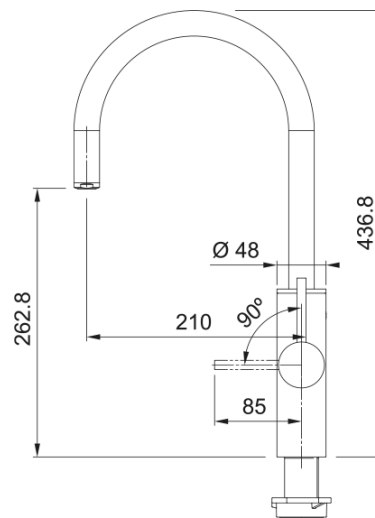


Mythos Water Hub 6in1 Electronic StSteel | 160.0709.049



Introducing the innovative Mythos 6-in-1 Water Hub in sleek Stainless Steel, delivering cold and hot water alongside four advanced filtered water functions. Designed for premium performance and everyday convenience, it combines cutting-edge technology with a streamlined, space-saving solution. Additional performance features include: Four filtered water functions including instant 100°C boiling, chilled, ambient and sparkling water for complete versatility. | Built-in RFID filter replacement reminder ensures optimal performance and hassle-free maintenance. | Advanced Pro-M Connect filter with ion exchange resin improves water taste and helps protect the system from limescale and mineral build-up, supporting long-term efficiency and reliability. | Smart app connectivity allows users to personalise settings and tailor their water experience. | Electronic LED handle clearly indicates the four filtered water functions for intuitive, easy use. | All-in-one box solution houses the boiler, chiller, CO2 bottle and filter, simplifying installation and saving space. | You can be reassured that all our Water Hub models are approved for use with all Franke sinks - Stainless Steel, Fraganite, Tectonite or Ceramic.
