



HYDROTAP RANGE

The latest from the world leader
in instantly filtered water.





INDEX

HydroTap® G5 Range Introduction	4 - 15
HydroTap G5 Residential Range	16 - 29
HydroTap G5 Commercial Range	30-35
Hydroboil Plus	36 - 39
Hydroboil	40 - 45
Chilltap	46
Chillmaster & Economaster	47 - 49
ZIP Filtration	52 - 53
Important Safety Notice	54
How to install the Hydrotap Command Centre	55

INTRODUCING THE HYDROTAP® G5

RANGE

INSTANTLY FILTERED,
BOILING, CHILLED & SPARKLING
WATER ON TAP



POWERED BY
G5
TECHNOLOGY

PowerPulse technology



Our innovative Zip PowerPulse technology maintains stored boiling water to within 0.2°C of your set temperature, meaning no energy or time is wasted waiting for water to boil.

Unique safety features



Zip boiling water is delivered smoothly and the tap has a safety lock to facilitate safe boiling water delivery.

Air-cooled system



Our unique air-cooled refrigeration system is 100% water efficient.

Auto-diagnostics



An advanced auto-diagnostics system continuously monitors your HydroTap's performance.

Powered by our latest G5 technology

Embodying functionality, the HydroTap is ideal for those who want appliances that save time, reduce energy, are straightforward to use, simple to maintain and make life in the kitchen a whole lot easier.

Welcome the convenience of cooking, sterilising bottles and making tea or coffee with instant boiling water and the handiness of pouring a perfectly chilled still or sparkling glass of water whenever you need it.

2 Year
Warranty



MICROPURITY™ FILTRATION

SAFELY FILTERS DOWN TO 0.2 MICRON

Inbuilt 0.2 micron NSF-certified filter incorporating innovative silver ion antimicrobial technology means healthier, pure-tasting water.



SteriTouch® antimicrobial protection

SteriTouch® is embedded inside materials in contact with key water paths in HydroTap; Touch Pad, Tubes and Manifold for added protection against bacteria.



CO₂ level indicator

New feature in the command centre shows when CO₂ gas is running low.



Smart Customisation

New optimised menu in the G5 HydroTap command centre allows you to select energy modes and usage settings for easier customisation.



THE SAFEST INSTANT BOILING WATER

Boiling water safety lock

Unique boiling water dispensing safety features requires a dual action reducing the likelihood of accidentally activating the boiling water which means little ones are safer.

Cool touch tap

The HydroTap is cool to the touch and doesn't produce any spluttering steam, which means it's always safe to use.

SMARTER, MORE INTUITIVE USER INTERFACE, RE-DESIGNED WITH USER EXPERIENCE IN MIND

The new interactive interface makes it so simple to customise your Hydrotap settings.

- Intuitive home screen with easy access to set temperatures for boiling and chilled water, filter and CO₂ life, and energy saving modes and settings
- Quiet mode adjusts the fan speed used as part of the chilling process. Intelligent fan speed automatically adjusts the fan speed between 100, 75 and 50% which can make the Hydrotap G5 quieter during low use.
- Energy saving settings give you the opportunity to set ON and OFF timers letting you set the times your Hydrotap can be used weekly or daily.
- Sleep modes reduce the Hydrotaps power consumption if the tap has not been used for 2 hours. 'Sleep when it's dark function' puts your Hydrotap to sleep when the lights have been turned off.

INSTALLATION REQUIREMENTS

- You will require suitable mains electrical and drinking water connections, plus waste water drainage all within 1.5 metres of the product.
- Discrete cabinetry cut outs are required for airflow. 40mm minimum clearance on cupboard base overhang required otherwise alternative installation options are available.
- Installation on most bench tops is straightforward however some stone bench tops may require a specialised cutting service.
- For more information, please refer to full installation instruction.



WARNING: We recommend surge protectors be installed on all hydrotaps new and existing.

CLAIMS - Micron Rating 0.2

Total PFAS	✓	Cyst	✓
Asbestos	✓	Sediment	✓
Microplastics	✓	Limescale	✓
Lead	✓	Chlorine Taste & Odour	✓
Bacteria Growth	✓		

MicroPurity

8 in 1 FILTRATION



NEW LOOK FILTERS



The Zip MicroPurity 0.2-micron filters (93701 & 93702) are certified to remove 99.43% of PFAS.

What are PFAS chemicals?

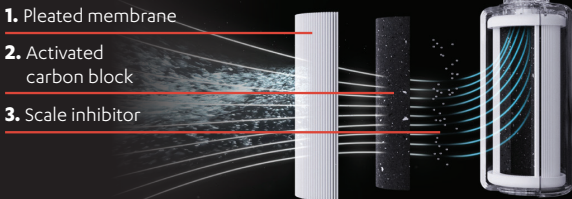
PFAS (Per- and Polyfluoroalkyl Substances) are a group of thousands of man-made chemicals used in various industries. They are found in products such as non-stick cookware, water-repellent clothing, stain-resistant fabrics, and firefighting foams. PFAS are known for their persistence in the environment and the human body, earning them the nickname "forever chemicals". The most studied of these chemicals are PFOA and PFOS, which have been shown to have a wide range of negative health effects.

Why are PFAS chemicals a concern?

PFAS chemicals are a concern because they do not break down easily in the environment and can accumulate over time. Exposure to PFAS has been linked to various health issues, including liver damage, thyroid disease, decreased fertility, high cholesterol, obesity, hormone suppression, and cancer.

Triple Action Technology

1. Pleated membrane
2. Activated carbon block
3. Scale inhibitor



Zip Genuine filters are proven to remove 99.8% of contaminants throughout their life, even the ones you can't see, smell or taste.

Genuine Zip MicroPurity filters are tested and certified to NSF Standard 42 (Aesthetic Effects) and 53 (Health Effects) to ensure they meet the highest standards, delivering an unrivalled drinking water experience.

When you choose a genuine Zip MicroPurity filter, you also get peace of mind that every glass will deliver water at its best.



*Applies for Zip 0.2 micron filters with carbon only (93701, 93702, 93704 and 91290)



Life just got easier with the Zip HydroTap.

**Filtered boiling water for tea,
chilled water to hydrate,
or sparkling water to elevate
your day—all at the touch
of a button. Convenience,
style, and innovation,
right at your fingertips.**

Our mission is to help our customers to
enjoy pure-tasting water, on tap, all the
time, and that is why only the best tasting
water will do.



Classic Plus



Arc Plus



Cube Plus

HYDROTAP

Classic Plus



- Simple intuitive controls for boiling, chilled and sparkling water
- Continuous flow mode to fill bottles
- Boiling water safety lock
- SteriTouch for Touch pad protection

Available water options & finishes:

Available in		
<div>FILTERED: BOILING CHILLED SPARKLING</div>	<div>FILTERED: BOILING CHILLED</div>	<div>FILTERED: BOILING AMBIENT</div>
<div></div>	<div></div>	<div></div>
CHROME	BRUSHED CHROME	MATTE BLACK



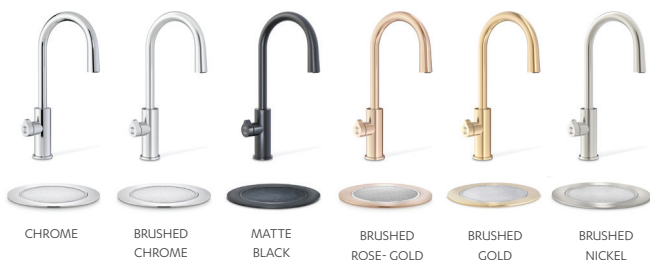
HYDROTAP

Arc Plus

protected by
Steriflouch



- Upgraded hoses to reduce splutter and dripping
- Aerator added to improve sparkling water quality
- Flared spout to accomodate aerator and hoses



MATCHING FONT KIT ASSEMBLY SOLD SEPARATELY (OPTIONAL EXTRA)

Available water options

FILTERED:
BOILING
CHILLED
SPARKLING



FILTERED:
BOILING
CHILLED



HYDROTAP

Cube Plus



- Upgraded hoses to reduce splutter and dripping
- Aerator added to improve sparkling water quality
- Flared spout to accommodate aerator and hoses



MATCHING FONT KIT ASSEMBLY SOLD SEPARATELY (OPTIONAL EXTRA)

Available water options

FILTERED:

BOILING
CHILLED
SPARKLING



FILTERED:

BOILING
CHILLED



Residential Range

UP TO 8 PEOPLE



**BOILING,
CHILLED &
SPARKLING**

G5 BCS Home
Command Centre
333 H x 339 W x 483 D

***CO₂ CYLINDER
SOLD SEPARATELY**

2330332 ZIP CO₂ Gas Cartridge
(2 Per Pack)





2990057 CLASSIC PLUS BCS G5 CHROME

Optional Accessories



2330810
Raised Font Kit
- Chrome



2330200
Classic Font Kit
- Chrome



2330304
Tap Extension
- Chrome



2990103 ARC PLUS BCS G5 CHROME

Optional Accessories

2330504
Font Kit Assembly - Chrome



2990104 CUBE PLUS BCS G5 CHROME

Optional Accessories

2330504
Font Kit Assembly - Chrome





2990113 CLASSIC PLUS BCS G5 BRUSHED CHROME

Optional Accessories



2330890
Raised Font Kit
- Brushed Chrome



2330891
Classic Font Kit -
Brushed Chrome



2330892
Tap Extension
- Brushed Chrome



2990112 ARC PLUS BCS G5 BRUSHED CHROME

Optional Accessories

2330880
Font Kit Assembly - Brushed Chrome



2990117 CUBE PLUS BCS G5 BRUSHED CHROME

Optional Accessories

2330880
Font Kit Assembly - Brushed Chrome





2990060 CLASSIC PLUS BCS G5 MATT BLACK

Optional Accessories



2330811
Raised Font Kit
- Matt Black



2330435
Classic Font Kit
- Matt Black



2330506
Tap Extension
- Matt Black



2990105 ARC PLUS BCS G5 MATT BLACK

Optional Accessories

2330436
Font Kit Assembly - Matt Black



2990106 CUBE PLUS BCS G5 MATT BLACK

Optional Accessories

2330436
Font Kit Assembly - Matt Black



**2990063****ARC PLUS BCS G5
BRUSHED ROSE-GOLD**

Optional Accessories

2330736

Font Kit Assembly - Brushed Rose-Gold

**2990064****CUBE PLUS BCS G5
BRUSHED ROSE-GOLD**

Optional Accessories

2330736

Font Kit Assembly - Brushed Rose-Gold

**2990065****ARC PLUS BCS G5
BRUSHED GOLD**

Optional Accessories

2330735

Font Kit Assembly - Brushed Gold

**2990066****CUBE PLUS BCS G5
BRUSHED GOLD**

Optional Accessories

2330735

Font Kit Assembly - Brushed Gold





2990115
ARC PLUS BCS G5
BRUSHED NICKEL

Optional Accessories

2610317

Font Kit Assembly - Brushed Nickel



2990123
CUBE PLUS BCS G5
BRUSHED NICKEL

Optional Accessories

2610317

Font Kit Assembly - Brushed Nickel



Carbon Dioxide

The CO₂ gas cylinder must be secured in a suitable location using the strap provided. The gas regulator (supplied) must be fitted. Each cylinder contains 1 kg of CO₂ and should be installed in a well ventilated area or a room of not less than 38 cubic metres.



CO₂

GAS CARTRIDGE

CO₂ Gas Cylinder gives approximately 150 to 160 liters of sparkling water, equivalent to 750 glasses of sparkling water.

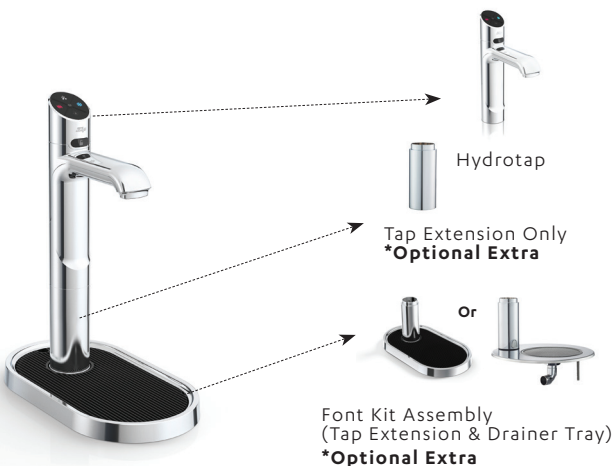
Filter cartridges should be replaced after 6,435 litres or every 12 months, or earlier if a high level of water usage makes it necessary. You can replace filter cartridges yourself, or ask for a trained Zip Service Provider to replace them at set intervals.

2330332	ZIP CO ₂ Gas Cartridge (2 Per Pack)
---------	---



Please note that commercial units are not supplied with a CO₂ regulator - this is supplied separately

HOW TO BUILD YOUR HYDROTAP



Residential Range

UP TO 8 PEOPLE



BOILING & CHILLED



G5 BC Home

Command Centre

333 H x 280 W x 478 D



2990069 CLASSIC PLUS BC G5 CHROME

Optional Accessories



2330810
Raised Font Kit
- Chrome



2330200
Classic Font Kit
- Chrome



2330304
Tap Extension
- Chrome



2990107 ARC PLUS BC G5 CHROME

Optional Accessories

2330504
Font Kit Assembly - Chrome



2990108 CUBE PLUS BC G5 CHROME

Optional Accessories

2330504
Font Kit Assembly - Chrome





2990121
CLASSIC PLUS BC G5
BRUSHED CHROME

Optional Accessories



2330890
Raised Font Kit
- Brushed Chrome



2330891
Classic Font Kit -
Brushed Chrome



2330892
Tap Extension
- Brushed Chrome



2990119
ARC PLUS BC G5
BRUSHED CHROME

Optional Accessories

2330880
Font Kit Assembly - Brushed Chrome



2990120
CUBE PLUS BC G5
BRUSHED CHROME

Optional Accessories

2330880
Font Kit Assembly - Brushed Chrome





2990072
CLASSIC PLUS BC G5
MATT BLACK

Optional Accessories



2330811
Raised Font Kit
- Matt Black



2330435
Classic Font Kit
- Matt Black



2330506
Tap Extension
- Matt Black



2990109
ARC PLUS BC G5
MATT BLACK

Optional Accessories

2330436
Font Kit Assembly - Matt Black



2990110
CUBE PLUS BC G5
MATT BLACK

Optional Accessories

2330436
Font Kit Assembly - Matt Black





2990111
ARC PLUS BC G5
BRUSHED ROSE-GOLD

Optional Accessories

2330736

Font Kit Assembly - Brushed Rose-Gold



2990076
CUBE PLUS BC G5
BRUSHED ROSE-GOLD

Optional Accessories

2330736

Font Kit Assembly - Brushed Rose-Gold



2990077
ARC PLUS BC G5
BRUSHED GOLD

Optional Accessories

2330735

Font Kit Assembly - Brushed Gold



2990078
CUBE PLUS BC G5
BRUSHED GOLD

Optional Accessories

2330735

Font Kit Assembly - Brushed Gold





2990122
ARC PLUS BC G5
BRUSHED NICKEL

Optional Accessories

2610317

Font Kit Assembly - Brushed Nickel



2990124
CUBE PLUS BC G5
BRUSHED NICKEL

Optional Accessories

2610317

Font Kit Assembly - Brushed Nickel



Commercial Range

UP TO 60 PEOPLE





**BOILING,
CHILLED &
SPARKLING**



G5 BCS Home
Command Centre
333 H x 395 W x 487 D

SOLD SEPARATELY

	<p>2330332</p>	<p>*CO₂ Gas Cartridge (2 Per Pack)</p>
	<p>2330347</p>	<p>*CO₂ Regulator</p>

OPTIONAL BOILING HYDROTAP ACCESSORIES



2610039
Boiling Water Booster Upgrade
Booster Upgrade 40 cups/hour

**2990089****CLASSIC PLUS BCS60 G5 CHROME****Optional Accessories****2330810**Raised Font Kit
- Chrome**2330200**Classic Font Kit
- Chrome**2330304**Tap Extension
- Chrome**2990091****CLASSIC PLUS BCS60 G5
MATT BLACK****Optional Accessories****2330811**Raised Font Kit
- Matt Black**2330435**Classic Font Kit
- Matt Black**2330506**Tap Extension
- Matt Black

Commercial Range

UP TO 60 PEOPLE



BOILING & CHILLED

G5 BC Home
Command Centre
333 H x 395 W x 487 D



OPTIONAL BOILING HYDROTAP ACCESSORIES



2610039

Boiling Water Booster Upgrade
Booster Upgrade 40 cups/hour

**2990083****CLASSIC PLUS BC60 G5 CHROME****Optional Accessories****2330810**Raised Font Kit
- Chrome**2330200**Classic Font Kit
- Chrome**2330304**Tap Extension
- Chrome**2990085****CLASSIC PLUS BC60 G5
MATT BLACK****Optional Accessories****2330811**Raised Font Kit
- Matt Black**2330435**Classic Font Kit
- Matt Black**2330506**Tap Extension
- Matt Black

Commercial Range

UP TO 60 PEOPLE



BOILING & AMBIENT



G5 BA Home
Command Centre
333 H x 280 W x 313 D

OPTIONAL BOILING HYDROTAP ACCESSORIES



2610039

Boiling Water Booster Upgrade
Booster Upgrade 40 cups/hour

**2990094****CLASSIC PLUS BA60 G5 CHROME****Optional Accessories****2330810**Raised Font Kit
- Chrome**2330200**Classic Font Kit
- Chrome**2330304**Tap Extension
- Chrome**2990095****CLASSIC PLUS BA60 G5
MATT BLACK****Optional Accessories****2330811**Raised Font Kit
- Matt Black**2330435**Classic Font Kit
- Matt Black**2330506**Tap Extension
- Matt Black



ZIP HYDROBOIL PLUS

- The most energy-efficient electronically controlled instant boiling water system yet.

2 Year
Warranty



**Instant Boiling
Water on Tap!**

Zip HydroBoil Plus saves energy in 5 ways:



1. Power-Pulse™ technology cuts standby power consumption dramatically. Cuts back to micro-pulse power during periods of light usage, or when unused.



2. Sleep-mode feature can be set to activate after 2 or 4 hours of non-use.



3. Sleep-when-it-is-dark feature can be set to activate whenever lights go off.



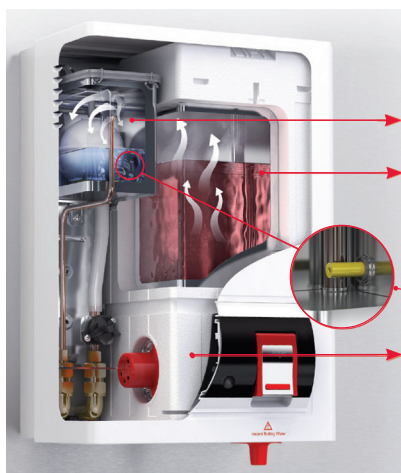
4. Programmable 24/7 on/off power clock can disconnect power twice each day.



5. Patented steam-heat-boost system recycles steam to preheat incoming water.

Features

- Large capacity on-wall instant boiling water system.
- Built-in patented technology for increased energy-efficiency.
- Patented twin-chamber technology separates incoming cold water from boiling.
- Patented steam-heat-boost technology pre-heats incoming cold water.
- Two-way, cool-to-touch tap for easy and safe dispensing of boiling water.
- Push forward for filling cups, pull back to 'lock on' to fill pots hands-free.
- Dual-port internal water tank access for easy servicing.
- Suitable for all water areas, with stainless steel boiling tank.



Patented twin chamber technology.

Stores incoming cold water separately from boiling water.

Patented steam-heat-boost system.

Recycles energy from steam to pre-heat incoming cold water.

Patented Teflon™ metering tube.

Regulates water inflow so boiling at set temperature.

Moulded high temperature insulation.

Superior heat retention performance minimizes boiling water heat loss.

Description

- Large capacity instant boiling water heater.
- Patented twin-chamber technology separates incoming mains water from boiling tank so boiling water temperature is not compromised.
- Patented steam-heat-boost feature preheats mains water in the cistern prior to entry into boiling tank.
- Designed to maintain water within 1°C of boiling set point. Factory set to 98°C.
- Internal condensing system retains steam within the heater minimising energy loss.
- Classic two-way tap control for precision filling of cups. Lifting tap locks ON for filling pots.
- Stainless steel boiling chamber with service access ports on top and bottom.
- Temperature control automatically cuts off the power in the event of temperature control failure or boil dry situation.

PRODUCT CODE	2610290	2610291
DESCRIPTION	3L HydroBoil Plus White	7.5L HydroBoil Plus White
DIMENSIONS WxDxH (mm)	289 X 180 X 431	318 X 198 X 578
MAXIMUM CUPS AT ANY ONE TIME	15 - 18	45 - 50
APPROX. RECOVERY RATE PER MINUTE	1.5 Cups	2.5 Cups
ELEMENT RATING kW	1.5	2.4
PHASE V	Single 220/240V	Single 220/240V

IN-LINE FILTER KITS AND REPLACEMENT CARTRIDGES

PRODUCT CODE	DESCRIPTION
2330727	Universal Pre-Filter Kit (excludes filter)
2330728	Pre-Filter Filter
2330704	Universal In-Line Filter Kit (excludes filter)
1330195	4C ² (Filter Only)
2330493	MH ² (Filter Only)



Safety lock can be activated to require adult finger-and-thumb operation.



Display screen signals when each filter change is due - no missed filter changes (filter optional).



Outlet is positioned at base, closer to sink level - for better view, better control.



ZIP HYDROBOIL

INSTANT BOILING WATER ON TAP!

HYDROBOIL

Features

- Instant boiling water for tea, coffee, and cooking .
- Designed to operate within 3°C of boiling point with thermal temperature control.
- New energy conserving “Cool Touch” tap provides fingertip control, reduces heat loss and saves energy.
- Two-way tap control for precision filling of cups, locks on for filling pots.
- Fully automatic.
- Steam free.
- Optional filtration systems.
- Choice of brushed Stainless Steel or White Powder Coated.
- Able to deliver between 12 to 300 cups of boiling water at one time depending on choice of model.
- Peak demand-loading is reduced considerably in comparison to traditional kettles and urns.
- Concealed plumbing and electrical connections.

Description

- Twin chamber instant boiling water heater.
- Capacity: 2.5, 5, 7.5, 10, 15, 25, 50 litres.
- Thermal thermostat.
- Available in Stainless Steel or corrosion resistant White Epoxy Powder Coated Steel.
- Thermal cut-out to protect against over-boiling and complications occurred during water supply interruption.

SAVES TIME!

The HydroBoil provides instant boiling water 24 hours a day.

SAVES ENERGY!

Two-way tap control for a cup full or a teapot full at a time.

HYGIENIC!

Concealed cistern, ensuring the ultimate in hygiene and protecting cupboards from steam damage.

SAVES SPACE!

Eliminates the need for kettles, urns and exposed power leads.



Patented steam heat boost system.
Recycles energy from steam to pre-heat incoming cold water.

Patented twin chamber technology.
Stores incoming cold water separately from boiling water.

High temperature insulation.
Superior heat retention performance minimises heat loss.

PRODUCT CODE MATT BLACK	DESCRIPTION	DIMENSIONS WxDxH (mm)
2610385	2.5 litre HydroBoil Matt Black	263 x 174 x 350
2610378	5 litre HydroBoil Matt Black	313 x 174 x 460
2610379	7.5 litre HydroBoil Matt Black	323 x 188 x 460
2610380	10 litre HydroBoil Matt Black	355 x 193 x 522

PRODUCT CODE WHITE EPOXY	PRODUCT CODE STAINLESS STEEL	DESCRIPTION	DIMENSIONS WxDxH (mm)
2610006	2610007	2.5 litre HydroBoil	263 x 174 x 350
2610008	2610009	5 litre HydroBoil	313 x 174 x 460
2610010	2610011	7.5 litre HydroBoil	323 x 188 x 460
2610012	2610013	10 litre HydroBoil	355 x 193 x 522
2610014	2610015	15 litre HydroBoil	375 x 265 x 520
2610016	2610017	25 litre HydroBoil (2Taps)*	512 x 265 x 520
2610018	2610019	50 litre HydroBoil (2Taps)*	855 x 280 x 590

IN-LINE FILTER KITS AND REPLACEMENT CARTRIDGES

PRODUCT CODE	DESCRIPTION
2330727	Universal Pre-Filter Kit (excludes filter)
2330728	Pre-Filter Filter
2330704	Universal In-Line Filter Kit (excludes filter)
1330195	4C ² (Filter Only)
2330493	MH ² (Filter Only)



MAXIMUM CUPS AT ANY ONE TIME	APPROX. RECOVERY RATE PER MINUTE	ELEMENT RATING kW	POWER SUPPLY
12 - 15	1 Cup	1.5	Single 220/230V
25 - 30	1 Cup	1.5	Single 220/230V
36 - 45	1 Cup	1.5	Single 220/230V
50 - 60	1.5 Cups	2.4	Single 220/230V

MAXIMUM CUPS AT ANY ONE TIME	APPROX. RECOVERY RATE PER MINUTE	ELEMENT RATING kW	POWER SUPPLY
12 - 15	1 Cup	1.5	Single 220/230V
25 - 30	1 Cup	1.5	Single 220/230V
36 - 45	1 Cup	1.5	Single 220/230V
50 - 60	1.5 Cups	2.4	Single 220/230V
75 - 90	2 Cups	2.4	Single 220/230V
120 - 150	3 Cups	3.0	Single 220/230V
250 - 300	6 Cups	1 x 7.2	Three Phase 380/230V



"COOL TOUCH" HANDLE

New energy conserving "Cool Touch" handle provides fingertip control, reduces heat loss and saves energy.



POT FILLING

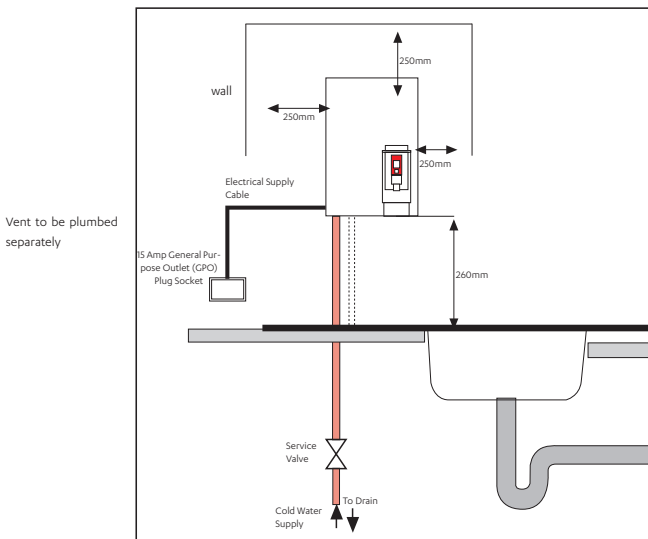
By pressing the tap backwards, it locks into place supplying a continuous flow of boiling water for filling pots.



CUP FILLING

Pulling and holding the tap forward allows you to control precision filling of cups.

ZIP HYDROBOIL PLUS & HYDROBOIL INSTALLATION



Refer to the Installation Guide for details (included with the product)

Location

To be installed over a sink draining board or a bench top equipped with a portable or plumbed drip tray. Tap outlet clearance to sink 260 mm unless pot filling requires greater access. Minimum service access clearance of 250 mm above, 250 mm to left, 250 mm to right. The vent within the case must discharge to a safe visible position as, under certain conditions, the vent may discharge cold or boiling water, and/or steam.

Electrical

To be connected in accordance with the current South African wiring regulations. The 2.5 to 25 liter models to be connected to a 15 Amp GPO, 220-240V, 50Hz power supply within 1500mm of the system. The 50 liter model must be connected to a 380Volt, 3 phases, 50 Hz electrical connection with a separate isolator. The switch must provide all –poles disconnection with contact separation of at least 3mm. For concealed electrical connections, connect cable from the rear directly to internal terminal block.

Plumbing

To be installed by a qualified plumber in accordance with manufacturer's instructions and South African plumbing regulations. Designed for direct connection to a potable cold water supply with minimum pressure of 70 kPa; maximum 600 kPa. If static pressure exceeds 600 kPa, a pressure reducing valve must be fitted. An isolating valve should be installed between the water supply and the system.

Maintenance in hard-water areas

In areas where hard water may occur, such as in the eastern and southern coastal regions of South Africa, the product lifespan could be reduced due to build-up of scale. Regular de-scaling should be carried out by a Zip service provider every 6 to 12 months depending on the severity of the conditions. Contact the Franke call centre at 031 001 5000 for assistance.

Scan this QR code to view the installation instructions on YouTube

How to use the QR Code:



1. Click on the QR Code icon to open the application on your tablet.
2. Place your tablet's camera over the QR code so it fits on your screen
3. Your tablet will 'decode' and the content will be displayed on the screen.

OPTIONAL EXTRA: ZIP TUNDISH

The Tundish is the ideal solution to prevent bacteria from growing and entering your drinking water.

Installing a Tundish on your vent system creates an "Air Gap" which effectively breaks the link between the Hydroboil and the overflow waste. It is ideal for hidden plumbing and still offers a visible inspection if there is an overflow from the unit.

With two options available: either wall mounting or sink mounting, there is a solution available to suite your requirements.

IMAGE	CODE	DESCRIPTION
	2330583	Zip Tundish - wall mounted
	2330584	Zip Tundish - sink mounted
	2120112	Drip Tray - SK3
	2120113	Drip Tray - SK5
	2120114	Brackets - SK3
	2120115	Brackets - SK5

ZIP CHILLTAP

Instant Chilled Drinking Water

(Optional Filtration Kit)



FEATURES & DESCRIPTION

- Provides instant access to chilled drinking water.
- Delivers water at a consistent temperature between 5°C and 10°C.
- Produces up to 140 glasses of chilled water per hour.
- Cost-effective alternative to purchasing and storing bottled water.
- Under-counter design keeps the chiller system discreetly out of sight.
- Chrome-plated brass tap with quarter-turn lever and 360° swivel spout.
- Vented system protects against pressure surges, maintaining system integrity.
- Air-cooled condenser with a reliable compressor rated up to 0.25 HP.

CHILLTAP (UNDERCOUNTER UNITS)

PRODUCT CODE	DESCRIPTION	UNIT DIMENSIONS WxDxH (mm)	CHILLED GLASSES
2610027	ChillTap *	350 x 350 x 410	42L

* Includes Carafe Spout

IN-LINE FILTER KITS AND REPLACEMENT CARTRIDGES

PRODUCT CODE	DESCRIPTION
2330727	Universal Pre-Filter Kit (excludes filter)
2330728	Pre-Filter Filter
2330704	Universal In-Line Filter Kit (excludes filter)
1330195	4C ² (Filter Only)
2330493	MH ² (Filter Only)

ZIP CHILLMASTER & ECONOMASTER

Plumbed, Chilled Drinking Water Instantly

Whether it be a gym, canteen or factory, the range of chillers and water fountains by Zip are the only option in chilled, filtered** water for staff or public access.



UPRIGHT WATER CHILLER – KEY SPECIFICATIONS

Plumbing:	Direct connection to cold water supply with lever-action carafe filler and push-action bubbler.
Cooling Capacity:	Delivers up to 140 glasses per hour at temperatures below 11°C. Power Rating: 0.3 kW.
Compressor:	Hermetically sealed, reciprocating type rated at 0.25 HP, 220V, AC 50Hz, single phase.
Condenser:	Fan-cooled, copper with aluminium fins.
Evaporator:	Sealed copper tank (1.8-litre capacity), cooled by an internal copper coil.
Refrigerant:	R134a, with capillary tube control system (no moving parts).
Thermostat:	Enclosed, factory preset; accessible via front panel removal.
Carafe Filler:	Chrome-plated brass tap with lever action and swivel head.
Bubbler:	Push-button operation.
Filtration:	Triple-action, fully encapsulated, carbon-activated filter (available on Chillmaster model only).
Electrical:	2-metre insulated power cable with 15-amp, three-prong moulded plug.
Top Surface:	Satin-finish 304 stainless steel.
Base:	1.2 mm heavy gauge galvanised steel.

CASING OPTIONS:

Chillmaster:	Brushed stainless steel outer case with front access panel.
Economaster:	White epoxy-coated outer case with front access panel.

CHILLERS

PRODUCT CODE	DESCRIPTION	FINISH	DIMENSIONS WxDxH (mm)	CAPACITY/HOUR
2610026	Chillmaster ** (with filter)	Stainless Steel	346 x 346 x 905	42L
2610025	Chillmaster (no filter)	Stainless Steel	346 x 346 x 905	42L
2610028	Economaster	White Epoxy Coated	346 x 346 x 905	42L
2610025-001	Chillmaster - Foot Operated (no filter) (Stainless Steel)	Stainless Steel	346 x 346 x 905	42L

CHILLER FILTRATION

PRODUCT CODE	DESCRIPTION
2330842	Filter Replacement Kit Includes - Filter Head and Filter 0.2 Micro Filter
2330473	Filter cartridge for chillmaster Micropurity 0.2 micron filter - 6,813 litres

KEY FEATURES

- Designed for commercial use, ideal for staff or public hydration areas.
- Provides a convenient and effective solution for delivering chilled, filtered water on demand.
- Dispenses up to 42 litres of hygienic water per hour at temperatures below 11°C.
- Plumbed directly to both the cold water supply and waste outlet for continuous operation.
- Water is dispensed via both a bubbler and a carafe spout, catering to different user needs.
- Built with a heavy-duty, easy-to-clean stainless steel bowl and outer casing:
- Chillmaster: Brushed stainless steel finish
- Economaster: White epoxy-coated finish
- Filter change reminder light alerts users when it's time to replace the cartridge (Chillmaster with filter only).
- Quick and hygienic filter replacement—as easy as changing a light bulb (Chillmaster with filter only).

FOOT OPERATED CHILLMASTER

Plumbed, Chilled Drinking Water Instantly

Whether it be a gym, canteen or factory, the range of chillers and water fountains by Zip are the only option in chilled, filtered** water for staff or public access.

CHILLERS

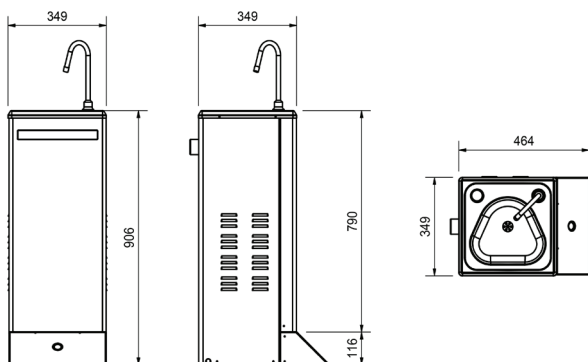
PRODUCT CODE	DESCRIPTION	FINISH	DIMENSIONS WxDxH (mm)	CAPACITY/HOUR
2610025-001	Foot operated Chillmaster (no filter)	Stainless Steel	346 x 346 x 905	42L

CHILLER FILTRATION

PRODUCT CODE	DESCRIPTION
2330842	Filter Replacement Kit Includes - Filter Head and Filter 0.2 Micro Filter
2330473	Filter cartridge for chillmaster Micropurity 0.2 micron filter - 6,813 litres

Features

- For commercial use.
- The effective way to put chilled filtered** water on tap for staff or public access.
- Delivers hygienic water at a rate of 42 litres per hour at less than 11°C
- Plumbed directly to the cold water connection and to waste.
- Water dispersed by bubbler and carafe spout.
- Heavy duty, easy to-clean Stainless Steel bowl and Stainless Steel case (Chillmaster) or White Epoxy Coated (Economaster).
- Filter change reminder lights signals when filter cartridge replacement is due (Chillmaster with filter only).
- Filter cartridges are as quick, simple and hygienic to change as a light bulb (Chillmaster with filter only).







ZIP FILTRATION

UNIVERSAL PRE-FILTER & IN-LINE FILTER KIT

4C²

- 0,2 Micron Filter
- Drinking Water
- Water Coolers
- Rated capacity 11 350L
- Dimensions: 36.2cm x 8.26cm



MH²

- 0,2 Micron Filter
- High -flow, higher volume brewers
- Rated capacity 34 068L
- Dimensions: 52.7cm x 8.3cm



INSTALLATION TIPS

- Install vertically with cartridge hanging down.
- Flush system by running water through filter for 3 minutes at full flow.
- Change cartridge on a regular 6 month preventative maintenance program.
- Service flow must not exceed 0.5 gpm (1.9 Lpm)
- Allow for 6.35cm clearance below cartridge for easy cartridge replacement.

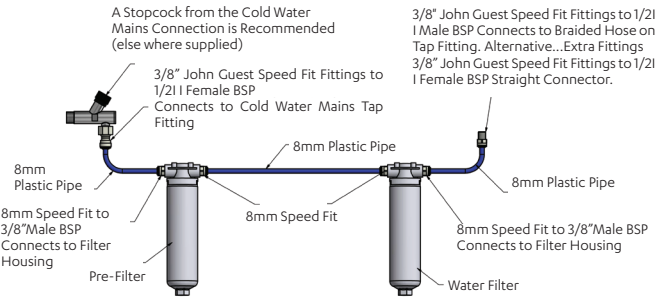
FEATURES AND BENEFITS

- Provides clear, fresh, premium quality ingredient water for consistently great tasting coffee and beverages
- Sanitary cartridge replacement is simple, quick and clean; internal filter parts are never exposed to handling or contamination
- Our unique filter blend using activated carbon reduces chlorine taste & odor and other offensive contaminants
- Proprietary Micro-Pure® II filtration media effectively inhibits the growth of bacteria on the filter media that can decrease product life. NSF/ANSI Standard 53 certified to reduce cysts such as Cryptosporidium and Giardia by mechanical means.

IN-LINE FILTER KITS AND REPLACEMENT CARTRIDGES

PRODUCT CODE	DESCRIPTION
2330727	Universal Pre-Filter Kit (excludes filter)
2330728	Pre-Filter Filter
2330704	Universal In-Line Filter Kit (excludes filter)
1330213	Ambient DIY Filter Kit (Carafe spout sold separately)
1330195	4C ² (Filter Only)
2330493	MH ² (Filter Only)

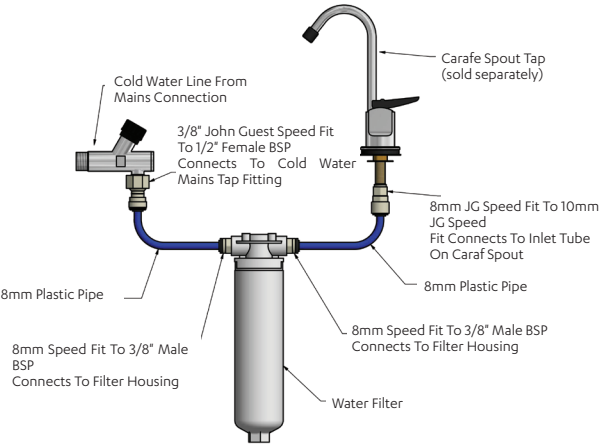
UNIVERSAL PRE-FILTER & IN-LINE FILTER KIT



PRODUCT CODE	DESCRIPTION
2330727	Universal Pre-Filter Kit (excludes filter)
2330728	Pre-Filter Filter
2330704	Universal In-Line Filter Kit (excludes filter)
1330195	4C ² (Filter Only)
2330493	MH ² (Filter Only)

AMBIENT DIY FILTER KIT WITH SPOUT

(CARAFE SPOUT SOLD SEPARATELY)



PRODUCT CODE	DESCRIPTION
1330213	Ambient DIY Filter Kit (Carafe spout sold separately)
2330287	Carafe Spout (sold separately)

IMPORTANT SAFETY NOTICE

PLEASE READ CAREFULLY. CALL THE FRANKE CALL CENTRE AT 031 001 5000 IF IN DOUBT OR IF YOU NEED ASSISTANCE.

Your Zip is designed to produce boiling water. Remember that boiling water is dangerous so follow the important instructions in these guidelines to avoid accidents.

Use a competent plumber to install your ZIP product

In terms of Government notice No.R.1875 of 31 August 1979, no person shall perform the trade of plumbing unless he is a trained plumber or works under the adequate control of a trained plumber or approved competent person.

Where to find a competent plumber

The Plumbing Industry Registration Board (PIRB) controls plumbing practices and registered plumbers can be found on their website www.pirb.co.za.

Maintenance in hard-water areas

In areas where hard water may occur, such as in the eastern and southern coastal regions of South Africa, the product lifespan could be reduced due to build-up of scale. Regular de-scaling should be carried out by a Zip service provider every 6 to 12 months depending on the severity of the conditions. Contact the Franke call centre at 031 001 5000 for assistance.

NOTE: If water is not of a potable quality the warranty may be void.

Operating your ZIP

Every Zip product is supplied with a user manual which contains instructions for the installation of the Zip Product, its use and maintenance, as well as warnings relating to the risk of injury or damage that could arise from its use. The installation must be carried out in accordance with the instruction manual. The user manuals can also be downloaded from the Zip website www.zipsa.co.za.

Product Warranty and the Consumer Protection Act

Franke South Africa warrants the product to be of good quality, in good working order and free from all defects for a period of 1 year from the date of delivery within the regions of South Africa, Namibia and Botswana. Franke's liability in terms of the warranty is limited to either repairing or replacing the damaged or defective Zip product. This warranty is given in addition to any warranty that may apply in terms of the Consumer Protection Act, 2000.

Standard Terms and Conditions

Details of the standard conditions of sale that apply to the sale of all Zip products in South Africa, Namibia and Botswana, unless otherwise agreed by Franke South Africa can be obtained from the Zip website www.zipsa.co.za.

Installation Videos:

How to install your ZIP Hydrotap command centre



HydroTap G5 command centre installation
Residential BCS Boiling, Chilled & Sparkling

HydroTap G5 command centre installation
Residential BC Boiling & Chilled



HydroTap G5 command centre installation
Commercial BCS60 Boiling, Chilled & Sparkling

HydroTap G5 command centre installation
Commercial BC60 Boiling & Chilled



HydroTap G5 command centre installation
Commercial BA60 Boiling & Ambient



ZIP | PURE TASTING | INSTANT | **BOILING** | **CHILLED** | **SPARKLING**

THE WORLD'S MOST ADVANCED DRINKING WATER APPLIANCES

Zip products are exclusively manufactured/distributed by

Franke South Africa

Tel: (+27-31) 001 5000

International Callers dial (+27 31) 450 6470

Website: www.zipsa.co.za

CALL CENTRE

TEL: (+27-31) 001 5000

e-mail: HS-enquiry-fsa.za@franke.com

DURBAN FACTORY

1194 South Coast Road,

Mobeni, Durban, 4092.

P.O. Box 72395, Mobeni,

Durban, 4060,

South Africa.

TEL: (+27-31) 450 6300

GAUTENG SALES OFFICE

82 Morkels Close,

Unit B, Capital Hill

Halfway House

Midrand, 1685

South Africa

CAPE TOWN SALES OFFICE

9 Silver Street,

Northgate Business Park,

Northgate Estate,

Cape Town, 7405

South Africa.

Disclaimer

The information and data supplied in this brochure is based on information believed to be reliable, however it is not binding and inaccuracies may occur. Franke reserves the right to change Specification and design at any time without notice.

© 2025 by Franke South Africa. All rights reserved under the Copyright Act of 1987 with amendments. Reproduction of any of the content, full or partial, is allowed only with the prior written approval of Franke South Africa. No reasonable requests will be refused provided conditions as laid out are met.

Terms & Conditions Apply

(These terms and conditions may be viewed on www.zipsa.co.za)

FSA1125

If you are an existing ZIP Hydrotap owner, please scan this QR code to register your product.



Zip SCAN to register
your HydroTap