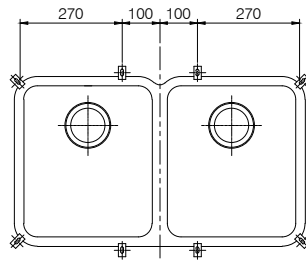
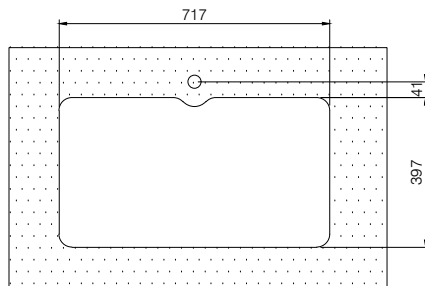


717

Posizionamento squadrette consigliate  
Recommended fixing clamps position  
Position des pattees de fixation  
Posicion grapas  
Angeraten positionierung der Befestigungsklammern



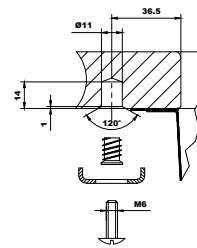
Dima per foratura top  
Template top cut-out  
Gabarit de decoupe  
Schablone fur Ausschnitt  
Plantilla de corte



Dimensione foratura top  
Cut-out sizes  
Dimensions de la decoupe  
Ausschnittmae

## ANX-120

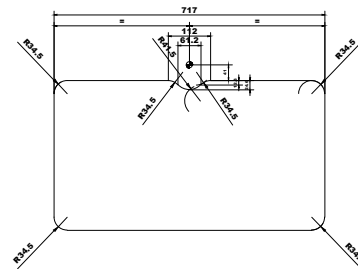
Schema di fissaggio  
Fixing details  
Schema de fixation  
Detaille de fixation  
Befestigungsschablone



stucco  
sealing past  
stuc  
pasta de sellado  
Abdichtungsmaterial

Bordo vasca  
Basin rim  
Bordure de la cuve  
Puffri cubeta  
Beckenrand

Si raccomanda sigillatura con silicone  
Silicone recommended  
Assure l'etancheite au silicone  
Silicona  
Silikonabdichtung ist empfehlenswert



cod. 993.0536.374  
(vedere pag. 13)  
76 12885 13061.3

397

Mod.	Rev.	Descrizione	Volume	Figura	Scale	Unit.
					1:1	
Dima di foratura per bacino						
ANX 120						
L.P.						
30.01.18						
993.0536.374						