



FRANKE

BUILDING EXCELLENCE

**Quality Products for
New Development**

YOUR NEXT PROJECT STARTS HERE

CONTENTS

- 01 Designed to meet your every requirement
- 02 From towers to townhomes
- 04 Brilliance for a lifetime
- 06 Franke Cube Sinks
- 10 EZ Torque™ saves time on the job
- 12 Kindred Brookmore Sinks
- 16 Kindred Creemore Sinks
- 18 Hard working Franke Fraganite
- 20 Maris Fraganite
- 24 Franke EOS Neo Faucets
- 26 Franke Maris Lario Faucets
- 28 Waste Disposers
- 30 Commercial solutions for every space
- 32 Franke Commercial Utility
- 34 Franke Commercial Stainless Sinks
- 36 Sustainability: A vision for a healthier future
- 38 Contact Us

Designed to meet your every requirement

At Franke, we have been looking for new solutions and innovations for over 100 years and our attitude still has not changed. In 1911 we combined traditional craftsmanship, precision engineering, and a constant pursuit of innovation, three principles that remain at our core.

Design

Products that differentiate. From affordable, practical designs suitable for high-volume housing, to distinctive designs that add ideal finishing touches to high end developments.



Quality

Continuous improvement to our products and processes keeps us striving for excellence. Franke proudly stands behind every product we make.



Manufacturing

Franke has been manufacturing stainless steel sinks for over 100 years and granite sinks for 35 years. Our superior buying power and control over manufacturing enables supply of products in a timely manner.

Service

Questions about our product? Our North American customer service team is ready to assist Monday to Friday.



Call Us



Email Us

From towers to townhomes

Take your project to the next level with a sink for every space from Franke, Kindred, and Franke Commercial. Practical, affordable designs suitable for multi-unit towers as well as innovative, distinctive designs for that upscale finishing touch for high-end developments.

Trust both Franke and Kindred to supply an extensive range of sinks, faucets, and waste management solutions to match your every requirement for any commercial or residential project.



Timeless, durable, hardwearing solutions

Stainless steel and granite sinks for hard-working home kitchens.

Faucet collections in timeless finishes that withstand daily use for years to come.

Commercial sinks and basins for hand hygiene outside the condo or apartment unit.



Brilliance for a lifetime

Stainless steel represents our ideal kitchen. The sheer quality of Franke products can be seen and felt. Strong and robust, it maintains its brilliance over time, making it the defining feature of the living spaces in which it is installed.

Its superb technical features ensure that it is always in demand and highly appreciated by professionals in the haute cuisine sector.

Stainless Steel is an extremely hygienic material, is easy-to-clean and recyclable.



SCAN THE QR CODE TO SEE HOW OUR STAINLESS STEEL SINKS ARE MADE.



Quality in shining armor

A fully recyclable material, stainless steel is a sustainable choice.

Durable, resilient finishes that will stand up to heavy everyday use.

Made from premium quality chrome nickel steel, highly resistant to staining, rust and corrosion.



Cube



Design and functionality

An elevated kitchen experience made possible by Swiss precision. Our Cube sinks redefine sophistication with a smooth bowl design, providing a modern aesthetic. Complement any kitchen décor with the visual appeal of this endlessly stylish sink.

Sized right for any kitchen

A popular choice at an attractive price point, representing excellent value.

Elevated design

Undermount design with a minimal 12mm corner radius.

Pearl finish

A durable, resilient finish that will stand up to heavy everyday use.



Give an exceptional sink experience



Cube Undermount



CUX11015

Exterior Dimensions: 16½" x 17¾"
Depth: 9"
Minimum Cabinet Size: 21"



CUX11019

Exterior Dimensions: 19⅞" x 17¾"
Depth: 9"
Minimum Cabinet Size: 24"



CUX11020

Exterior Dimensions: 21⅞" x 17¾"
Depth: 9"
Minimum Cabinet Size: 24"



CUX11021

Exterior Dimensions: 22¾" x 17¾"
Depth: 9"
Minimum Cabinet Size: 27"



CUX11023

Exterior Dimensions: 24⅞" x 17⅞"
Depth: 9"
Minimum Cabinet Size: 30"



CUX11025

Exterior Dimensions: 26⅝" x 17¾"
Depth: 9"
Minimum Cabinet Size: 30"



CUX11027

Exterior Dimensions: 28½" x 17¾"
Depth: 9"
Minimum Cabinet Size: 33"



CUX11030

Exterior Dimensions: 31½" x 17¾"
Depth: 9"
Minimum Cabinet Size: 36"



CUX16024

Exterior Dimensions: 25⅞" x 17¾"
Depth: 9"
Minimum Cabinet Size: 30"



CUX160

Exterior Dimensions: 31⅞" x 17¾"
Depth: 9"
Minimum Cabinet Size: 36"



CUX120

Exterior Dimensions: 31⅞" x 17¾"
Depth: 9"
Minimum Cabinet Size: 36"



CUX16032

Exterior Dimensions: 32⅞" x 17¾"
Depth: 9"
Minimum Cabinet Size: 36"

ADA - Accessible Undermount



CUX11021-ADA

Exterior Dimensions: 22¾" x 17¾"
Depth: 5"
Minimum Cabinet Size: 27"



CUX11027-ADA

Exterior Dimensions: 28½" x 17¾"
Depth: 5"
Minimum Cabinet Size: 33"

Saves time on the job



Eliminate complicated, frustrating, and time-consuming traditional sink installation with Kindred's EZ Torque™ installation system, available on select Kindred topmount sink models.

Our revolutionary installation system is quick and easy for a plumber or installer to use. Simply drop and drill the sink into place, securely locking it to the countertop. Faster sink installation saves time and effort on the job site.



EZ Torque™ Means Hassle-Free Installation



Drop sink into
the countertop.



Tighten fasteners
to secure in place.



Brookmore Collection



Made to work Made to last

The kitchen is the heart of the home, and the sink is the beating heart of the kitchen. Kindred stainless steel sinks are a beautiful choice for long-term beauty and reliability. Brookmore topmount and undermount sinks give a streamlined look that withstand everyday use, guaranteed to keep their enduring beauty for years to come.



Spacious 9" deep bowl

High capacity sink perfect for soaking and washing stacks of dishes.



High quality stainless

18 gauge high quality stainless steel with exceptional resistance to staining and corrosion.



Rear & offset drains

The placement of the drain has been designed to maximize bowl space.



EZ Torque installation

Simplified fastener system and drop-and-drill process make this one of the industry's quickest sinks to install. Available on topmount models.





 **KINDRED**

Brookmore Collection Undermount Stainless Steel Sinks



BSU1825-9N
Single bowl undermount sink



BCU1835-9N
Combination bowl undermount sink

MODEL	BOWL CONFIG.	CABINET SIZE	EXTERIOR FRONT-TO-BACK	EXTERIOR LEFT-TO-RIGHT	DEPTH
BSU1812-8N	Single	18"	18 1/8"	11 9/16"	7 7/8"
BSU1816-9N	Single	21"	18 1/8"	15 9/16"	9"
BSU1820-9N	Single	24"	18 1/8"	19 1/2"	9"
BSU1825-9N	Single	30"	18 1/8"	24 5/8"	9"
BSU1831-9N	Single	36"	18 1/8"	30 1/2"	9"
BSU1832-9N	Single	36"	18 1/8"	32 1/2"	9"
BSU1832-9N-OW	Single	36"	18 1/8"	32 1/2"	9"
BCU1827R-9N	Double	30"	18 1/8"	26 9/16"	9"
BCU1831R-9N	Double	36"	18 1/8"	30 1/2"	9" & 7 7/8"
BCU1835R-9N	Double	39"	18 1/8"	34 1/2"	9"
BCU1836R-9N	Double	39"	18 1/8"	35 9/16"	9" & 7 7/8"
BTU1841-9N	Triple	45"	18 1/8"	41 1/2"	9" & 7 7/8"



Brookmore Collection Topmount / Drop In Stainless Steel Sinks with EZ Torque



BSL2233-9-1N
Single bowl topmount sink with 1 faucet hole



BDL2233-9-1N
Double bowl topmount sink with 1 faucet hole

MODEL	BOWL CONFIG.	CABINET SIZE	EXTERIOR FRONT-TO-BACK	EXTERIOR LEFT-TO-RIGHT	DEPTH
BSL2116-9-1N	Single	18"	20 7/8"	15 15/16"	9"
BSL2120-9-1N	Single	24"	20 7/8"	19 15/16"	9"
BSL2125-9-1N	Single	27"	20 7/8"	25"	9"
BSL2131-9-1N	Single	33"	20 7/8"	30 7/8"	9"
BSL2225-9-1N	Single	27"	22"	25"	9"
BSL2233-9-1N	Single	36"	22"	32 7/8"	9"
BSL2233-ADA-1N	Single	36"	22"	32 7/8"	5 3/8"
BCL2127R-9-1N	Combination	30"	20 7/8"	26 15/16"	9" & 7 7/8"
BCL2131R-9-1N	Combination	33"	20 7/8"	30 7/8"	9" & 7 7/8"
BDL2131-9-1N	Double	33"	20 7/8"	30 7/8"	9"
BDL2233-9-1N	Double	36"	22"	32 7/8"	9"
ADA MODELS					
BSL2225-ADA-1N	Single	27"	22"	25"	5 3/8"
BSL2233-ADA-1N	Single	36"	22"	32 7/8"	5 3/8"

Brookmore topmount / drop in sinks are offered in 1, 3, and 4 faucet hole drillings. BSL2116-9N the exception.

Creemore Collection



CLICK HERE FOR THE ENTIRE CREEMORE COLLECTION



EZ Torque installation

Simple installation in two easy steps: just drop-and-drill. One of the industry's fastest sinks to install. Available on select models.



Ultra quiet

Sound dampening system that keeps your kitchen clear of excess noise from running water and disposal vibration.



Spacious bowl capacity

Greater capacity sink than traditional tapered bowls.



Creemore Collection Topmount/Drop In Stainless Steel Sinks



CSLA2522-8-4CBN
Single bowl topmount sink with 4 faucet holes



CDLA3322-8-4N
Double bowl topmount sink with 4 faucet holes


MODEL	BOWL CONFIG.	CABINET SIZE	EXTERIOR FRONT-TO-BACK	EXTERIOR LEFT-TO-RIGHT	DEPTH	EZ TORQUE	FAUCET HOLE OPTIONS
CSLA1515-6-2CBN	Single	18"	15"	15"	6"	Yes	2-hole only
CSLA2522-6-1N	Single	27"	22"	25"	6"		1, 3, and 4-hole
CSLA2522-7-1N	Single	27"	22"	25"	7"	Yes	1, 3, and 4-hole
CSLA2522-8-1CBN	Single	27"	22"	25"	8"	Yes	1, 3, and 4-hole
CDLA3322-6-1N	Double	36"	22"	33"	6"		1, 3, and 4-hole
CDLA3322-7-1N	Double	36"	22"	33"	7"	Yes	1, 3, and 4-hole
CDLA3322-8-1CBN	Double	36"	22"	33"	8"	Yes	1, 3, and 4-hole
FCDLA3322-8-1CBN	Double	36"	22"	33"	8"	Yes	1, 3, and 4-hole

Beautiful, hardwearing Fragranite

Made to last, Fragranite is a durable and beautiful choice. Right-sized for cozy apartments or spacious gallery kitchens, Maris Fragranite sinks are right at home in hard-working kitchens. What's more, we have wheelchair accessible ADA options available for a coordinated look in every home unit.



Fragranite: Pioneered by Franke, it's a unique material that is warm to the touch thanks to its up to 80% quartz sand composition.



SCAN OR CLICK TO WATCH HOW FRAGRANITE SINKS ARE MADE



Exceptionally tough

Stain-resistant to the point where even red wine won't leave a mark.

Heat-resistant to temperatures up to 536°F for the ultimate in durability.

A smooth, finely textured surface that naturally resists bacterial and microbial growth.



Maris Fragranite



Timeless, classic neutrals

Earth tones will never lose their appeal. Our Fragranite color palette ranges from calming to bold, with soft and deep, rich tones.

Beautiful, hardwearing granite

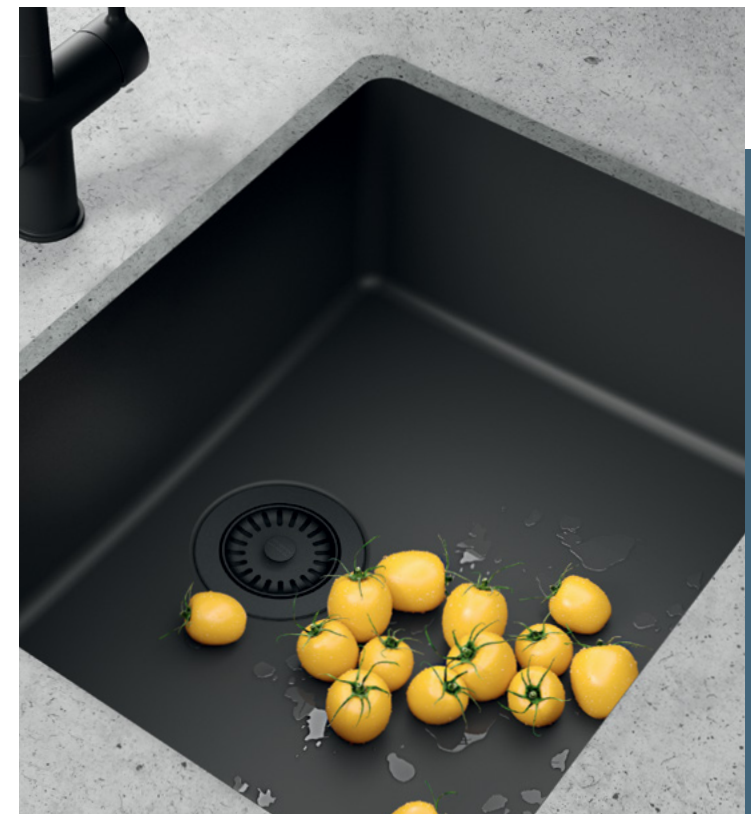
An exceptionally durable material, highly resistant to burns, dents, chips, and stains. Fragranite is a solid material all the way through: its gorgeous color will stay true for years to come.



Polar White Stone Grey Slate Grey Onyx Matte Black



Champagne Oyster Mocha



CLICK THE PRODUCT
IMAGE FOR DETAILS

Undermount



MAG11020-CHA

Exterior Dimensions: 21⁵/₁₆" x 17¹³/₁₆"
Depth: 9 1/2"
Minimum Cabinet Size: 24"
Shown in Champagne



MAG11023-ONY

Exterior Dimensions: 25" x 18¹⁵/₁₆"
Depth: 9 1/2"
Minimum Cabinet Size: 30"
Shown in Onyx



MAG11023ADA-CHA

Exterior Dimensions: 25" x 18¹⁵/₁₆"
Depth: 5"
Minimum Cabinet Size: 30"
Shown in Champagne



MAG11025-SHG

Exterior Dimensions: 27" x 19"
Depth: 9 1/2"
Minimum Cabinet Size: 30"
Shown in Stone Grey



MAG11028-PWT

Exterior Dimensions: 30" x 19"
Depth: 9 1/2"
Minimum Cabinet Size: 33"
Shown in Polar White



MAG11029-MBK

Exterior Dimensions: 31" x 17¹³/₁₆"
Depth: 9 1/2"
Minimum Cabinet Size: 36"
Shown in Matte Black



MAG11031-CHA

Exterior Dimensions: 33" x 18¹⁵/₁₆"
Depth: 9 1/2"
Minimum Cabinet Size: 36"
Shown in Champagne



MAG11031OW-OYS

Exterior Dimensions: 33" x 19⁵/₁₆"
Depth: 9 1/2"
Minimum Cabinet Size: 36"
Shown in Oyster



MAG1201414-CHA

Exterior Dimensions: 31" x 17¹³/₁₆"
Depth: 9 1/2"
Minimum Cabinet Size: 36"
Shown in Champagne



MAG1601611LD-PWT

Exterior Dimensions: 31" x 17¹³/₁₆"
Depth: 9 1/2"
Minimum Cabinet Size: 36"
Shown in Polar White



MAG1601812LD-SLG

Exterior Dimensions: 33" x 18¹⁵/₁₆"
Depth: 9 1/2"
Minimum Cabinet Size: 36"
Shown in Slate Grey



MAG1201515-MBK

Exterior Dimensions: 33" x 18¹⁵/₁₆"
Depth: 9 1/2"
Minimum Cabinet Size: 36"
Shown in Matte Black

Dual Mount



MAG61015-SHG

Exterior Dimensions: 17⁵/₁₆" x 19¹¹/₁₆"
Depth: 7 7/8"
Minimum Cabinet Size: 18"
Shown in Stone Grey



MAG61020-OYS

Exterior Dimensions: 21⁵/₈" x 20⁷/₈"
Depth: 9 1/2"
Minimum Cabinet Size: 24"
Shown in Oyster



MAG61023-OYS

Exterior Dimensions: 25" x 22"
Depth: 9 1/2"
Minimum Cabinet Size: 27"
Shown in Oyster



MAG61023ADA-MBK

Exterior Dimensions: 25" x 22"
Depth: 5"
Minimum Cabinet Size: 27"
Shown in Matte Black



Laundry Sink
MAG61023L-PWT

Exterior Dimensions: 25" x 22"
Depth: 12"
Minimum Cabinet Size: 27"
Shown in Polar White



Suitable for
laundry/utility



MAG61029-SLG

Exterior Dimensions: 31" x 20⁷/₈"
Depth: 9 1/2"
Minimum Cabinet Size: 33"
Shown in Slate Grey



MAG61031-OYS

Exterior Dimensions: 33" x 22"
Depth: 9 1/2"
Minimum Cabinet Size: 36"
Shown in Oyster



MAG61031OW-CHA

Exterior Dimensions: 33" x 22"
Depth: 9 1/2"
Minimum Cabinet Size: 36"
Shown in Champagne



Low Divide Sink
MAG6601611LD-OYS

Exterior Dimensions: 31" x 20⁷/₈"
Depth: 9 1/2"
Minimum Cabinet Size: 33"
Shown in Oyster



MAG6201515-PWT

Exterior Dimensions: 33" x 22"
Depth: 9 1/2"
Minimum Cabinet Size: 36"
Shown in Polar White



MAG6201414-ONY

Exterior Dimensions: 31" x 20⁷/₈"
Depth: 9 1/2"
Minimum Cabinet Size: 33"
Shown in Onyx



Low Divide Sink
MAG6601812LD-SHG

Exterior Dimensions: 33" x 22"
Depth: 9 1/2"
Minimum Cabinet Size: 36"
Shown in Stone Grey

Eos Neo



The perfect family faucet

With its modern, slim, seamless design, Eos Neo is available in a variety of colors and styles. Coordinate the kitchen design with a primary kitchen faucet and secondary bar for that striking, cohesive look.

Space-saving handle design
The faucet handle features a smooth 0-90 degree movement, ensuring no interference with the backsplash.

Exceptional durability
Constructed with type 304 and 316 stainless steel, our faucets are engineered to resist corrosion and staining, ensuring long-lasting performance.

Pull-down spray head
The pull-down spray head can be used with stream or a powerful spray for more efficient cleaning.



Pull-Down Kitchen Faucet EOS-PD-316
Type 316 Stainless Steel
Spout height 8 1/4"
Suitable for Outdoor Use




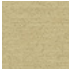
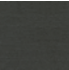
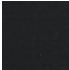
Pull-Down Kitchen Faucet EOS-PD-ANT
Shown in Anthracite
Spout height 8 1/4"
Also available in Gold, Industrial Black and Stainless Steel



Pull-Down Prep Faucet EOS-PR-IBK
Industrial Black
Spout height 6 1/4"
Also available in Stainless Steel and Gold



Bar Faucet EOS-BR-GLD
Shown in Gold
Spout height 8 1/8"
Also available in Stainless Steel and Industrial Black

	Stainless Steel		Gold
	Anthracite		Industrial Black

Maris Lario



Italian craftsmanship for everyday ease

Take kitchen design to the next level with the Maris Lario range of faucets. Seamless integration and visual harmony are achieved with perfectly matched finishes and shapes.

A complete family of faucets
Cohesive style featuring kitchen, prep, bar, pot filler, and filtration faucets.

Italian-designed, Italian-made
Choose a timeless style and reliable performance for your townhome or condo units.

Available in 3 gorgeous finishes
Gleaming polished chrome, soft satin nickel and dramatic matte black.

Maris Lario Collection



Pull-Down Kitchen Faucet
LAR-PD-SNI
Shown in Satin Nickel
Spout height 9 1/4"



Pull-Down Kitchen Prep Faucet
LAR-PR-CHR
Shown in Chrome
Spout height 7 7/8"



Bar Faucet
LAR-BR-MBK
Shown in Matte Black
Spout height 7 5/16"



Cold Filtered Faucet
LAR-FW-SNI
Shown in Satin Nickel
Spout height 7 7/8"



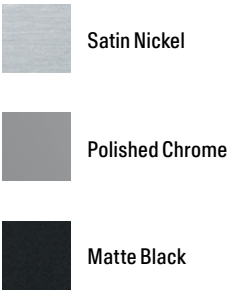
Hot Filtered Faucet
LAR-HO-CHR
Shown in Polished Chrome
Spout height 7 7/8"



Hot and Cold Filtered Faucet
LAR-HC-MBK
Shown in Matte Black
Spout height 7 7/8"



Wall Mounted Pot Filler
LAR-PF-SNI
Shown in Satin Nickel
Spout reach 19 1/16"



ADA Compliant: Product is compliant with the American Disabilities Act when properly installed. All faucets can accommodate at least 1-3/4" countertop thickness. Several can accommodate up to 3". Call for additional thicknesses. Recommended Pressure Range: 15-75 PSI. All Franke filtration faucets have been certified to comply with NSF 61/ANSI/CAN, Q ≤ 1; ASME A112.18.1/CSA B125.1; and NSF 372 drinking water system component requirements. These requirements meet California Health and Safety Code requirements for low lead as well as the low lead requirements of the US Safe Drinking Water Act. Franke faucets also meet the water efficiency requirements of the California Energy Commission and the US Department of Energy.

Waste Disposers



EXPLORE THE ELITE SLIMLINE RANGE OF WASTE DISPOSERS HERE

The Franke Elite Slimline range of food waste disposers is designed to be a daily family assistant, helping to manage food waste easily, reduce risk of germs and odors, and offer a more sustainable approach to everyday kitchen life.



A powerful performance
Twist Force technology offers exceptional grinding power, giving fast and efficient processing without jamming.

A hygiene safeguard also fights against the growth of bacteria and unpleasant odors with its antimicrobial protection.



Easy installation
Thanks to a 3-Bolt Mounting System that makes it compatible with all Franke sinks that feature a 3 1/2" waste hole, it's quick and easy to install. The elegant-shelled body is designed to save maximum space underneath the sink.

Choose from our powerful range of food waste disposers



FWDS125
1-1/4 HP Disposer



FWDS100
1 HP Disposer



FWDS75
3/4 HP Disposer



FWDS50
1/2 HP Disposer



FWDS75BF
3/4 HP Disposer

Feed type	Continuous	Continuous	Continuous	Continuous	Batch Feed
RPM	2800	2750	2700	2750	2700
Jam resistant	X	X	X	X	X
Warranty	12 Year In-Home Warranty	10 Year In-Home Warranty	8 Year In-Home Warranty	6 Year In-Home Warranty	8 Year In-Home Warranty
Magnetic rim metal guard	X	X			
Integrated air switch connection	X	X	X		

Commercial solutions for every space

Franke Commercial concentrates on intelligent fixtures for sanitary facilities in semi-public, public, and commercial facilities. Our engineers develop aesthetically attractive washroom solutions as well as innovative products for healthcare, education, industrial, and transportation.

At work, in public, as well as at home, everyone needs to wash their hands. Trust Franke Commercial sinks to make hand washing a wonderful experience.



Facility owners trust Franke

Lustrous, durable stainless steel sinks in every size and configuration. Dozens of ADA compliant models.

Specialized solutions for janitorial rooms, maintenance shops, and food preparation.

Contractors love installing Franke Commercial sinks thanks to EZ Torque fastening system. Drop and drill, so easy.



Commercial Utility Sinks



CLICK HERE FOR THE ENTIRE
T316 COLLECTION

Corrosion Resistant Type 316/316L

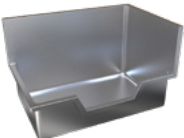
When corrosion-resistance is key, the choice is clear: specify Type 316/316L stainless steel sinks for the job. The addition of molybdenum dramatically improves stainless steel’s resistance to chlorides, salt water, and harsh chemicals. The best choice for janitorial rooms, maintenance shops, and even exterior spaces.



Mop sinks for janitorial in Type 316/316L stainless steel



FSS2210-316-1
Left & right splash with angular front



FSSOR223410-316-1
Right splash with drop front

MODEL	FRONT-BACK	LEFT-RIGHT	DEPTH	FRONT EDGE STYLE	SPLASH LOCATION	GAUGE
FSS151509-316-1	17 1/2"	17 1/2"	9 1/4"	Straight	-	16
FSS222210-316-1	24"	24"	10"	Straight	Left & right	16
FSSL223410-316-1	24"	36"	10"	Straight	Left	16
FSSR223410-316-1	24"	36"	10"	Square front	Right	16
FSS2210-316-1	24"	24"	10"	Angular front	Left & right	16
FSSO2210-316-1	24"	24"	10"	Drop front	Left & right	16
FSSOL223410-316-1	24"	36"	10"	Drop front	Left	16
FSSOR223410-316-1	24"	36"	10"	Drop front	Right	16

Art sinks for the maintenance room in Type 316/316L stainless steel



ART48-316-1
Topmount with 3 1/2" waste

MODEL	FRONT-BACK	LEFT-RIGHT	DEPTH	MOUNTING TYPE	WASTE SIZE	GAUGE
ART36-316-1	19 1/8"	38 1/8"	8"	Topmount	3 1/2"	18
ART36-316-3C	19 1/8"	38 1/8"	8"	Topmount	1 1/2"	18
ART48-316-1	19 1/8"	50 1/8"	8"	Topmount	3 1/2"	18
ART48-316-3C	19 1/8"	50 1/8"	8"	Topmount	1 1/2"	18
ART60-316-1	19 1/8"	62 1/8"	8"	Topmount	3 1/2"	18
ART60-316-3C	19 1/8"	62 1/8"	8"	Topmount	1 1/2"	18

Scullery sinks in Type 316/316L stainless steel



MODEL	FRONT-BACK	LEFT-RIGHT	DEPTH	WASTE LOCATION	GAUGE
SL2424-316-1	27 3/16"	27 3/16"	14"	Center	16
SL2424-316-5	27 3/16"	27 3/16"	14"	Back right	16
SL2448-316-1	27 3/16"	51 3/8"	14"	Center	16
SL2448-316-5	27 3/16"	51 3/8"	14"	Back right	16

Commercial Sinks



CLICK HERE FOR THE ENTIRE
COMMERCIAL COLLECTION

Durable, lustrous, recyclable

Naturally hygienic and made to last a lifetime, Franke Commercial stainless steel sinks are a beautiful choice for hard-wearing areas. With hundreds of models to choose from, there is a stainless steel sink for every space and function.



Vanity basins for bathrooms in 18 gauge stainless steel



V1114-5
Oval vanity with no faucet ledge



OV1619-5
Vanity with faucet ledge and overflow

MODEL	FRONT-BACK	LEFT-RIGHT	DEPTH	BOWL SHAPE	FAUCET LEDGE	WASTE SIZE
V1114-5	10 7/8"	14 3/8"	5"	Oval	No	1 1/4"
V1114-5D	10 7/8"	14 3/8"	5"	Oval	No	1 1/2"
V17-5	16 3/4"	16 3/4"	5"	Round	No	1 1/4"
V17-6	16 3/4"	16 3/4"	6"	Round	No	1 1/4"
V1619-5-1	16 3/8"	18 1/2"	5"	D-shape	Yes, 1 hole	1 1/4"
V1619-5-3	16 3/8"	18 1/2"	5"	D-shape	Yes, 3 hole	1 1/4"
OV1619-5-1	16 3/8"	18 1/2"	5"	D-shape	Yes, 1 hole	1 1/4"
OV1619-5-3	16 3/8"	18 1/2"	5"	D-shape	Yes, 3 hole	1 1/4"

Topmount bar sinks for kitchenettes with EZ Torque fastening system



S9106-1
Bar sink with no faucet ledge

MODEL	FRONT-BACK	LEFT-RIGHT	DEPTH	WASTE LOCATION	FAUCET LEDGE	GAUGE
S9106-1	11 1/4"	13 5/8"	6"	Center	No	20
LBS9106-1	13 3/4"	13 5/8"	6"	Center	Yes	20
LBS1306-1	15 7/16"	15 1/8"	6"	Center	Yes	20
ALBS1306P-1	15 7/16"	15 1/8"	6"	Center	Yes	18
LBS1306-1	15 7/16"	15 1/8"	8"	Center	Yes	20

Institutional wall mount hand wash basins in stainless steel



WHB1716-3
Wall mount with 1 1/2" waste

MODEL	FRONT-BACK	LEFT-RIGHT	BOWL DEPTH	OVERFLOW	WASTE SIZE	GAUGE
WHB1716-3	15 1/2"	16 3/4"	6"	No	1 1/2"	20
WHB1617-3	17"	16 1/2"	6"	No	1 1/2"	18
WHB1617-6	17"	16 1/2"	6"	Yes	1 1/2"	18
WHB1617-7	17"	16 1/2"	6"	No	1 1/4"	18
WHB1819-3	19"	18 1/2"	7"	No	1 1/2"	18
WHB1819-6	19"	18 1/2"	7"	Yes	1 1/2"	18
WHB1819-7	19"	18 1/2"	7"	No	1 1/4"	18

A vision for a healthier future

Our vision is to reach net-zero greenhouse gas (GHG) emissions across our value chain by 2050 from a 2020 base year. We have established clear goals that support this ambition to contribute to a more sustainable world for our customers, employees, and society. We developed our near-term and net-zero targets in 2023 in line with the Paris Climate Agreement, and they were validated by the Science Based Targets initiative (SBTi) in February 2024, setting a cornerstone in our sustainability journey.



[CLICK HERE TO READ MORE ABOUT FRANKE'S COMMITMENT TO REDUCING GREENHOUSE GAS](#)



// We've reduced our scope 1 and 2 emissions for eight years running and our net-zero emissions reduction targets have been validated by the SBTi. //

Taking care of the environment

Packaging: Franke's total share of renewable packaging was 89.9%. Learn how we did it, click here.



Waste: 77.2% of waste across Franke Group was recycled. Download our 2024 Sustainability Report here.



Energy: 9.9% reduction in total electricity consumption in 2023 compared to 2022.





It's always been in our heritage to meet your needs.

Customer Care and Technical Assistance

If you ever experience a problem with any Franke product, simply contact our Customer Service at 1-800-626-5771.

Our dedicated North American customer care team is always here to assist you. Rest assured that a solution is a quick phone call away. We will restore the product's functionality through a replacement part or warranty replacement. Your satisfaction is our top priority, it's why we're here.

 **CALL US**
US: 1-800-626-5771

Certification

Our products are tested and certified to the highest standards to one or more of the independent certifications below.



cUPC®



For more information and for details on warranty and terms and conditions: www.franke.com



Franke Home Solutions

Contact us 800-626-5771
[franke.com](https://www.franke.com)

USA
#BUILDING_EXCELLENCE_0625

