

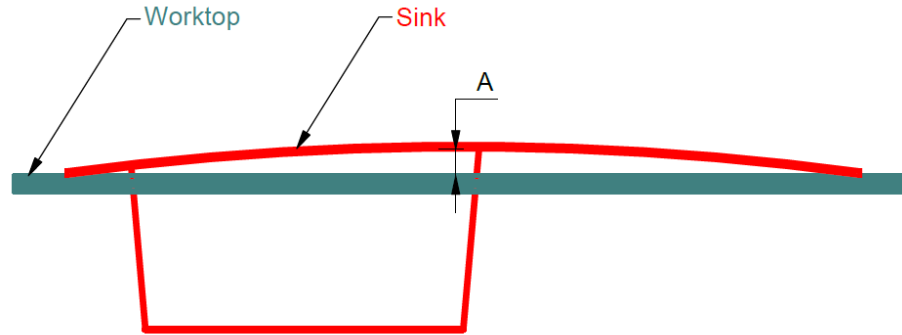
10th January 2024

# Fragranite products Instruction on sink bowing measurement

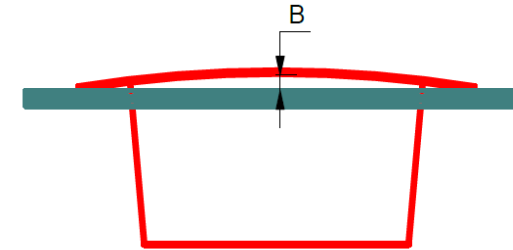


# Sink bowing measurement

Inset and Flushmount installation – maximum acceptable values in mm



Long side measurement



Short side measurement

| Sink type                             | Inset incl. Easy Flushmount installation |   |              |      |       |
|---------------------------------------|--|---|--------------|------|-------|
|                                       | Sink length                              |   |              |      |       |
|                                       | < 500 mm                                 |   | > 500 mm     |      |       |
| ↓                                     | A  | B | A            | B    |       |
| One/one & half bowl sink with drainer | 611/651                                  |   | Not existing | 3 mm | 2 mm* |
| Double bowl sink with drainer         | 621                                      |   |              |      |       |
| One bowl sink w/o drainer             | 610                                      |   | 1 mm         | 2 mm | 1 mm  |
| Double bowl sink w/o drainer          | 620                                      |   | Not existing |      |       |

\* short side w/o fixation - maximum acceptable bowing 1 mm

| Sink type                             | Flushmount installation |   |              |   |       |      |
|---------------------------------------|-------------------------|---|--------------|---|-------|------|
|                                       | Sink length             |   |              |   |       |      |
|                                       | < 500 mm                |   | > 500 mm     |   |       |      |
| ↓                                     | A                       | B | A            | B |       |      |
| One/one & half bowl sink with drainer | 211/251                 |   | Not existing |   | 2 mm* |      |
| One bowl sink w/o drainer             | 210                     |   | 1 mm         |   | 2 mm  | 1 mm |
| Double bowl sink w/o drainer          | 220                     |   | Not existing |   |       |      |

\* sink w/o fixation - maximum acceptable bowing 1 mm

# Sink bowing measurement

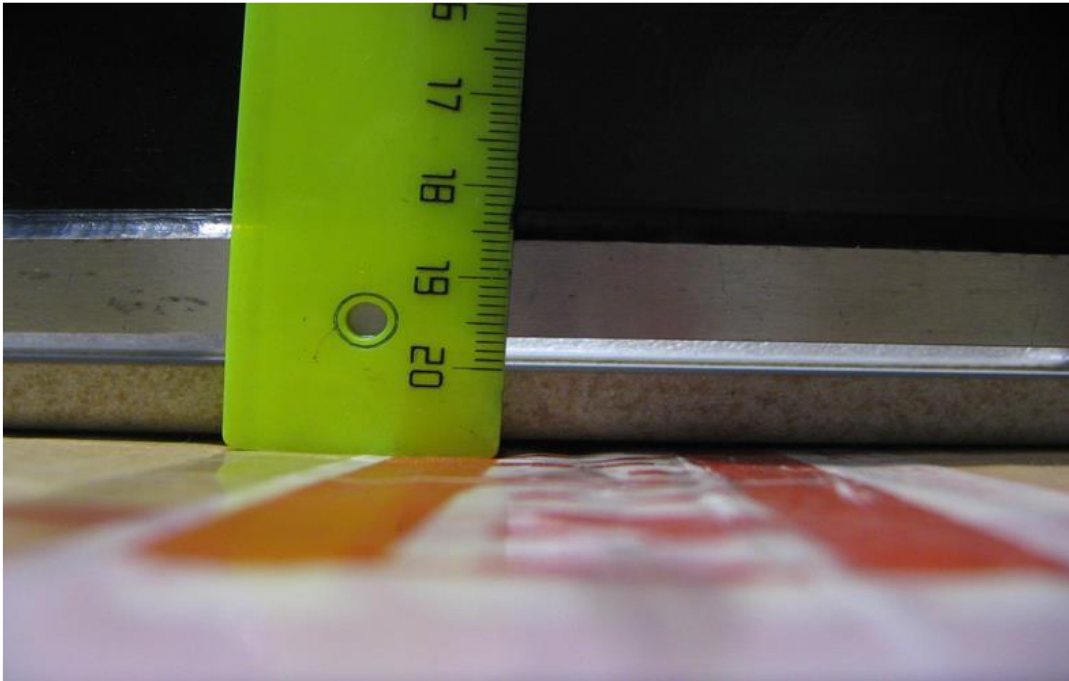
How to measure sink bowing?



The measurement must be carried out on an absolutely flat surface.

# Sink bowing measurement

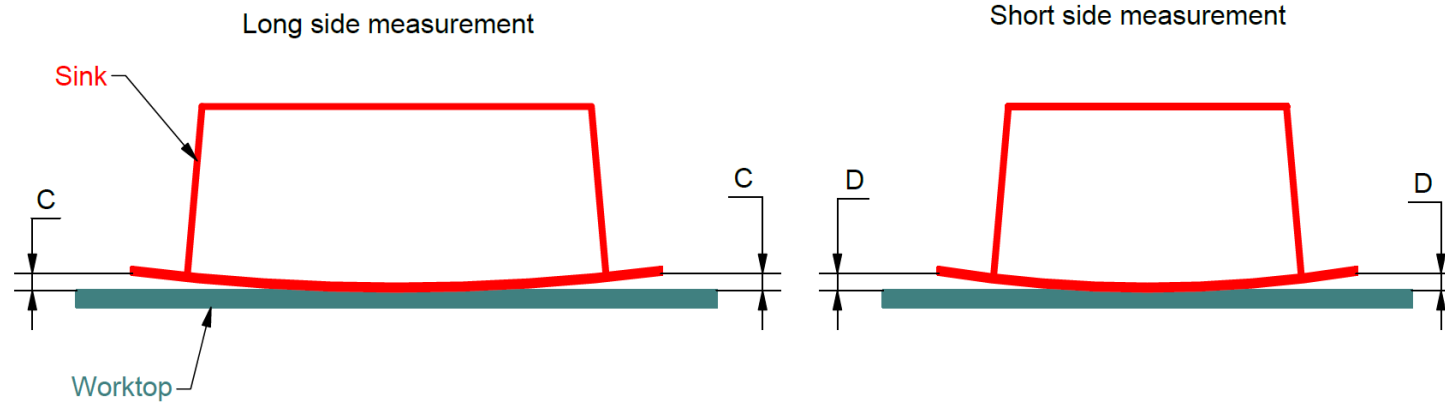
How not to measure sink bowing.



Do not measure bowing using rulers or any other unprecise measuring tools.

# Sink bowing measurement

Undermount installation – maximum acceptable values in mm



|                                       |           | Undermount installation |   |          |   |
|---------------------------------------|-----------|-------------------------|---|----------|---|
|                                       |           | Sink length             |   |          |   |
|                                       |           | < 500 mm                |   | > 500 mm |   |
|                                       |           | C                       | D | C        | D |
|                                       | Sink type |                         |   |          |   |
|                                       | ↓         |                         |   |          |   |
| One/one & half bowl sink with drainer | 111       | Not existing            |   | 2 mm     |   |
| One bowl sink w/o drainer             | 110       | 1 mm                    |   |          |   |
| Double bowl sink w/o drainer          | 120       | Not existing            |   |          |   |

## CONTACT

**Branislav Pasnišin**  
Product Engineer

Franke Slovakia s.r.o.  
SNP 840 / 180  
013 24 Strecno  
Slovakia

Phone +421 910 644 202

[branislav.pasnisin@franke.com](mailto:branislav.pasnisin@franke.com) | [www.franke.com](http://www.franke.com)

