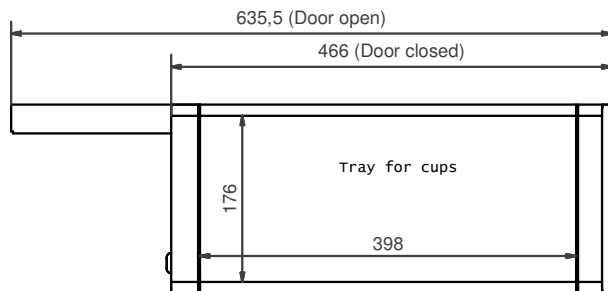
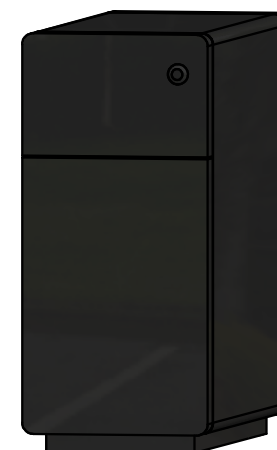
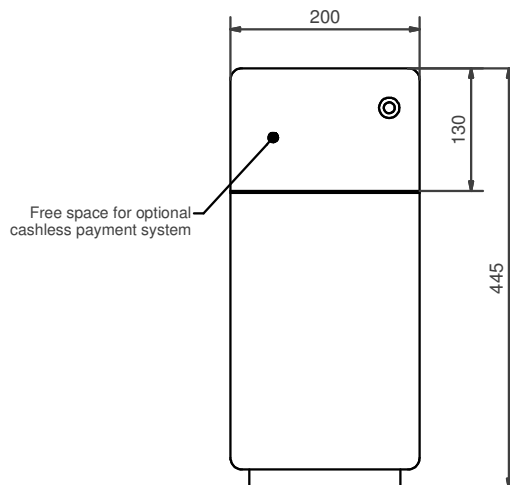
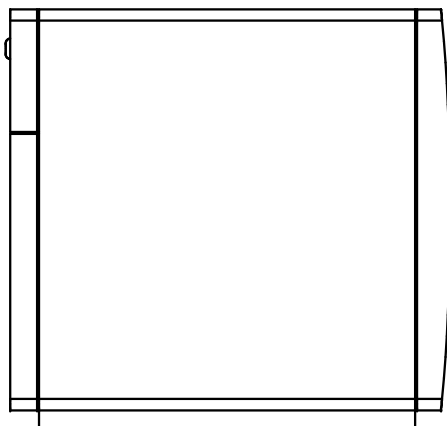


**Device heights:**  
 Device foot 40 mm (Option):  
 Hight 445 + 46 = 491

Device foot 70 mm (Option):  
 Hight 445 + 71 = 516 (bis 526)

Device foot 100 mm (Option):  
 Hight 445 + 100 = 545 (bis 555)



**Technical data:**  
 Electrical connection: 220-240 V, 1LNPE, 0,50 A, 50-60 Hz - EU  
 110-115 V, 1LNPE, 1,00 A, 60 Hz - US  
 100 V, 1LNPE, 0,95 A, 50-60 Hz - JP  
 220 V, 1LNPE, 0,50 A, 50 Hz - CN

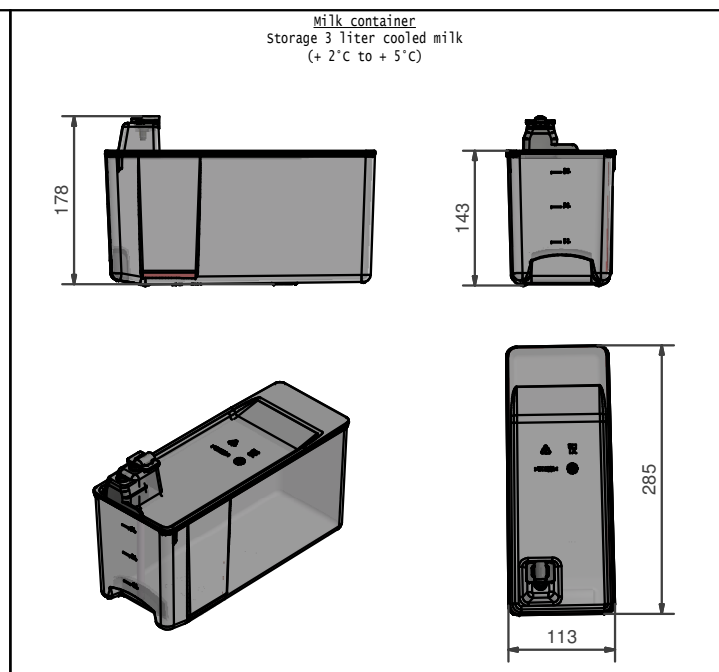
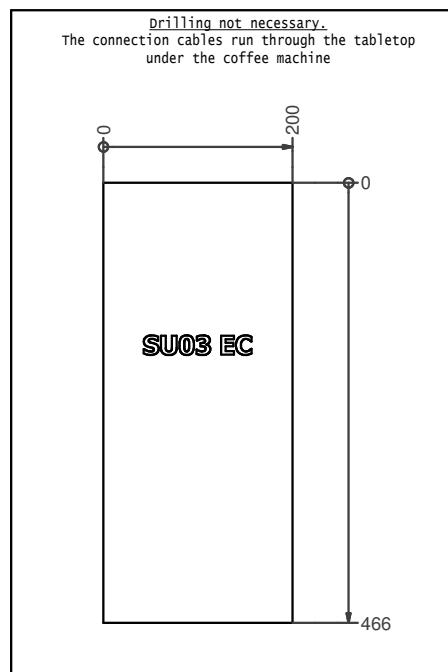
Energy loss: 0,187 kw/24h (according to DIN 18873-2)  
 Temperature range: + 2°C to + 5°C (Milk)  
 Net weight: up to max. 14,5 kg  
 Noise emission: < 70 dB (A)  
 Refrigerant: R600a - 13 grams  
 Climate class: T/5 tropical climate

**Installation notes on side:**  
 Socket with RCD (residual current device)  
 220-240 V, 1LNPE, 10 A, 50-60 Hz - EU  
 110-115 V, 1LNPE, 15 A, 60 Hz - USA  
 100 V, 1LNPE, 15 A, 50-60 Hz - JP  
 220 V, 1LNPE, 10 A, 50 Hz - CN

The cooling unit must be installed on the left side next to the coffee machine.  
 The supply lines are run through the tabletop under the coffee machine.  
 Wall clearance of the rear panel min. 50 mm.

**Installation requirements:**

Our delivered appliances are ready for operation. They have to be installed on a flat surface. First the preparations for the connections of water and electricity must be complete. Distance max. 1 m up to the device. This preparation-works must be performed by qualified specialists in accordance with applicable regulations. The device is intended exclusively for operation in interior rooms. Ambient temperatur: 5°C - 32°C. Humidity: max. 80%.



<b>FRANKE</b>		Unit	Scale	Description
Franken Kaffeemaschinen AG Franken-Strasse 9 CH-4963 Aarburg Telefon: +41 (0) 787 2607 E-Mail: kmz@franke.com Internet: www.franke.com		NTS	NTS	
Drawn	MB002	02.11.2021		TD_SU03_EC_en
Modified	MB002	02.11.2021		
Checked				
ECN	500000001512	Document ID - Version		Revision
Article Number		20218077-01		Status
				Sheet / Sheets
				Format
				15 1 / 1 A2