

**Devices heights:**

with feet 7 mm (Option):  
Height 698 + 7 = 705\*

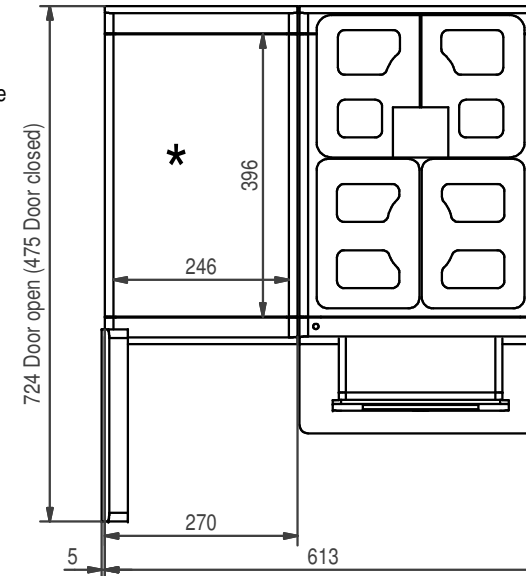
with feet 40 mm (Standard - Supplied):  
Height 698 + 46 = 744\*

Adjustable feet 70 mm (Option):  
Height 698 + 71 = 769\* (to 779\*)

Adjustable feet 100 mm (Option):  
Height 698 + 100 = 798\* (to 898\*)

\* with the optional bean container  
2x 1200 g or 1x 2000 g the device is  
52 mm higher.

\*Tray for cup storage  
(Heatable)



**Technical data:**

(A) SU05 CM:	220-240 VAC, 1LNPE, 1950-2300 W, 50-60 Hz - EU
	(Net weight 25 kg) 120 VAC, 1LNPE, 1440 W, 60 Hz - USA
	100 VAC, 1LNPE, 1350 W, 50-60 Hz - JP
	220 VAC, 1LNPE, 1950 W, 50 Hz - CN
(B) A400 MS EC:	220-240 VAC, 1LNPE, 2400-2800 W, 50-60 Hz, 16 Á - EU
	(Net weight 38 kg) 220-240 VAC, 1LNPE, 2100-2300 W, 50 Hz, 10 Á - CH/GB/EU
	200-220 VAC, 2L PE, 4500-5300 W, 60 Hz, 30 Á - USA
	200 VAC, 2L PE, 2300 W, 50-60 Hz, 16 Á - JP
	220 VAC, 1LNPE, 2600 W, 50 Hz, 16 Á - CN

Fresh water: Mains water connection, inlet hose Di8 x 1500 mm; G3/8" union nut

Waste water: Drip tray with drain hose Di20 x 2000 mm

<p>Franka Kaffeemaschinen AG Franken-Strasse 9 CH-4663 Aarburg Telefon: +41 62 787 3607 E-Mail: kmch@franke.com Internet: www.franke.com</p>	Unit	mm	Scale	NTS	Description <b>TD_A400FMCM_SU05_en</b>	
	Drawn	MB002	06.09.2017			
	Modified	MB002	06.09.2017			
	Checked					
ECN	500000001512	Document ID - Version	Revision	Status	Sheet / Sheets	Format
Article Number		20104671-01		15	1 / 2	A3

These drawings and specifications are the property of Franke Technology and Trademark Ltd. and shall not be reproduced, copied or transferred to any third party without the prior written permission of Franke Technology and Trademark Ltd., Heggen, Switzerland

**Installation notes on site:**

WW1: Waste water - DN50 funnel trap ventilated - A400 FM CM (B) for drainage hose

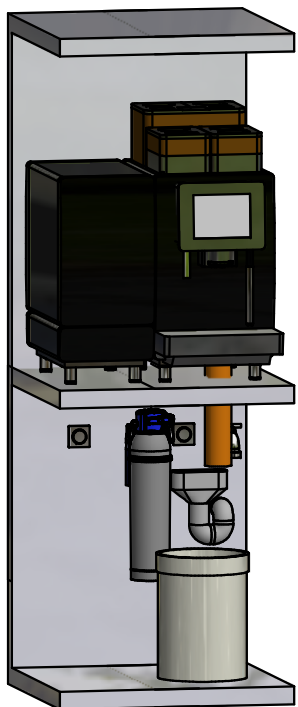
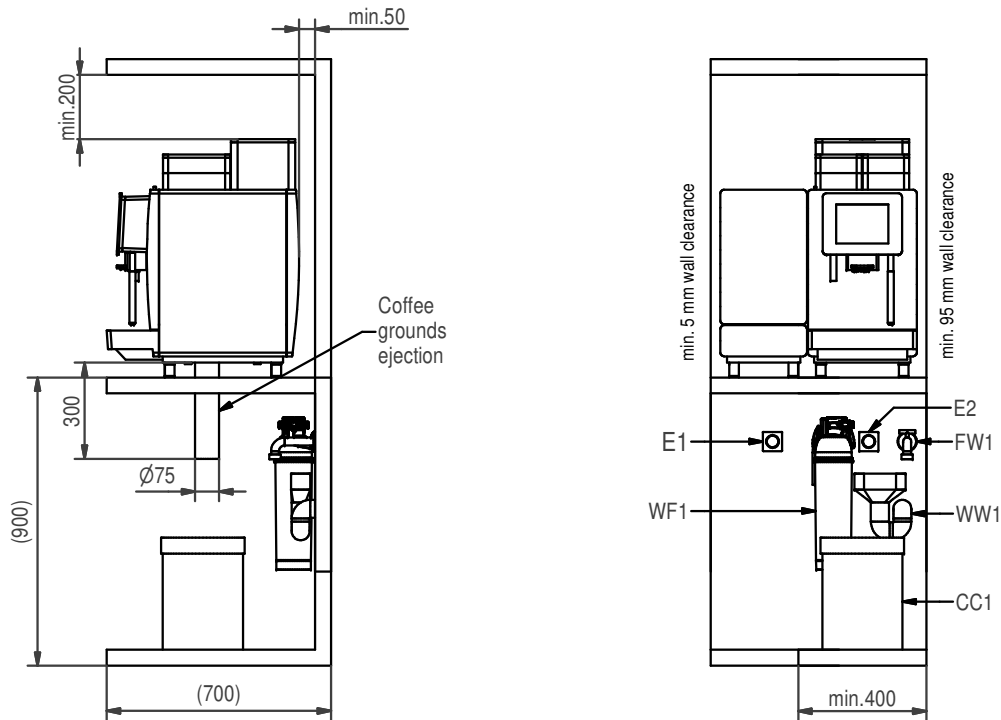
FW1: Mains water connection G3/8A external thread - A400 FM CM (B)  
 Check valve, filter and aquastop - recommendation  
 water pressure 80-800 kPa (0,8-8,0 bar)  
 Flow rate: >0,1l/sec. - Water temperatur <25°C  
 Water hardness: 4-8°dH; 7-14fH; 70-140ppm (mg/l)  
 Carbon hardness: 3-6°dH; 50-105ppm (mg/l) - pH-value: 6,5-7,5  
 Chlorine content: <0,5mg/l - Chloride content: <30mg/l  
 Elektrical conductivity: 50-200µs/cm - Iron content: <0,3mg/l

E1: Soket with RCD (residual current device) - SU05 CM (A)  
 220-240 VAC, 1L N PE, 1950-2300 W, 50-60 HZ - EU  
 120 VAC, 1L N PE, 1440 W, 60 HZ - USA  
 100 VAC, 1L N PE, 1350 W, 50-60 HZ - JP  
 220 VAC, 1L N PE, 1950 W, 50 HZ - CN

E2: Soket with RCD (residual current device) - A400 FM CM (B)  
 220-240 VAC, 1L N PE, 2400-2800 W, 50-60 HZ, 16 A - EU  
 220-240 VAC, 1L N PE, 2100-2300 W, 50 HZ, 10 A - CH/GB/EU  
 200-220 VAC, 2L PE, 4500-5300 W, 60 HZ, 30 A - USA  
 200 VAC, 2L PE, 2300 W, 50-60 HZ, 16 A - JP  
 220 VAC, 1L N PE, 2400 W, 50 HZ, 16 A - CN

CC1: Option container for coffee-grounds ejection - A400 FM CM (B)

WF1: Option water filter - A400 FM CM (B)

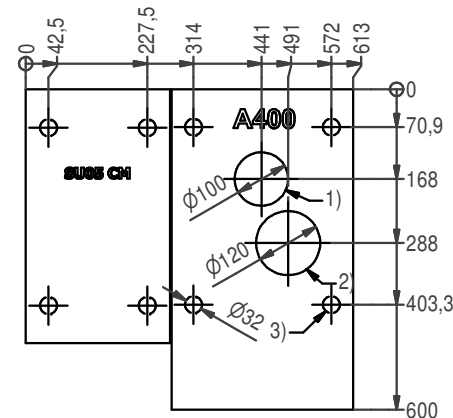


**Installation requirements:**

Our delivered appliances are ready for operation. They have to be installed on a flat surface. First the preparations for the connections of water and electricity must be complete. Distance max. 1 m up to the device. This preparation-works must be performed by qualified specialists in accordance with applicable regulations. The coffee machine is intended exclusively for operation in interior rooms.  
 Ambient temperatur: 5°C - 32°C.  
 Humidity: max. 80%

**Positions:**

- Pos. 1) 1x Drilling
  - Supply lines - A400 (B)
  - Supply lines - SU05 CM (A)
- Pos. 2) 1x Drilling (Option)
  - Coffee-grounds ejection - A400 (B)
- Pos. 3) 8x Surface
  - Equipment feet



<p>FRANKE                  Franke Kaffeemaschinen AG                  Franke-Strasse 9                  CH-4663 Aarburg                  Telefon: +41 62 787 3607                  E-Mail: kmch@franke.com                  Internet: www.franke.com</p>	Unit		Scale	Description						
	mm	NTS	NTS	TD_A400FMCM_SU05_en						
	Drawn	MB002	06.09.2017							
	Modified	MB002	06.09.2017							
Checked				ECN	500000001512	Document ID - Version	Revision	Status	Sheet / Sheets	Format
<small>These drawings and specifications are the property of Franke Technology and Trademark Ltd. and shall not be reproduced, copied or transferred to any third party without the prior written permission of Franke Technology and Trademark Ltd., Heggen, Switzerland</small>				Article Number	20104671-01			15	2 / 2	A3