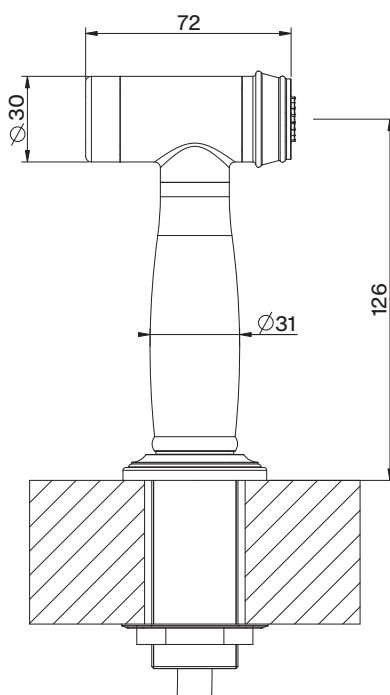


# FRANKE PERLA HAND RINSE

Installation instructions



**FRANKE**

## Important Technical data

Minimum operating pressure: 1.5 bar  
Maximum operating pressure: 5.5 bar  
Flow characteristics: Spray

This product is manufactured in accordance with recognised European standards. Please ensure that your Kitchen hand spray is fitted in accordance with Local Water Bylaws. This hand spray is intended for cold water only and is fitted with a check valve to prevent backflow.

These installation guidelines have been prepared for your direction and you must always exercise due care. We do not accept responsibility for problems that may occur through improper installation. Whilst assembling the hand spray take care not to accidentally loosen any factory fixed assemblies.

This hand spray has been 100% assembly tested; therefore, you may expect a small residual amount of water to remain in the unit when delivered. Any water marks can be removed using the above care advice.

## Installation Preparation

All parts should be removed from their packaging and inspected for completeness and transport damage prior to installation.

Prior to installing the new hand-spray, it is essential that you thoroughly flush through the supply pipes to remove any remaining solder, swarf, or impurities from your system. Failure to carry out this simple procedure could cause problems or damage to the workings of the hand-spray and invalidate the warranty.

We recommend installing isolation valves and particle (mesh) filters to the cold feed pipe in an accessible position. This will help to prevent premature failure of the valves and ease any future maintenance.

Shut off the water heating system and ensure that the mains stopcock is closed. Ensure both the hot and cold-water supplies are isolated before commencing installation.

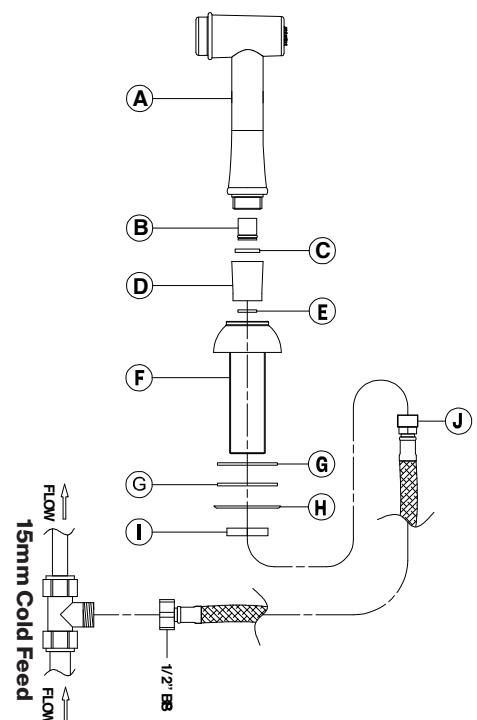
This hand spray requires a 35mm hole, the hand-spray hole area should be free from dirt and sealant. Check under the countertop to ensure that there is nothing that can interfere with the functionality of the hand-spray braided hose or fixings. You should ensure that the product will both fit into the depth of the mounting surface available and reach the required outlet positions before installation.

Loosely position the tail pipe under the countertop to check if any alteration to the existing pipework is required, if this is the case do this now.

Where this product is supplied with flexible inlet hoses you must follow the additional guidelines supplied for their correct installation.

## Installation

- 1 Pass 1 x rubber washer (G) over the thread of the hand spray dock (F).
- 2 Pass the thread of the hand spray dock through the predrilled 35mm hole (mentioned above in installation preparation), ensure the washer fits flush to the worktop surface.
- 3 On the underside of the countertop pass 1 x rubber washer (G) over the thread of the hand spray dock (F), then pass 1 x metal washer (H) and use the metal nut (I) to tighten the assembly together.
- 4 Item(A), (B), (C) and (D) should be pre-assembled.
- 5 Pass the braided hose (J) under the countertop and through the hand spray dock (F), in the orientation shown.
- 6 Place the Ø14mm fiber washer (E) into the reducing connector (D) and tighten the M15 swivel head of the braided hose (J) into the reducing connector (D).
- 7 Connect the ½" BSP side of the braided hose (J) to the cold-water mains supply as shown using a 15mm compression equal tee (not supplied).

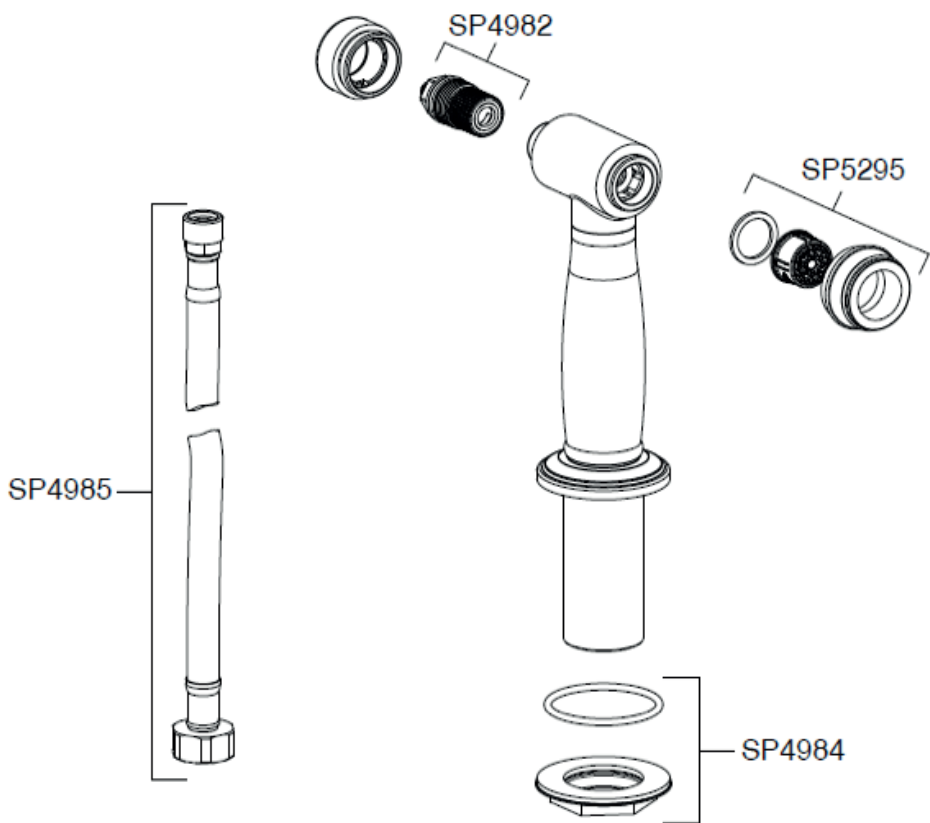


Available finish

112.0712.051	Chrome
112.0712.052	Décor Steel
112.0712.053	Polished Nickel
112.0712.054	Brass

Parts list as follows

FUN number	Part name	Part code
133.0717.284	Aerator Chrome	SP5295 CR
133.0717.288	Aerator Décor Steel	SP5295 DS
133.0717.289	Aerator Polished Nickel	SP5295 PN
133.0717.291	Aerator Brass	SP5295 BR
133.0717.294	Valve on/off	SP4982
133.0717.298	Fixing Kit	SP4984
133.0717.302	Flexible Hose	SP4985



## Guarantee

Your Franke mixer has been manufactured to the high standard you would expect of any Franke product but in the unlikely event that you should experience any defect in the materials or workmanship within one year of purchase, we will replace the faulty part free of charge. This is provided the mixer has only been used for normal domestic purposes in the UK and that the care, installation and maintenance instructions have been observed.

You should also retain your dated invoice as proof of purchase to validate any claims under our guarantee. This one year guarantee is extended to five years in the case of the valve mechanism.

Normal wear and tear is excluded from the guarantee. Decorative surface finishes are guaranteed for one year from the date of purchase provided our advice concerning care has been observed and no scouring agents have been used.

Scuffs and scratches caused by improper installation or accidental damage are not covered by this guarantee. Neither are slight shade variations or any damage or defect caused by incorrect installation or abuse of the fitting.

## Service

For spare parts, servicing or any other queries, visit **[www.franke.com](http://www.franke.com)**

## Optional tap brace

A large or heavy tap fitted to a stainless steel inset sink may occasionally flex the sink. To counteract this, Franke has developed an innovative tap brace that can be purchased separately. The tap brace connects the tap to the worktop and not just to the sink, offering additional support to the tap and much more stability when fitted. The tap brace has a variable collar to ensure it will fit most models of tap and can be used on any inset stainless steel sink.

The Franke tap brace is available on request from most kitchen retailers.



Franke UK Limited  
West Park, MIOC  
Styal Road  
Manchester  
M22 5WB  
Tel: +44 (0)161 436 6280  
Fax: +44 (0)161 436 2180  
Email [info.uk@franke.com](mailto:info.uk@franke.com)  
**[www.franke.com](http://www.franke.com)**

