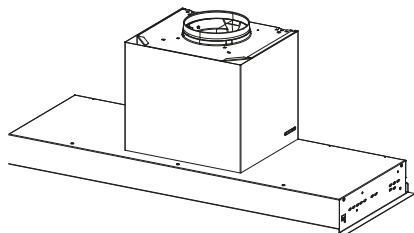




EN USER MANUAL




FST DRIP-FREE 60 X/2 KL  
FST DRIP-FREE 90 X/2 KL

## 1. SAFETY INFORMATION

 For your own safety and to ensure proper operation of the appliance, please read this manual carefully before installation and operation. Keep these instructions together with the appliance, even if it is sold or transferred to third parties. It is important that users know all the appliance's operating and safety characteristics.

 The cables must be connected by a trained technician.

- The manufacturer shall not be considered responsible for any injury or damage caused by improper installation or use.
- The minimum safety distance between the hob and the suction hood is 650 mm (some models may be fitted at a lower height; please see the paragraph relating to working dimensions and installation).
- If the instructions for installation of the gas hob specify a distance greater than the one indicated, this must be taken into account.
- Check that the mains power supply corresponds to the one indicated on the data plate affixed inside the hood.
- The cut-out devices must be installed in the fixed system according to wiring system regulations.
- For Class I appliances, check that the domestic power supply is adequately earthed.
- Connect the hood to the flue using a pipe with a minimum diameter of 120 mm. The fumes must travel the shortest distance possible.
- All the air venting regulations must be complied with.
- Do not connect the ducting hood to flues that also carry combustion fumes (e.g. boilers, chimneys, etc.).
- If the hood is used in combination with non electric appliances (e.g. gas appliances), a sufficient level of ventilation must be guaranteed in the room to prevent any exhaust backflow. If the kitchen hood is used in combination with appliances that are not electrically powered, the negative pressure in the room must not exceed 0.04 mbar to avoid any risk of the fumes being sucked back into the room by the hood.
- The air must not be extracted through a flue that is also used as an exhaust flue for fumes from gas or other fuel powered combustion devices.
- If it is damaged, the power cable must be replaced by the manufacturer or by a service technician.
- Connect the plug to a socket that complies with current regulations and is in an accessible position.

- As regards the technical and safety measures to be taken for exhausting of fumes, it is important that the regulations set by local authorities be complied with scrupulously.
- ⚠ CAUTION: remove the protective films before installing the hood.
- Only use screws and hardware of a sort suitable for the hood.
- ⚠ CAUTION: failure to install the screws or fixing devices as described in these instructions may mean there is a risk of electric shocks.
- Do not look directly at the light through optical devices (binoculars, magnifying glasses...).
- Do not flambé food under the hood: you might cause a fire.
- This appliance may be used by children over the age of 8 years and by persons with limited psycho-physical and sensory abilities or with insufficient experience and knowledge, provided they are carefully supervised and instructed on how to use the appliance safely and on the dangers that it involves. Make sure that children are not allowed to play with the appliance. Cleaning and maintenance to be performed by the user must not be carried out by children, unless they are under supervision.
- Supervise children, to make sure they do not play with the appliance.
- The appliance must not be used by persons (including children) with limited psycho-physical or sensory capacities or with insufficient experience and knowledge, unless they are carefully supervised and instructed.
- ⚠ Accessible parts may become extremely hot during the use of cooking appliances
- Clean and/or replace the filters after the period of time indicated (danger of fire). See the paragraph on Maintenance and cleaning.
- The room must be adequately ventilated when the hood is used simultaneously with appliances that use gas or other fuels (not applicable to appliances that only discharge air into the room).
- The symbol  on the product or on its packaging indicates that the product must not be disposed of with the normal domestic waste. The product must be disposed of at a specialist re-cycling centre for electrical and electronic components. By making sure that this product is disposed of properly, you will help prevent possible negative consequences for the environment and for health that might result from its improper disposal. For more detailed in-

formation on how to re-cycle this product, please contact your local municipal offices, local waste disposal service or the shop in which the product was purchased.

## Declaration of Conformity

The manufacturer declares that this device with wireless radio functionality complies with directive 2014/53/EU.

The complete text of the EU declaration of conformity is available at the following link by searching for the product code:

“<https://www.franke.com>”

This code can be found on the label located inside the product.

Frequency bands	Maximum transmitted power
2.4 GHz	100 mW max.

## 2. USE

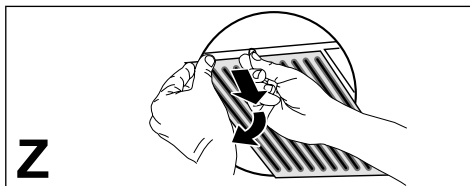
- The suction hood has been designed exclusively for domestic use, to eliminate kitchen odours.
- Never use the hood for purposes other than those for which it was designed.
- Never leave high flames under the hood when it is in operation.
- Adjust the intensity of the flame so that it is directed onto the bottom of the cooking pan, making sure it does not wrap around the sides.
- Deep-fryers must be kept under constant supervision when in use: the oil may catch fire if it gets too hot.
- The ZERO DRIP SYSTEM offers the best performance when the hood is used at maximum suction power (third speed with hood in suction

mode, Intensive speed with hood in filtering mode, see CONTROLS paragraph).

- It is advisable to leave the hood on for a few minutes after the end of cooking.
- It is advisable not to remove the grease filters as soon as cooking is finished to allow time for any condensate that has collected in the grease filter to settle in the tray.
- Always open the flap as far as it will go.
- If the hood is installed in filtering mode, it is advisable to carry out the following procedure: by holding button B pressed for approximately two seconds, when all the loads are off (motor+lights), the activated carbon filters alarm is activated and the Intensive speed is no longer timed to 6 minutes but has an infinite duration (like the other speeds).

## 3. CLEANING AND MAINTENANCE

- For maintenance of the activated carbon filter, refer to the instruction sheet inside the kit.
- The grease filters must be cleaned every 2 months of operation or more frequently in case of very intense use and can be washed in a dishwasher (Z).
- When washing in the dishwasher, the metal mesh of the grease filter may darken but its filtering characteristics do not change.
- Be careful not to compress the metal filters.



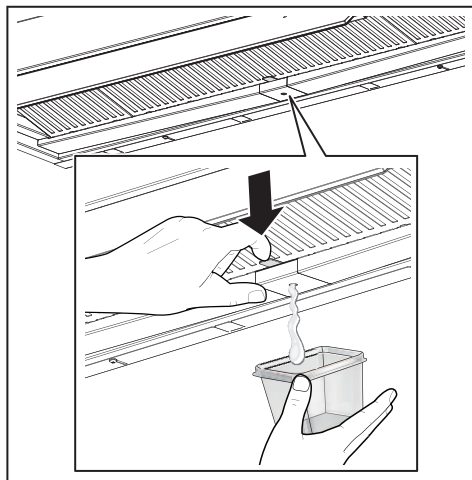
- Clean the hood using a damp cloth and a neutral liquid detergent.

- For external and internal cleaning of the hood avoid alcoholic or silicone products.

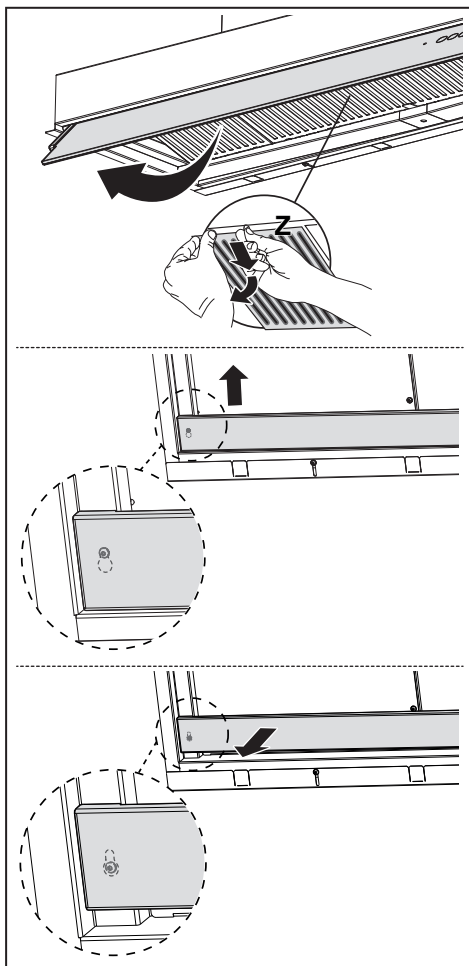
If the product or one of its parts is made of stainless steel, use specific non-abrasive products for cleaning and follow the lines of the satin finish during cleaning.

### Maintenance of the condensate tray




- The tray should be emptied and cleaned AT LEAST once a week or more frequently depending on the use of the hood.



- Dry the hood once it has been switched off.
- **Attention!** Residual condensate may remain inside the tray even after performing the emptying operation.
- **ATTENTION:** Once the tray has been removed, it is possible to use a cloth to remove any residual condensate but be careful with the springs.



## 4. CONTROLS

<div style="display: flex; justify-content: space-around; align-items: center;"> <div style="text-align: center;">  T1         </div> <div style="text-align: center;">           2 T2         </div> <div style="text-align: center;">           3<sup>sp</sup> T3         </div> <div style="text-align: center;">  T4         </div> <div style="text-align: center;">  T5         </div> </div>			
Key	Key press	Function	LED
T1	Short	Turns the motor on/off at the first speed.	On / Off
	Long press with all loads off (motor and lights)	<b>K-Link uncoupling</b> Starts the procedure for the cancellation of all compatible K-Link devices previously coupled with the K-Link coupling function.	Upon successful completion of the procedure LEDs T1 and T2 flash 5 times.
T2	Short	Turns the motor on/off at the second speed.	T1 and T2 On / Off
	Long press with light on	Activates/Deactivates the <b>Activated Carbon Filters alarm</b> .	T1 flashes twice: alarm activated. T1 flashes once: alarm deactivated.
T3	Short	Turns the motor on at the third speed.	T1 and T3 On / Off
	Long press with light or motor on	Turns the motor on at the <b>Intensive</b> speed. This speed is timed for 6 minutes. At the end of this time, the system automatically returns to the previously selected speed. If activated with the motor off, once the time has passed it switches to OFF mode. <b>When the carbon filters alarm is activated, the Intensive speed is no longer timed to 6 minutes but has an infinite duration.</b>	Flashing
	Long press with all loads off (motor and lights)	The <b>Filter saturation alarm</b> is reset.	T1 flashes 3 times.
		Signals the <b>saturated Metal Grease Filters alarm</b> and the need to wash them. The alarm is activated after 100 hours of effective hood operation.	T1 flashes slowly
	Signals the <b>Activated Charcoal Odour Filter saturation alarm</b> . The alarm is activated after 200 hours of effective hood operation.	T1 flashes fast	
T4	Short	Activates/Deactivates the Automatic operating mode. AUTO mode is deactivated whenever any other keys are pressed. AUTO mode is activated when the key is pressed or the <b>Coupled Induction Cooktop</b> is turned on. The hood speed is automatically set using the highest power level present on the hob. When the induction cooktop is turned off the last activated speed is held for 5 seconds, then speed 1 for 15 minutes. Once the 15 minutes have passed the motor turns off. The light status does not change.	Fixed light: AUTO mode activated.  Off: AUTO mode temporarily deactivated.
	Long press with all loads off (motor and lights)	<b>K-Link coupling</b> Before starting the procedure follow the specific instructions of the manuals of the devices to be coupled. For the remote control, see "connected mode". Starts the pairing procedure between the hood and compatible K-Link devices (induction cooktop or remote control). Up to 3 induction cooktops can be paired and only one remote control. See the manual of the devices for details of the operations that need to be performed on these. The coupling procedure takes 2 minutes. If no devices are recognised within this time check that you have previously activated the procedure for the devices to be coupled. The maximum number of linkable devices may have been reached.	LEDs T1 and T2 flashing: coupling in progress.  Upon successful completion of the procedure LEDs T1 and T2 will light up for 2 seconds.
T5	Short	The lights alternate between high intensity, medium intensity (if present), off.	On / Off

**Recommended device coupling sequence:**

- 1 - K-Link Mode (See "connected mode" of remote control manual)
- 2 - K-Link Coupling (See hood manual)
- 3 - Remote Control-Hood Coupling (See remote control manual)
- 4 - K-Link Coupling (See hood manual)
- 5 - Cooktop-Hood Coupling (See induction cooktop manual)

## 5. LIGHTING

- Please contact the Service Department to change it ("Please contact the service department to purchase it").
- Lamps in risk group 1 under IEC/EN62471 at a distance of 20cm and in exempt from risk group under IEC/EN62471 at a distance of 30cm.



Franke UK Limited  
West Park, MIOC  
Styal Road  
Manchester  
M22 5WB  
Tel: +44 (0)161 436 6280  
Fax: +44 (0)161 436 2180  
Email [info.uk@franke.com](mailto:info.uk@franke.com)  
**[www.franke.com](http://www.franke.com)**