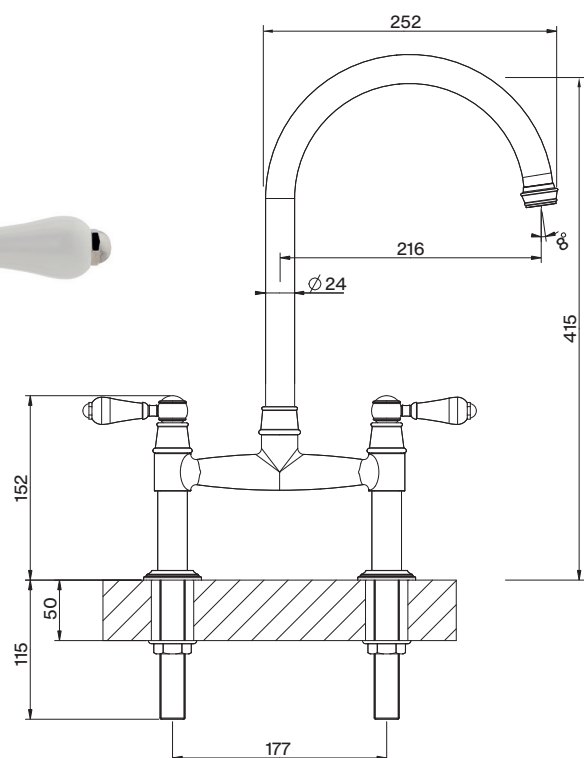


# FRANKE GLORIANA CLASSIC BRIDGE MIXER TAP

Installation instructions



**FRANKE**

## Technical data

Minimum water pressure: 7.25PSI (0.5 bar)

Maximum water pressure: 75PSI (5 bar)

Maximum hot water temperature: 70°C

Recommended hot water temperature: 65°C

**Note:** Exceeding these temperatures or water pressures can result in damage to the tap.

**A pressure reducing valve may be required to be fitted in high water pressure situations.**

## Attention

Before installing the new mixer it is essential that you thoroughly flush through the supply pipes in order to remove any remaining swarf, solder or other impurities.

Failure to carry out this simple procedure could cause problems or damage to the workings of the mixer.

Having first checked all new connections, turn on the mains stopcock, close all taps except the new mixer and as the system starts to refill check for leaks.

Once you have satisfied yourself that there are no leaks, switch on the water heating.

## Preparation

First shut off your water heating system then, with your mains stopcock closed, open the lowest hot and cold taps in the house and allow to run until the cold storage tank and pipes are empty (the hot water storage cylinder always remains full).

## Installation

Having attached the pillars using the rubber washers, place sink mixer in position to see if any alteration to the existing supply pipework is necessary.

After making any necessary alterations to the pipework, check that the mixer body is correctly positioned. Hot water should be connected to the left when viewed from the front.

Tightening the nut between legs and body, ensure that the washer (supplied) is in place and nuts are fully tightened to avoid leaks. Also, prevent scuffing by protecting the nut with a soft cloth when tightening with a spanner.

Pass the rosette and rubber washer over each leg. Put the tap in position, forming a seal on the sink or worktop.

Pass the other rubber washer and plastic nut over each leg and fully tighten.

## Warning

These hints have been prepared for your guidance, you must exercise due care at all times. We do not accept responsibility for any problems that may occur through incorrect installation.

**NB:** If for any reason the spout is removed from the tap, care must be taken when reinserting the spout into the body to ensure that the Grub Screw is located in the split of the white PTFE ring.

## How to care for your tap

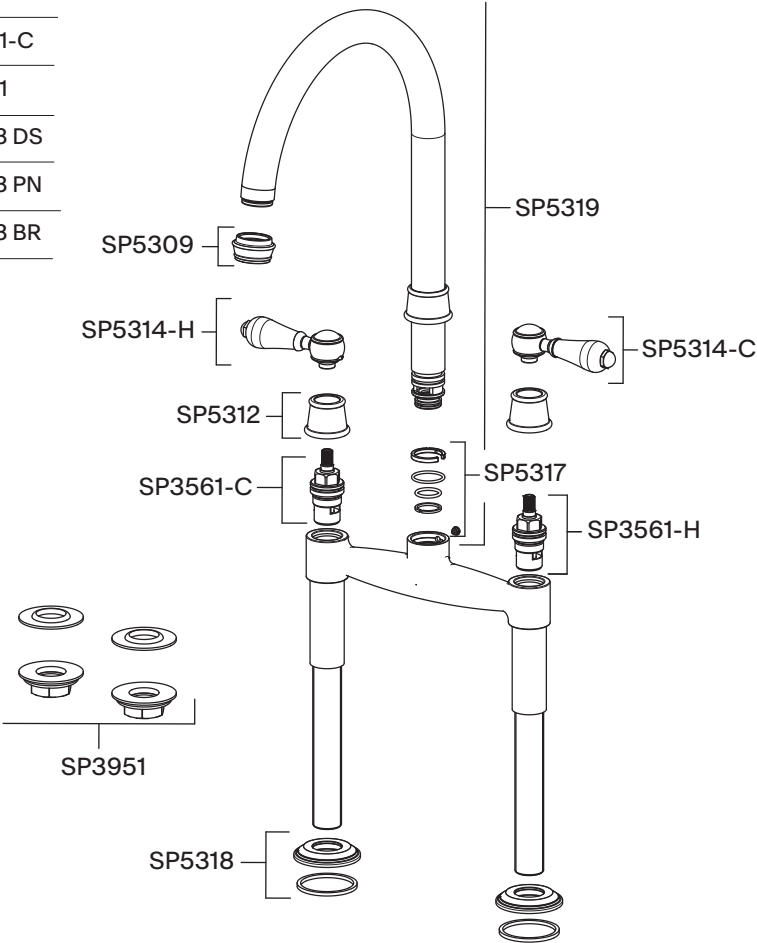
To maintain the appearance of this tap, ensure it is cleaned only using a clean, soft damp cloth. A solution of warm water and mild liquid detergent may be used where necessary, and then the fitting rinsed thoroughly. Abrasive cleaners or acidic cleaners **MUST NOT BE USED** under any circumstances. Avoid contact with all solvents.

Available finish

115.0712.045	Décor Steel
115.0712.046	Polished Nickel
115.0712.047	Brass

Parts list as follows

FUN number	Part name	Part code
133.0717.234	Aerator Décor Steel	SP5309 DS
133.0717.235	Aerator Polished Nickel	SP5309 PN
133.0717.236	Aerator Brass	SP5309 BR
133.0717.299	Spout Décor Steel	SP5319 DS
133.0717.300	Spout Polished Nickel	SP5319 SS
133.0717.301	Spout Brass	SP5319 BR
133.0717.303	‘O’ ring Kit	SP5317
133.0717.304	Hot Handle Décor Steel	SP5314-H DS
133.0717.305	Cold Handle Décor Steel	SP5314-C DS
133.0717.306	Hot Handle Polished Nickel	SP5314-H PN
133.0717.307	Cold Handle Polished Nickel	SP5314-C PN
133.0717.308	Hot Handle Brass	SP5314-H BR
133.0717.309	Cold Handle Brass	SP5314-C BR
133.0717.285	Valve Cover Décor Steel	SP5312 DS
133.0717.286	Valve Cover Polished Nickel	SP5312 PN
133.0717.287	Valve Cover Brass	SP5312 BR
133.0194.088	Hot Valve	SP3561-H
133.0194.089	Cold Valve	SP3561-C
133.0717.315	Fixing Kit	SP3951
133.0717.310	Base Plinth Décor Steel	SP5318 DS
133.0717.311	Base Plinth Polished Nickel	SP5318 PN
133.0717.312	Base Plinth Brass	SP5318 BR



## Guarantee

Your Franke mixer has been manufactured to the high standard you would expect of any Franke product but in the unlikely event that you should experience any defect in the materials or workmanship within one year of purchase, we will replace the faulty part free of charge. This is provided the mixer has only been used for normal domestic purposes in the UK and that the care, installation and maintenance instructions have been observed.

You should also retain your dated invoice as proof of purchase to validate any claims under our guarantee. This one year guarantee is extended to five years in the case of the valve mechanism.

Normal wear and tear is excluded from the guarantee. Decorative surface finishes are guaranteed for one year from the date of purchase provided our advice concerning care has been observed and no scouring agents have been used.

Scuffs and scratches caused by improper installation or accidental damage are not covered by this guarantee. Neither are slight shade variations or any damage or defect caused by incorrect installation or abuse of the fitting.

## Service

For spare parts, servicing or any other queries, visit [www.franke.com](http://www.franke.com)

Franke UK Limited  
West Park, MIOC  
Styal Road  
Manchester  
M22 5WB  
Tel: +44 (0)161 436 6280  
Fax: +44 (0)161 436 2180  
Email [info.uk@franke.com](mailto:info.uk@franke.com)  
[www.franke.com](http://www.franke.com)

## Optional tap brace

A large or heavy tap fitted to a stainless steel inset sink may occasionally flex the sink. To counteract this, Franke has developed an innovative tap brace that can be purchased separately. The tap brace connects the tap to the worktop and not just to the sink, offering additional support to the tap and much more stability when fitted. The tap brace has a variable collar to ensure it will fit most models of tap and can be used on any inset stainless steel sink.

The Franke tap brace is available on request from most kitchen retailers.

