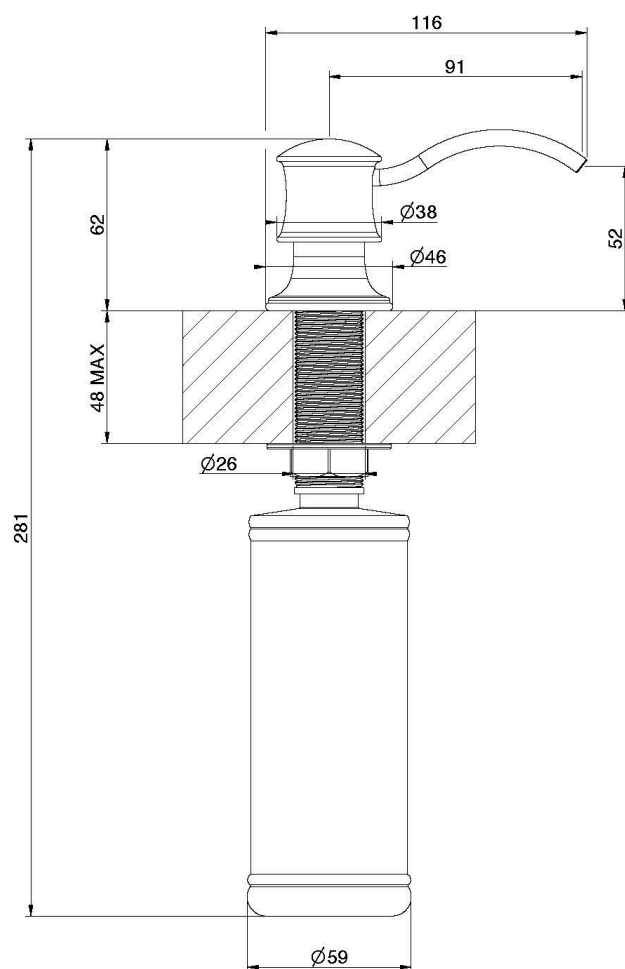


FRANKE AUGUSTA SOAP DISPENSER

Installation instructions

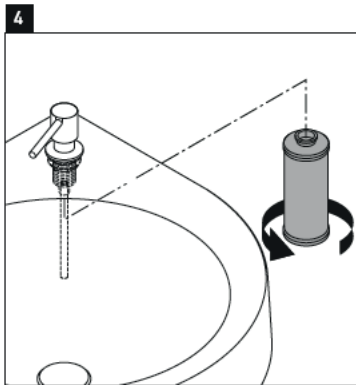
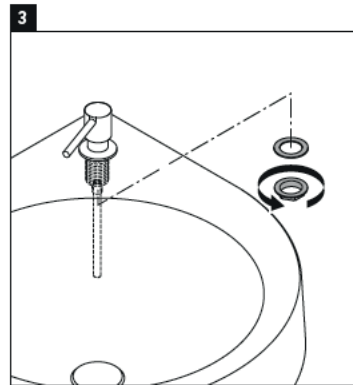
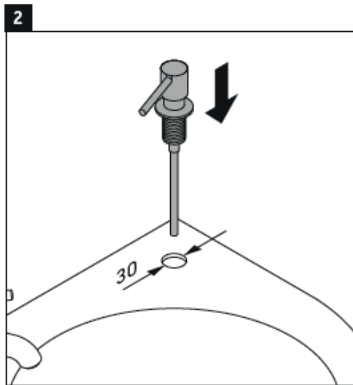
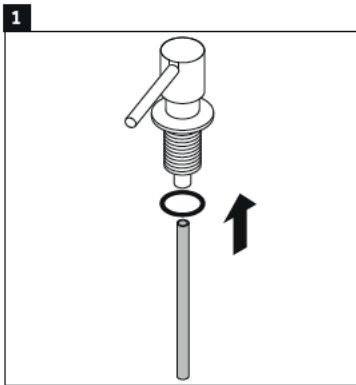
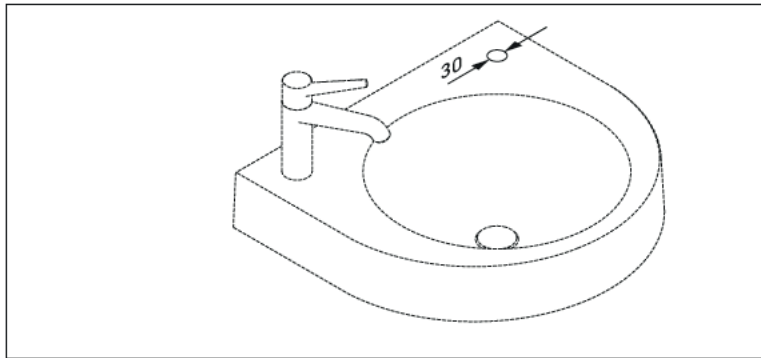
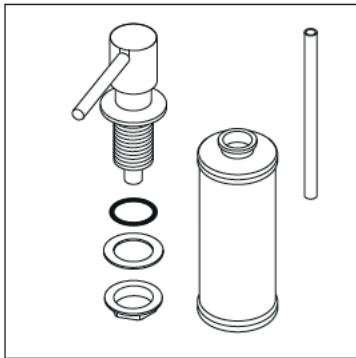


FRANKE

Installation Instructions:

All parts should be removed from their packaging and inspected for any transport damage prior to installation.

This soap dispenser requires a hole size between from $\varnothing 26\text{mm}$ to $\varnothing 35\text{mm}$.



How to care for your Soap Dispenser

To maintain the appearance of this product, ensure that it is regularly cleaned only using a clean, soft damp cloth. A solution of warm water and a mild liquid detergent may be used where necessary, and then the fitting rinsed thoroughly and wiped dry. Any other cleaning action will invalidate your warranty.

Abrasive cleaners, scouring cleaners and acidic cleaners must not be used under any circumstances. Avoid contact with all solvents (including chlorinated solvents, ketones or acetones as these may result in surface deterioration or etching). Also avoid contact with any harsh household chemicals such as oven cleaners, drain cleaners, rust removers, paint strippers and toilet bowl cleaners, Bar Keepers Friend or similar.

Guarantee

Your Franke soap dispenser has been manufactured to the high standard you would expect of any Franke product but in the unlikely event that you should experience any defect in the materials or workmanship within one year of purchase, we will replace the faulty part free of charge. This is provided the soap dispenser has only been used for normal domestic purposes in the UK and that the care, installation and maintenance instructions have been observed. You should also retain your dated invoice as proof of purchase to validate any claims under our guarantee. Normal wear and tear excluded from the guarantee.

Decorative finishes are guaranteed for one year from the date of purchase provided our advice concerning care has been observed and no scouring agents have been used. Scuffs and scratches caused by improper installation or accidental damage are not covered by this guarantee. Neither are slight shade variations or any damage or defect caused by incorrect installation or abuse of the fitting.

Service

For spare parts, servicing or any other queries, visit www.franke.com

Franke UK Limited
MIOC Styal Road Manchester M22 5WB
Tel: +44 (0)161 436 6280 Fax: +44 (0)161 436 2180
Email info.uk@franke.com www.franke.com

