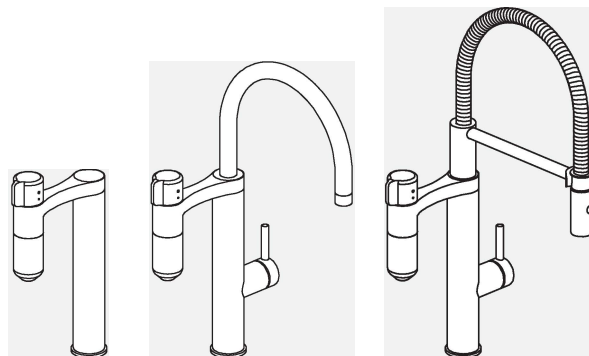


Vital



EN Installation and user manual

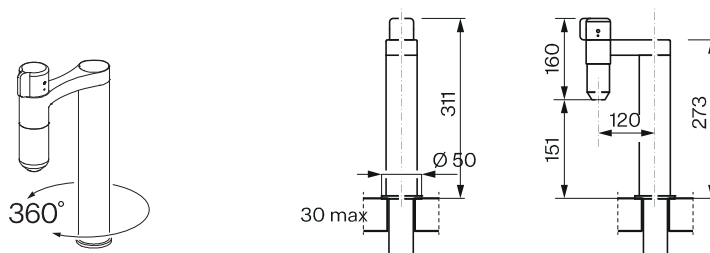
Kitchen Filter Tap



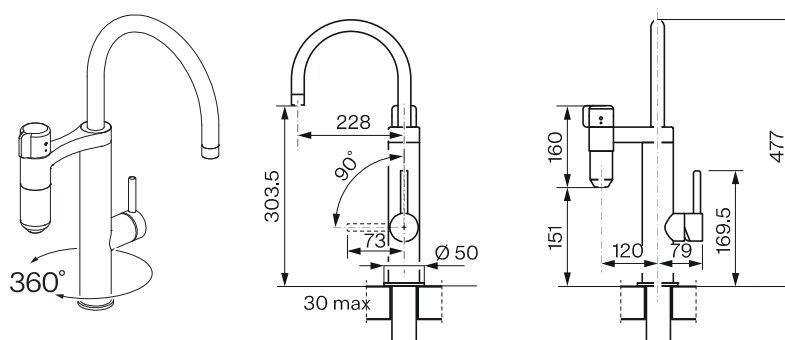
FRANKE

**A**

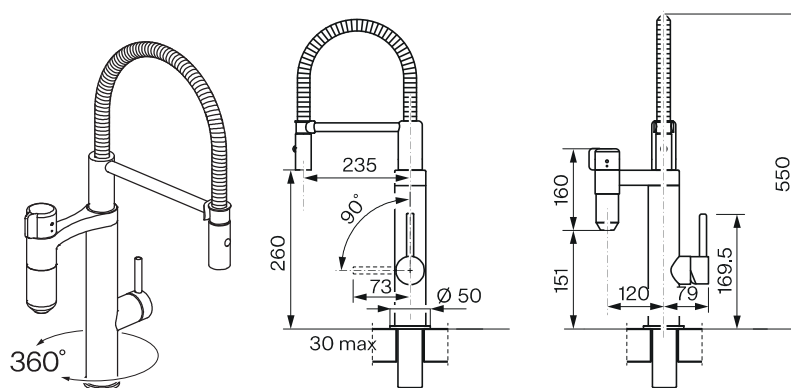
Vital Capsule Solo

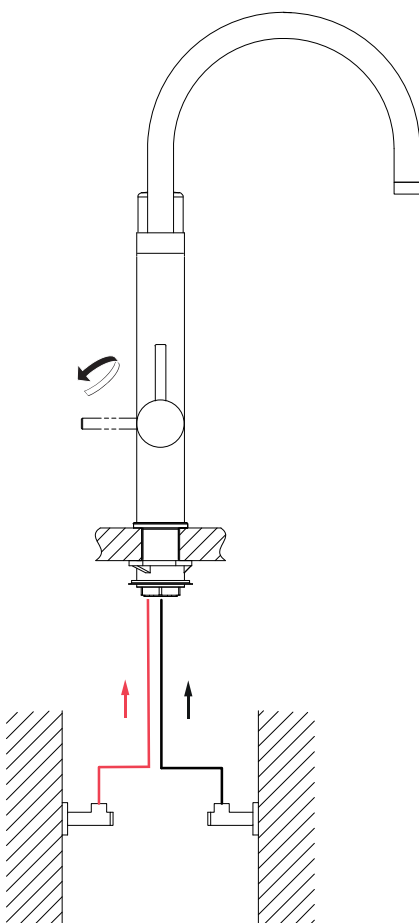
**B**

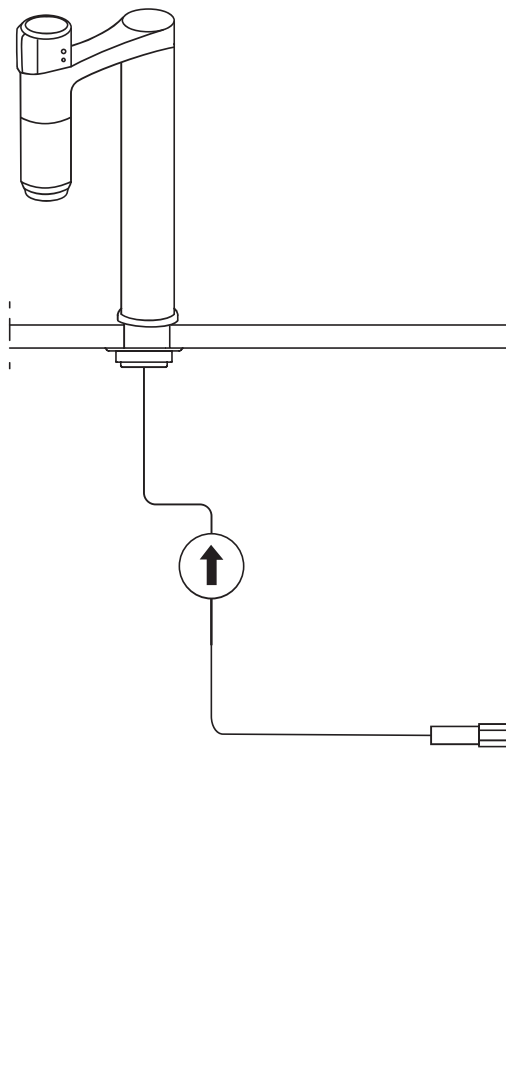
Vital Capsule Tap swivel J-spout

**C**

Vital Capsule Tap swivel Highflex-spout

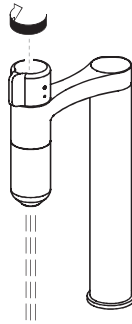






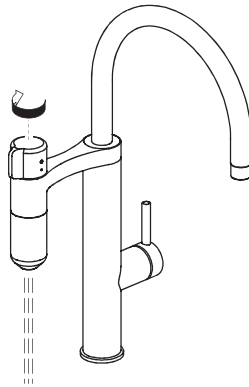
i

A

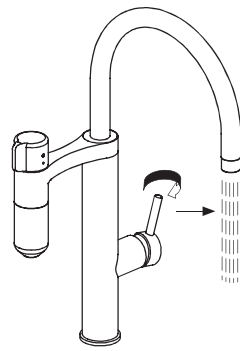


B

1

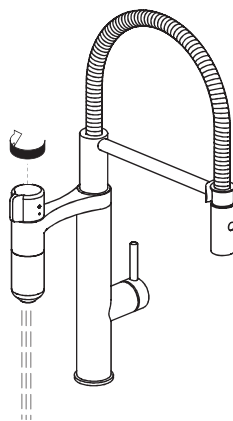


2

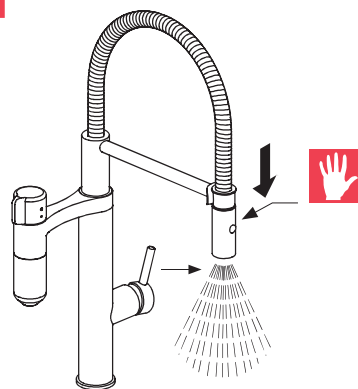


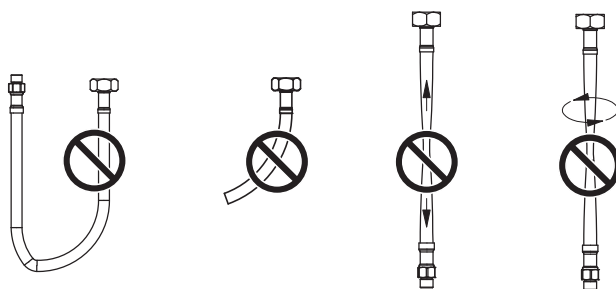
C

1



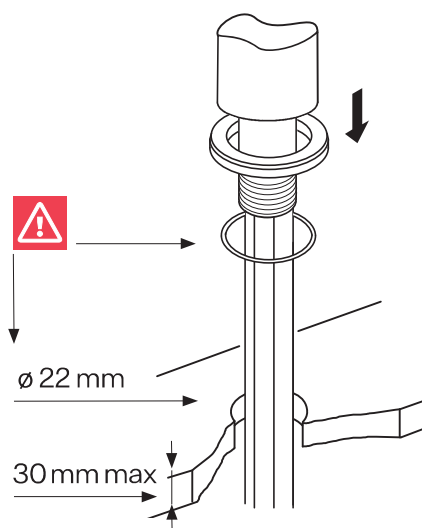
2





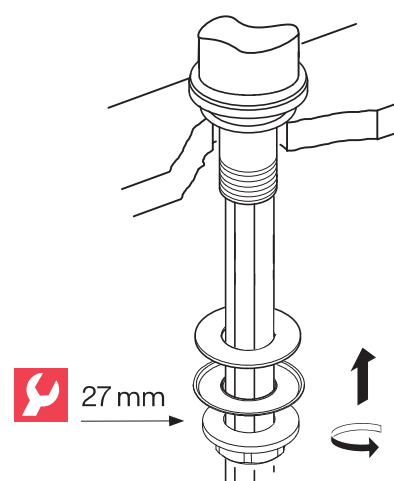
1

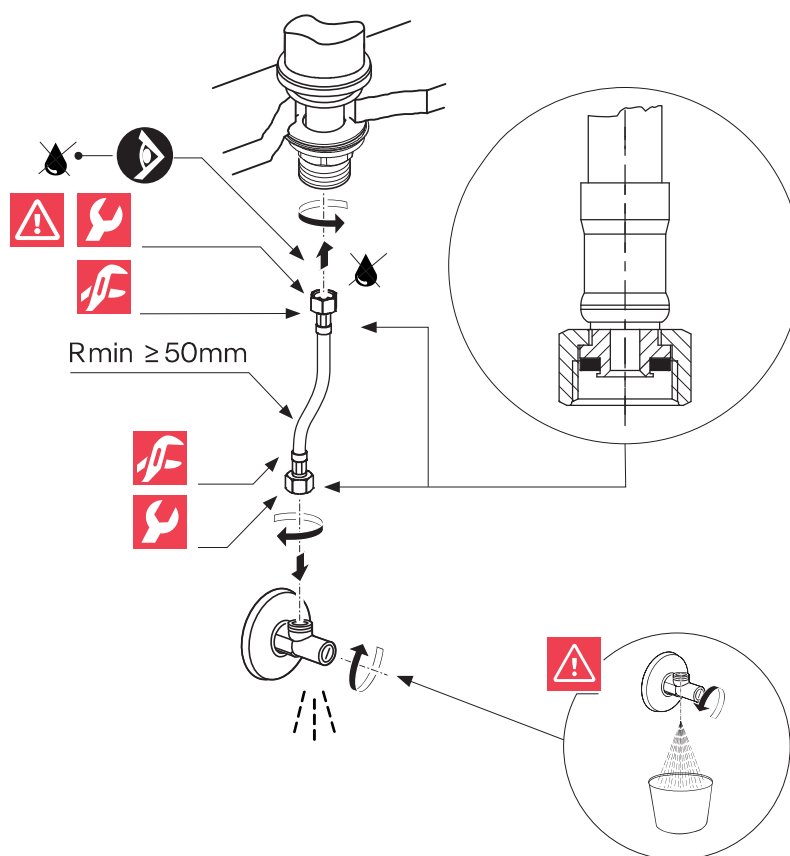
A

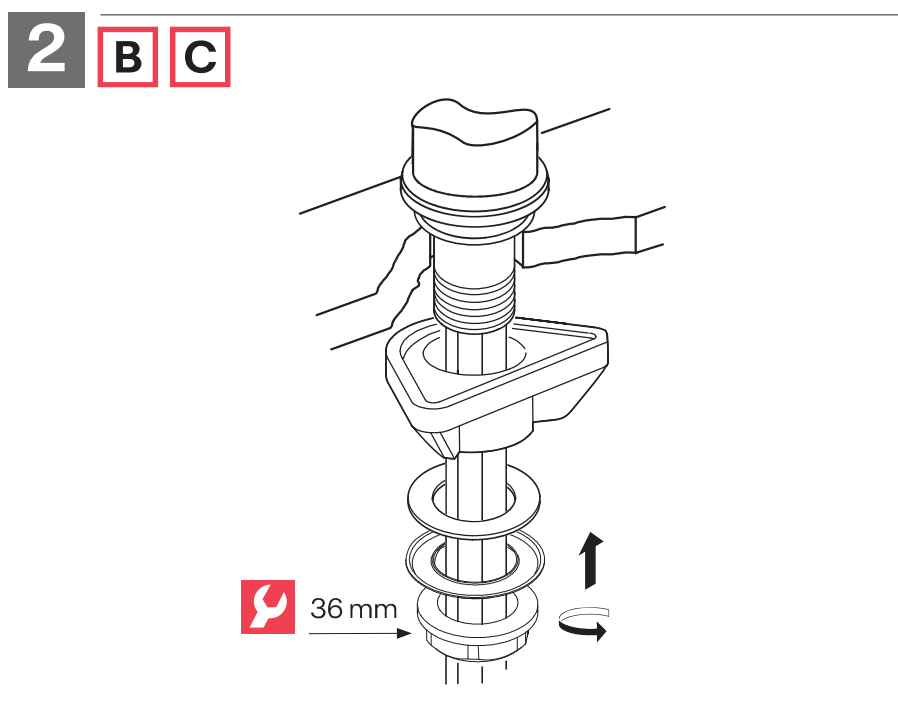
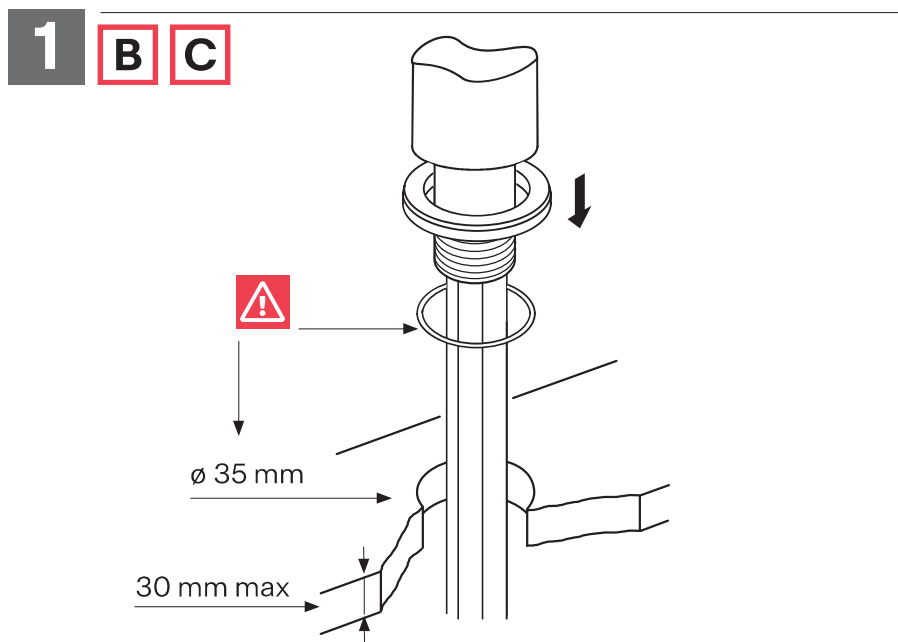


2

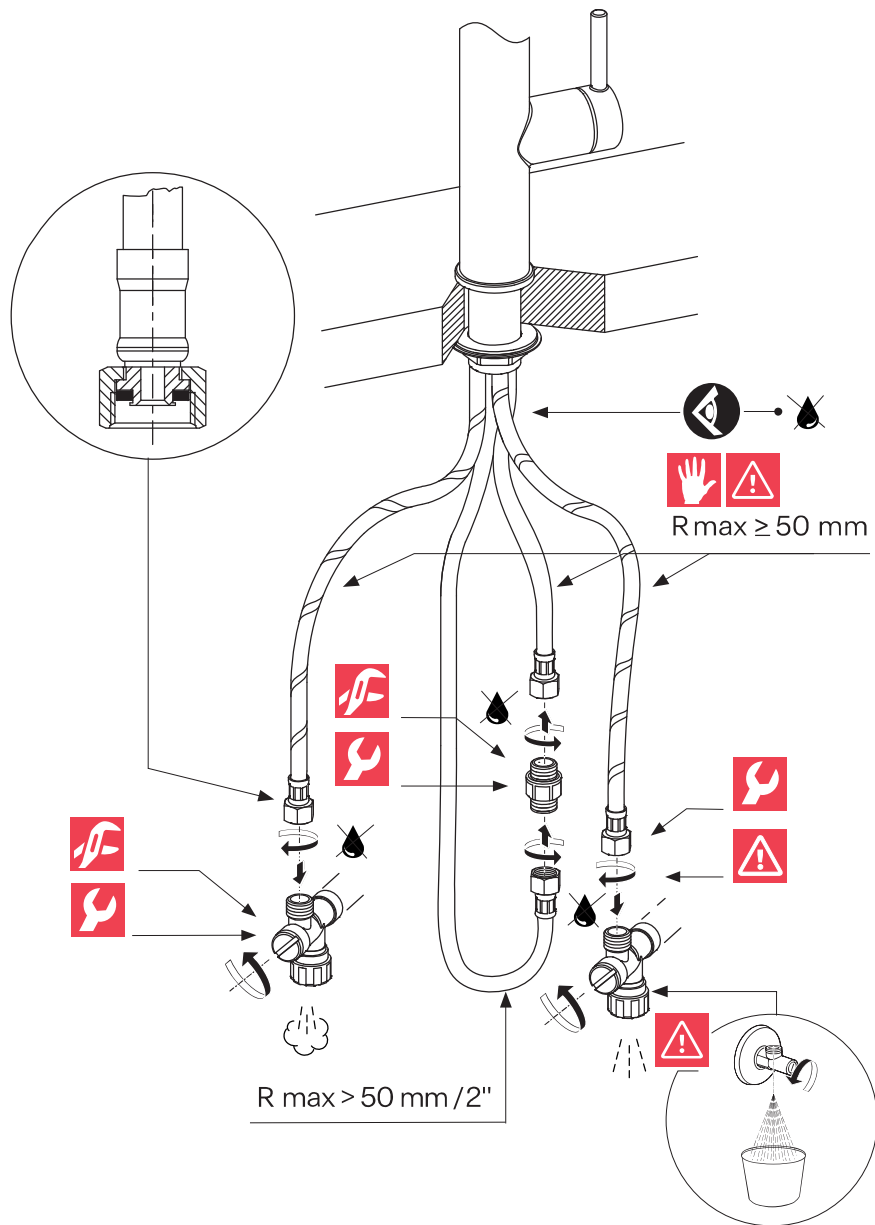
A

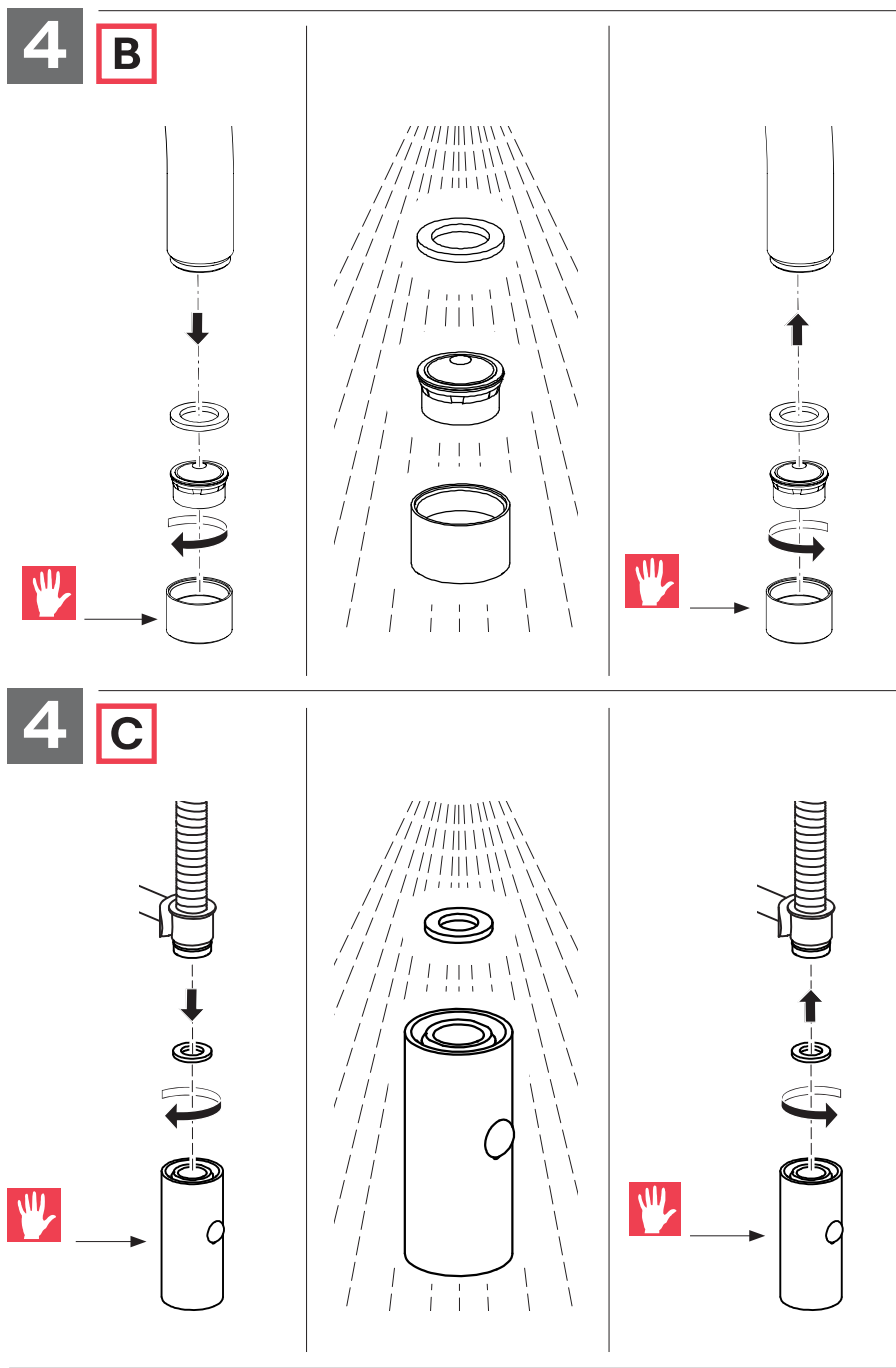


3**A**



3 **B** **C**

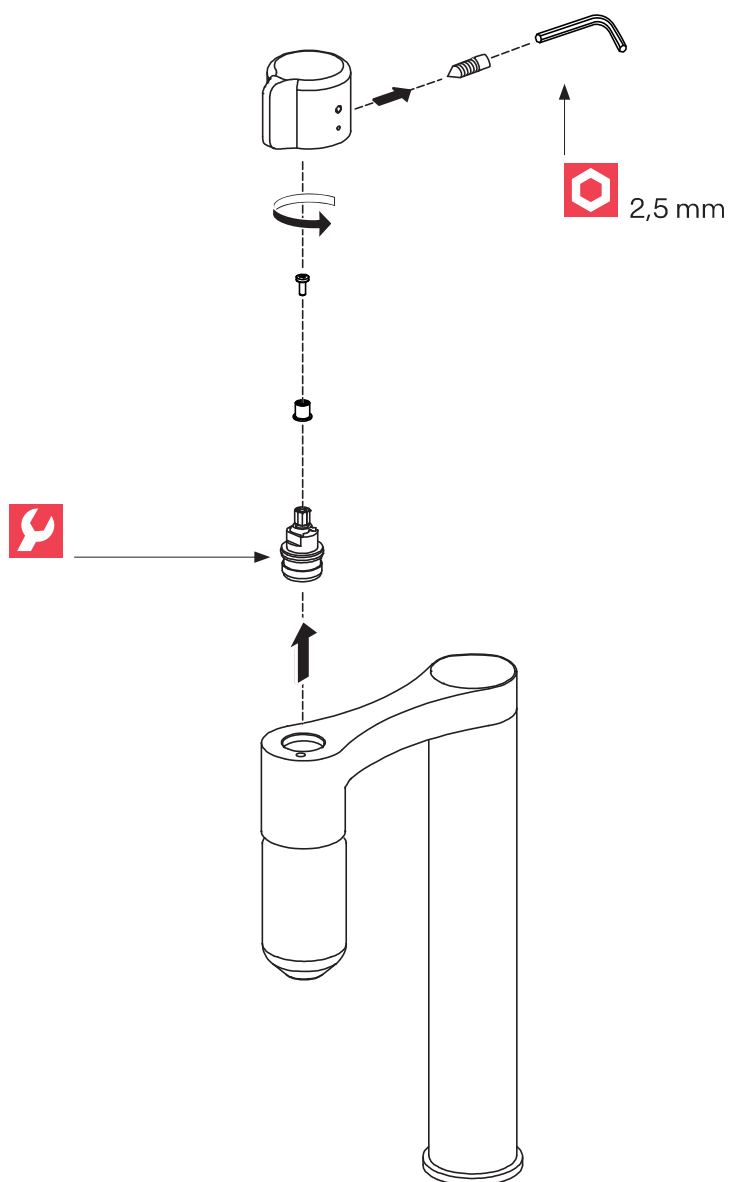




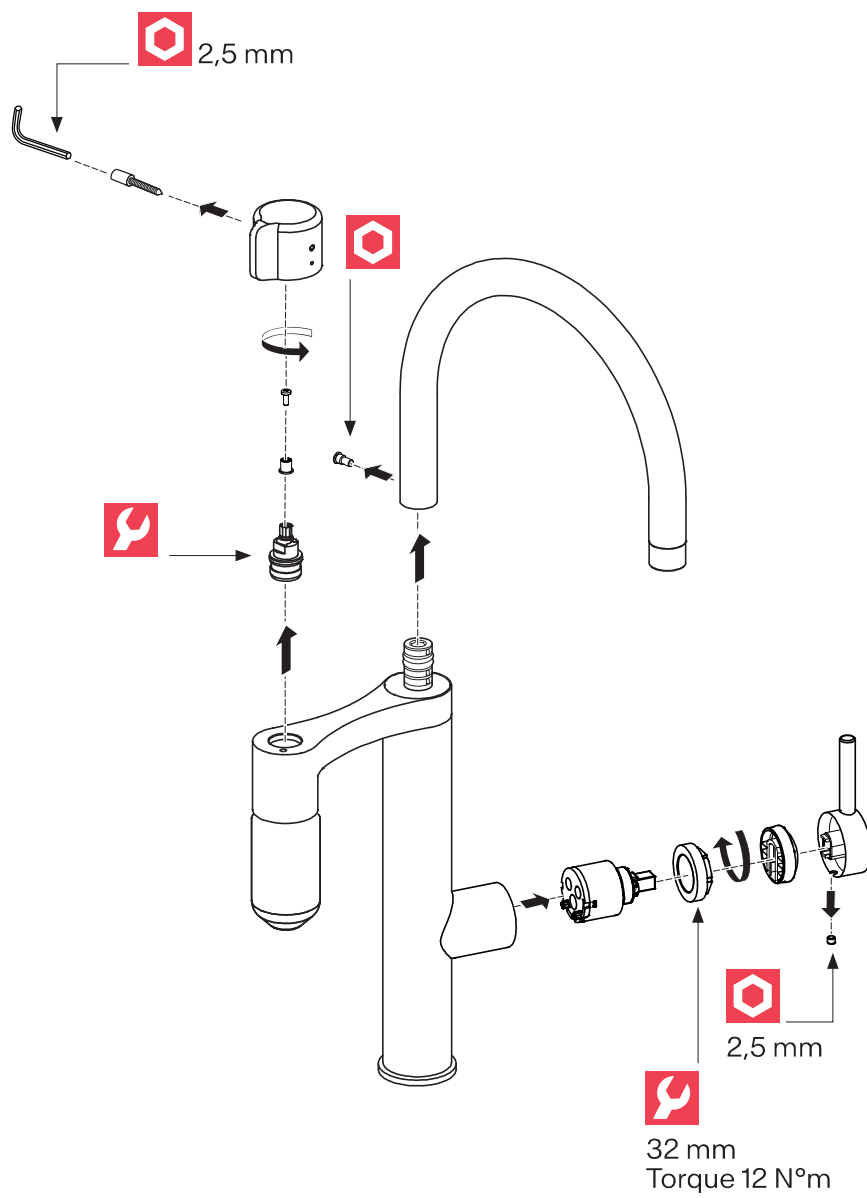


1

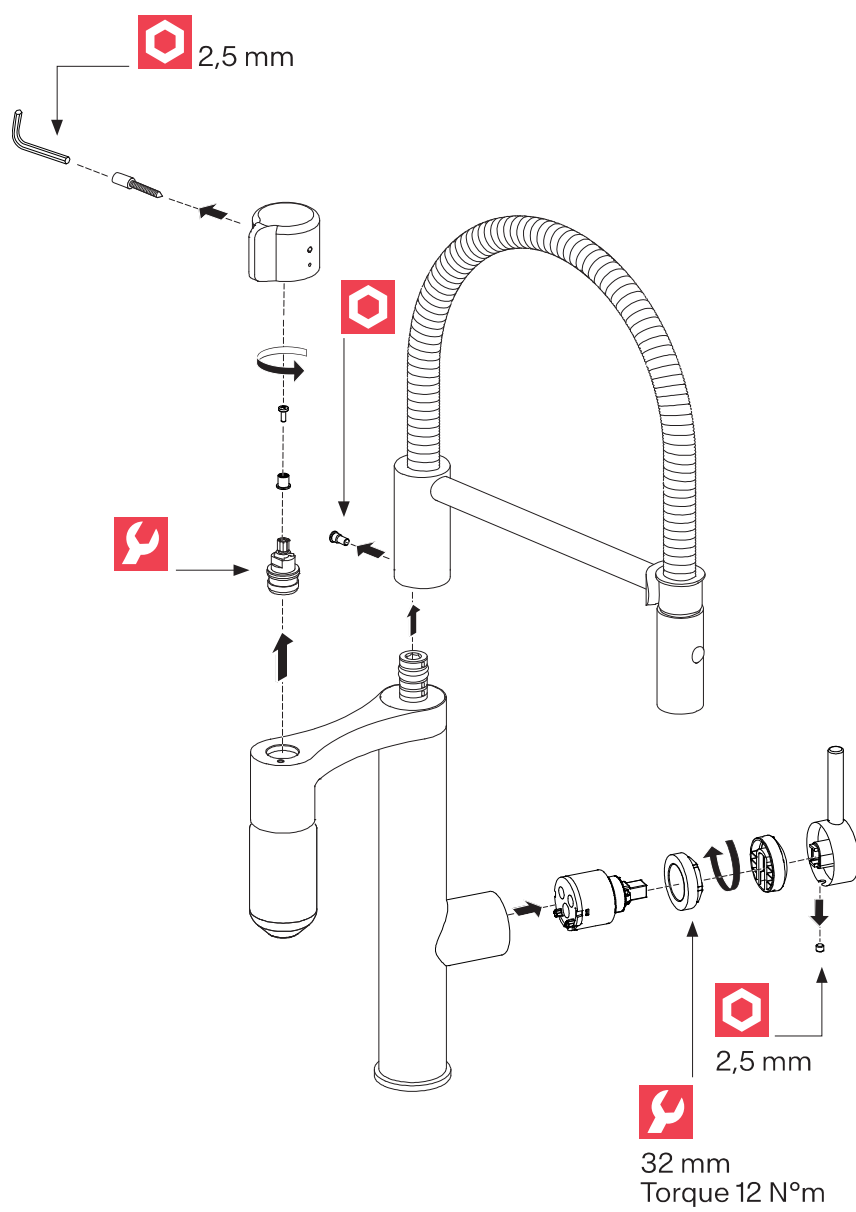
A



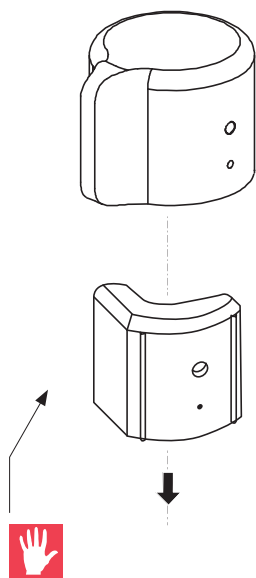
B



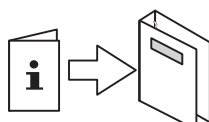
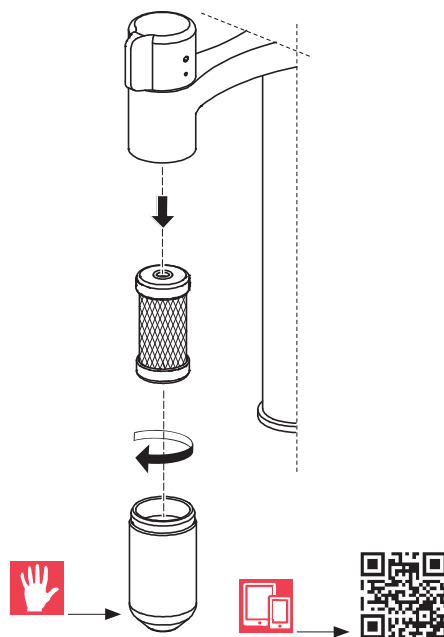
C



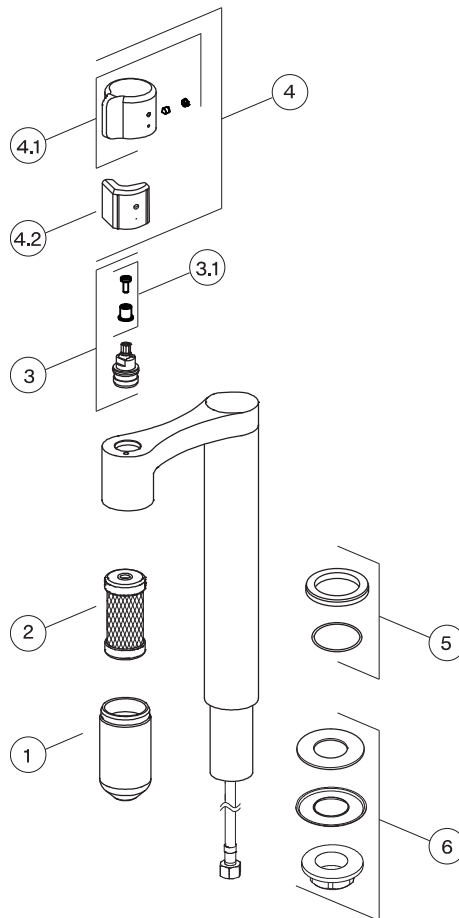
2 **A** **B** **C**

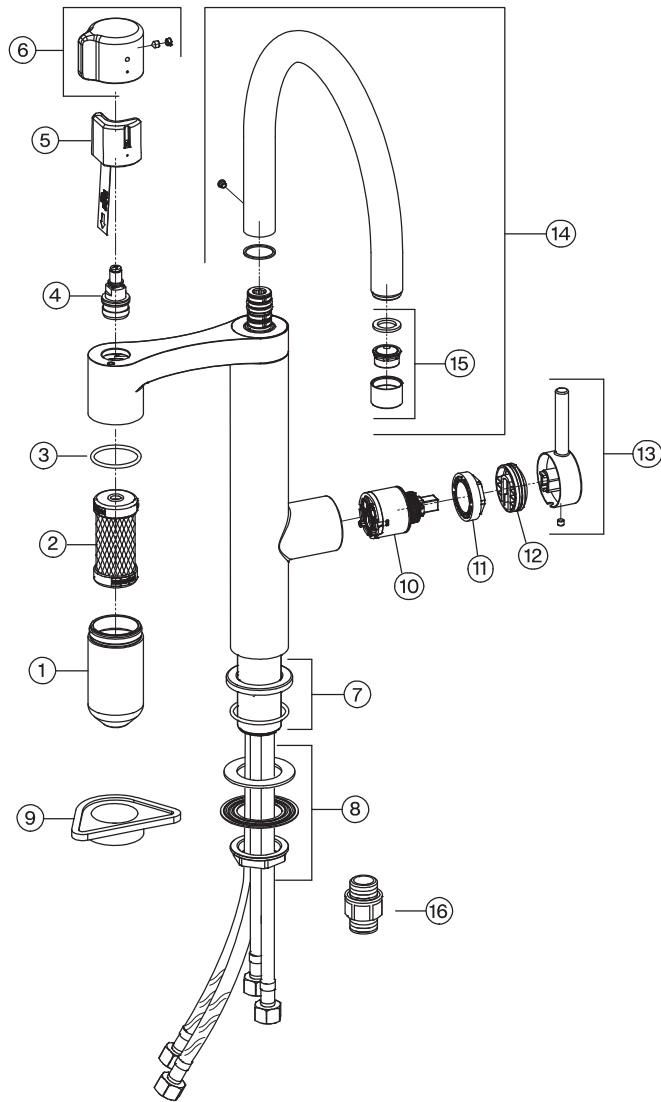


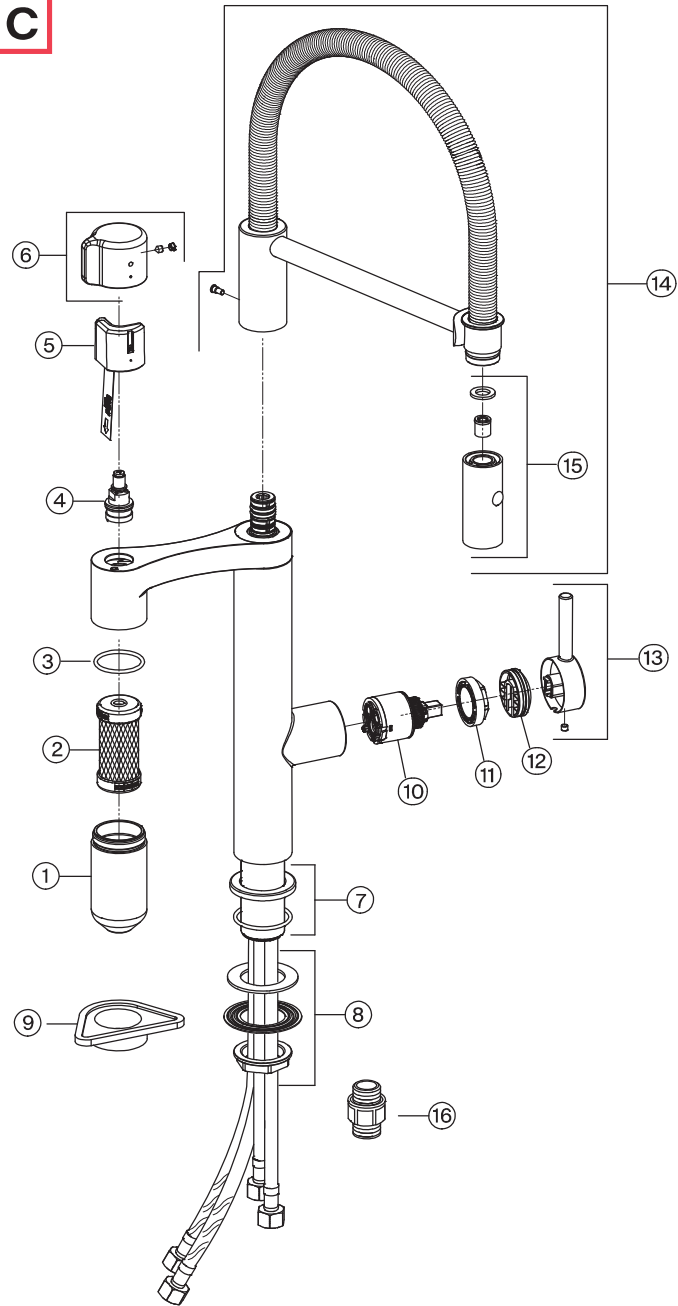
3 **A** **B** **C**



franke.com







Product Information

Capsule filter

- The Franke Filter Capsule is the first system of its kind to provide active carbon filtration with effective pre-filtration in such a compact and convenient format.

With the High-Performance Capsule Filter, it provides on top of it an outstanding 3 level filtration with a patented state-of-the-art membrane purification.

The water is filtered point-of-use to guarantee highest product safety and hygiene.

Operating data for Capsule Filter	Value	
Flow rate	@ 3 bar	3.5 L/ min
Pressure	2 bar	
Capacity	Up to 500 L	
Temperature range	5 °C	65 °C

Filter cartridge

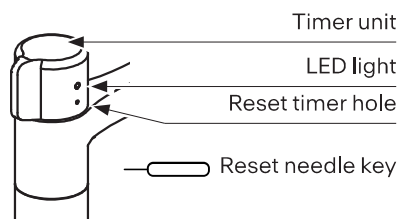
Water is filtered thanks to the patented filter technology. Bacteria, viruses, microplastics and microparticles, odors, pesticides and hormones are removed from the tap water during filtration process.

Switching on for the first time

Capsule filter

Before using Vital Capsule for the first time:

- ✓ Check if installation was done according to the manual.
- ✓ Check that water supply to the system is turned ON.
- ✓ Check the filter spout to be without a filter inserted.
- ▶ Open the water on the filter faucet and let it run without a filter for 4 to 5 minutes. This step is very important to empty the house water supply system from construction contaminations!
- ▶ Take the filter out of the plastic and enter it in the housing nose (with the twin system: check if it is the right filter).
- ▶ Screw the housing nose on (if you turn it first a half a turn left before closing right, it will be easier).
- ▶ Take the battery protecting flag out to activate the battery.
- ▶ Activate the electronic with the reset needle by pressing for about 3 or 4 seconds.
- ▶ Led light will blink: green, green, green indicating that system is ready. Then light will turn off.
- ▶ Turn on the faucet to flush the new filter for 30 seconds to remove any carbon dust and activate the filter (see page 5/1 ABC).
- ▶ Filtration is ready.



Operation

Capsule Filter status indication

Filter status indication is timer based.
LED light shows if filter is working or
if battery and/ or filter cartridge need
to be replaced.

Status indication	LED light appearance	User Action
Filter working	ON/ OFF green light	-
About 450 L	Light turns red when ON/OFF	Prepare/ purchase new filter cartridge
About 500 L	LED blinks red when ON/OFF	Replace filter cartridge
New battery needed	LED light will blink green and red ON/ OFF until timer unit is replaced	Replace timer unit or battery
During resetting timer During first installation	LED light will blink green, green, green	-

Maintenance

Replacing timer unit

- ▶ See page 14/2 ABC.
- ▶ Repeat steps from paragraph **First installation** to reset LED.

Replacing filter cartridge and resetting timer

Filter must be replaced after 500 L of water. After replacing filter cartridge, reset timer.

- ▶ To replace filter cartridge refer to illustration on page 14/3.
- ▶ To reset timer for 3 seconds push button inside reset timer hole. LED light will blink 3 times. After LED light turns OFF, system is ready.

Periodic checks

- ▶ Check connection and shower hoses periodically for the following:
 - Watertightness
 - Corrosion
 - Mechanical damage.
- ▶ Use original spare parts only.
- ▶ Replace damp or dripping hoses. Replace hoses with rusty or oxidized surfaces.
- ▶ Replace hoses that show signs of mechanical damage.
- ▶ Flush all pipes thoroughly before re-installation.

Operating data	Value		
Operating pressure (ideal)	3 bar	45 PSI	300 kPa
Operating pressure (max.)*	5 bar	70 PSI	500 kPa
Operating pressure (min.)*	1 bar	14,5 PSI	100 kPa
Water temperature (ideal)	60 °C	140 °F	
Water temperature (max.)	80 °C	180 °F	

* Equal pressure is recommended.

franke.com



United Kingdom

Franke UK Ltd.
Manchester M22 5WB
Phone +44 161 436 6280

© Fran Te n o y and ademark Ltd. Switzerland 2022-10-25 V 4 D: 2 32 54