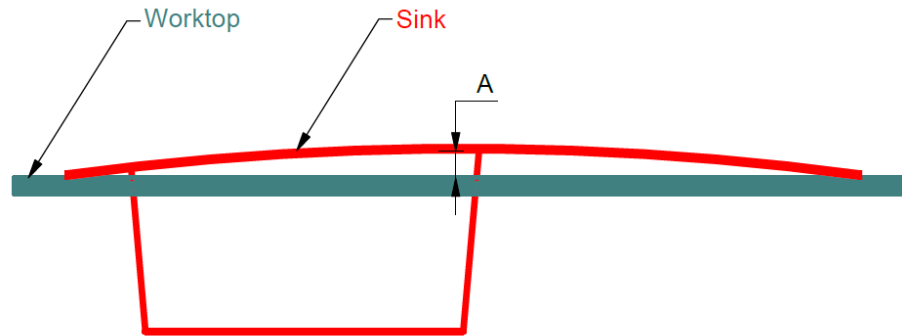
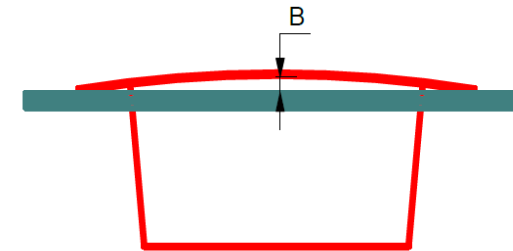


# Sink bowing measurement

Inset and Flushmount installation – maximum acceptable values in mm



Long side measurement



Short side measurement

	Sink type	Inset incl. Easy Flushmount installation			
		Sink length			
		< 500 mm		> 500 mm	
		A	B	A	B
One/one & half bowl sink with drainer	611/651	Not existing		3 mm	2 mm*
Double bowl sink with drainer	621				
One bowl sink w/o drainer	610	1 mm		2 mm	1 mm
Double bowl sink w/o drainer	620	Not existing			

\* short side w/o fixation - maximum acceptable bowing 1 mm

	Sink type	Flushmount installation			
		Sink length			
		< 500 mm		> 500 mm	
	↓	A	B	A	B
One/one & half bowl sink with drainer	211/251	Not existing		2 mm*	
One bowl sink w/o drainer	210	1 mm		2 mm	1 mm
Double bowl sink w/o drainer	220	Not existing			

\* sink w/o fixation - maximum acceptable bowing 1 mm

# Sink bowing measurement

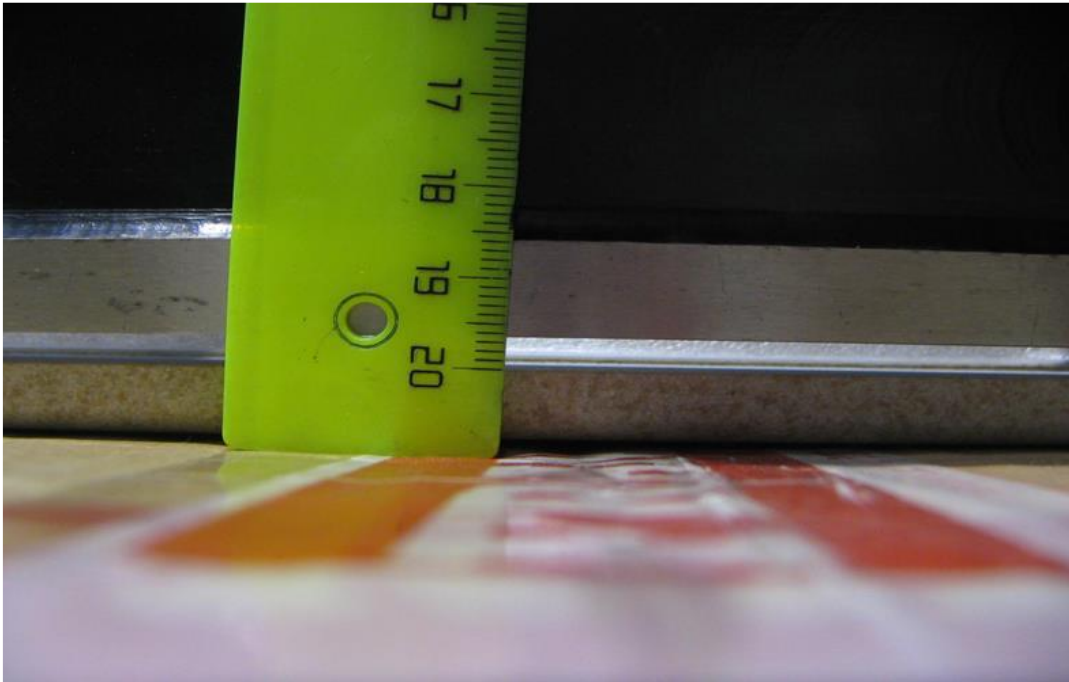
How to measure sink bowing?



The measurement must be carried out on an absolutely flat surface.

# Sink bowing measurement

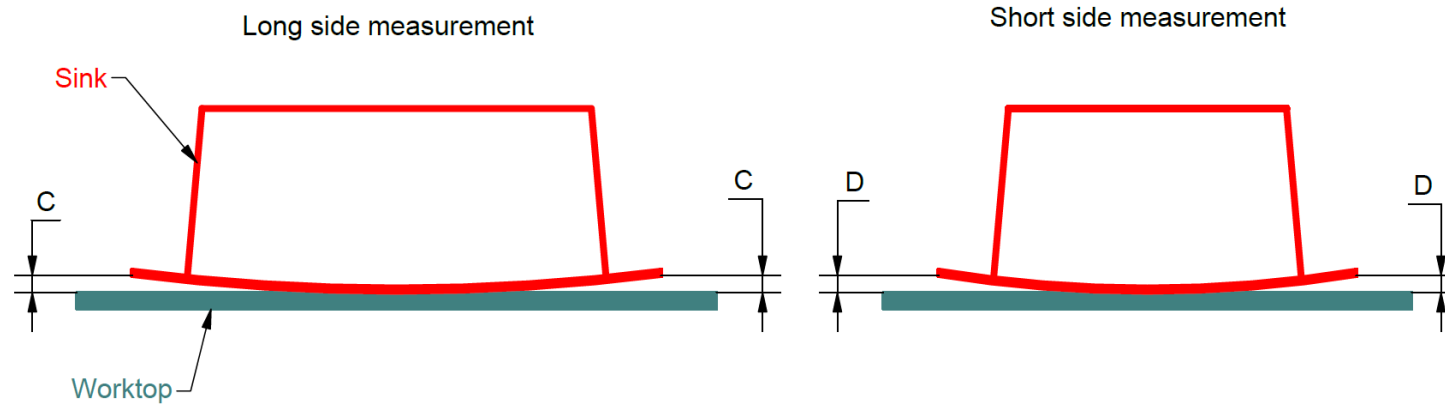
How not to measure sink bowing.



Do not measure bowing using rulers or any other unprecise measuring tools.

# Sink bowing measurement

Undermount installation – maximum acceptable values in mm



		Sink type	Undermount installation			
			Sink length			
			< 500 mm		> 500 mm	
			C	D	C	D
One/one & half bowl sink with drainer	111	Not existing		2 mm		
One bowl sink w/o drainer	110	1 mm				
Double bowl sink w/o drainer	120	Not existing				