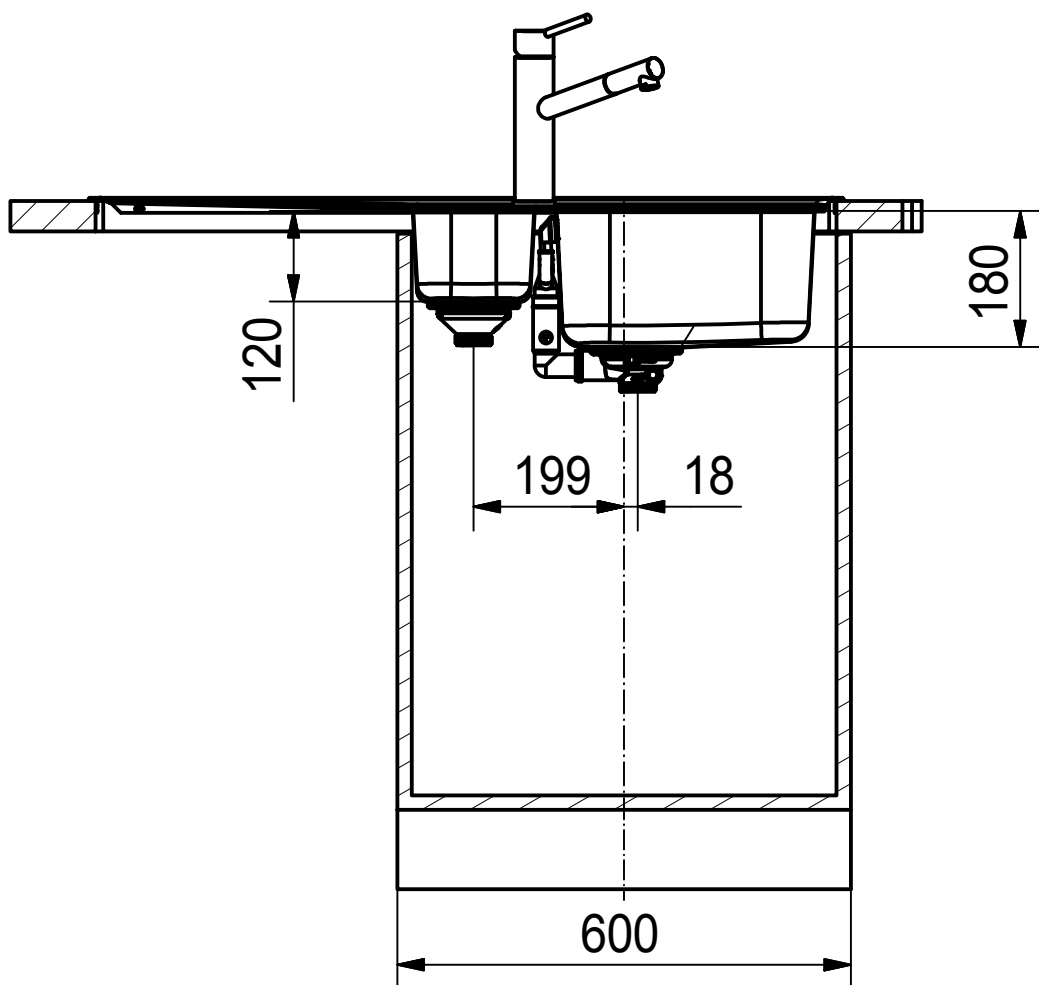


DF



Drawing No.	0056-203074	Revision	E
Drawn Date	28.06.2013		
These drawings and specifications are the property of Franke Technology and Trademark Ltd. and shall not be reproduced, copied or transferred to any third party without the prior written permission of Franke Technology and Trademark Ltd., Hergiswil, Switzerland			

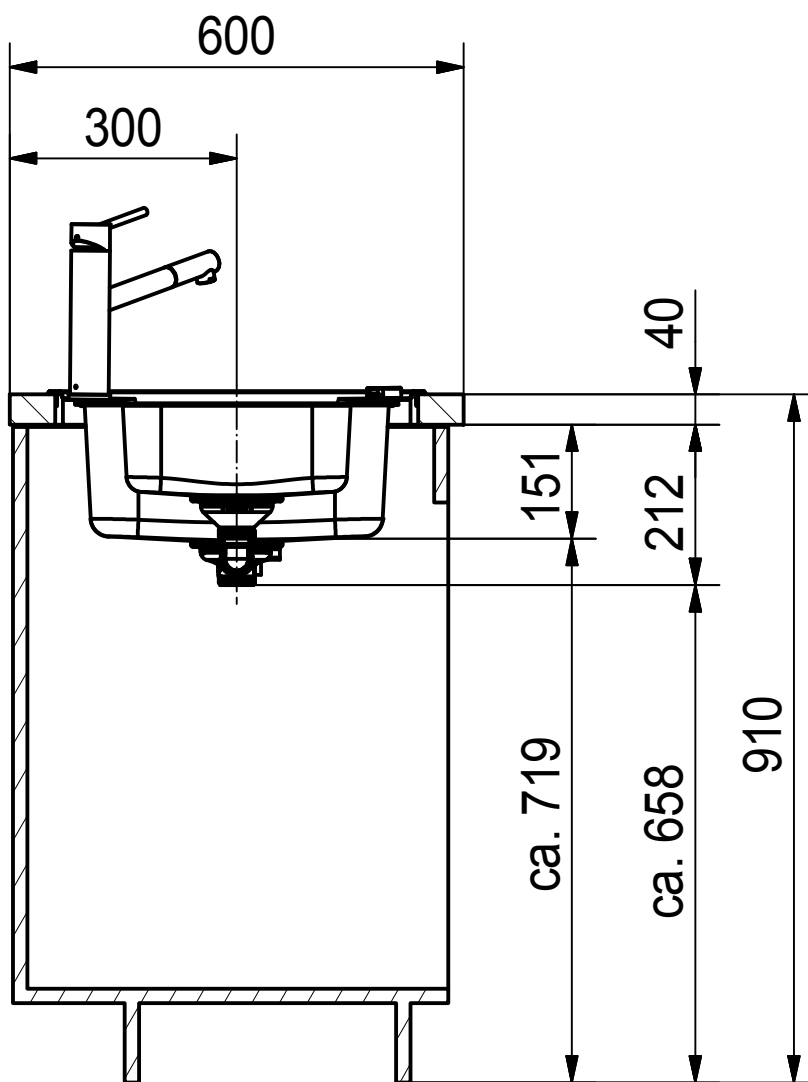
Franke Küchentechnik AG
CH-4663 Aarburg
Phone: +41 62 787 31 31
Internet: www.franke.com

SRX 651 Rev SI

installing document

Sheet	Sheets
1	6

DS



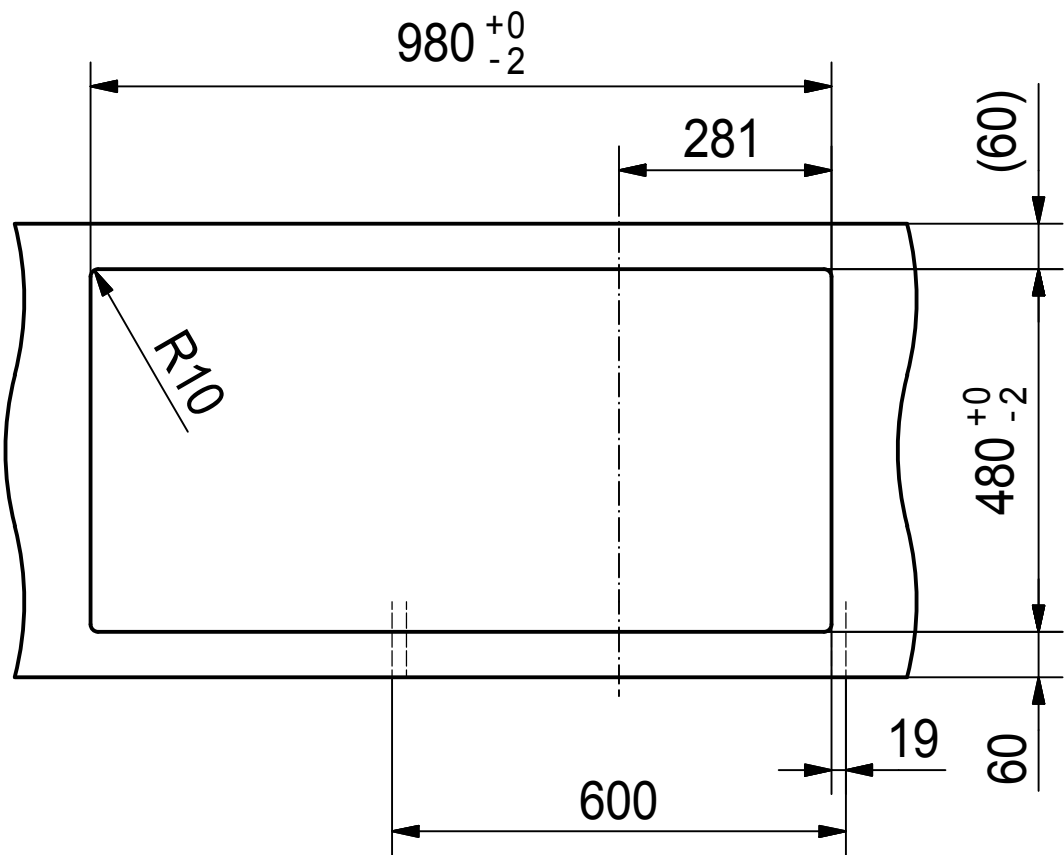
Drawing No.	0056-203074	Revision	E
Drawn Date	28.06.2013		
These drawings and specifications are the property of Franke Technology and Trademark Ltd. and shall not be reproduced, copied or transferred to any third party without the prior written permission of Franke Technology and Trademark Ltd., Hergiswil, Switzerland			

Franke Küchentechnik AG
CH-4663 Aarburg
Phone: +41 62 787 31 31
Internet: www.franke.com

SRX 651 Rev SI

installing document

Sheet	Sheets
2	6



Drawing No.	0056-203074	Revision	E
Drawn Date	28.06.2013		
These drawings and specifications are the property of Franke Technology and Trademark Ltd. and shall not be reproduced, copied or transferred to any third party without the prior written permission of Franke Technology and Trademark Ltd., Hergiswil, Switzerland			

Franke Küchentechnik AG
CH-4663 Aarburg
Phone: +41 62 787 31 31
Internet : www.franke.com

SRX 651 Rev SI
installing document

Sheet	Sheets
3	6



Drawing No.	0056-203074	Revision	E
Drawn Date	28.06.2013		
These drawings and specifications are the property of Franke Technology and Trademark Ltd. and shall not be reproduced, copied or transferred to any third party without the prior written permission of Franke Technology and Trademark Ltd., Hergiswil, Switzerland			

Franke Küchentechnik AG
CH-4663 Aarburg
Phone: +41 62 787 31 31
Internet : www.franke.com

SRX 651 Rev SI

installing document

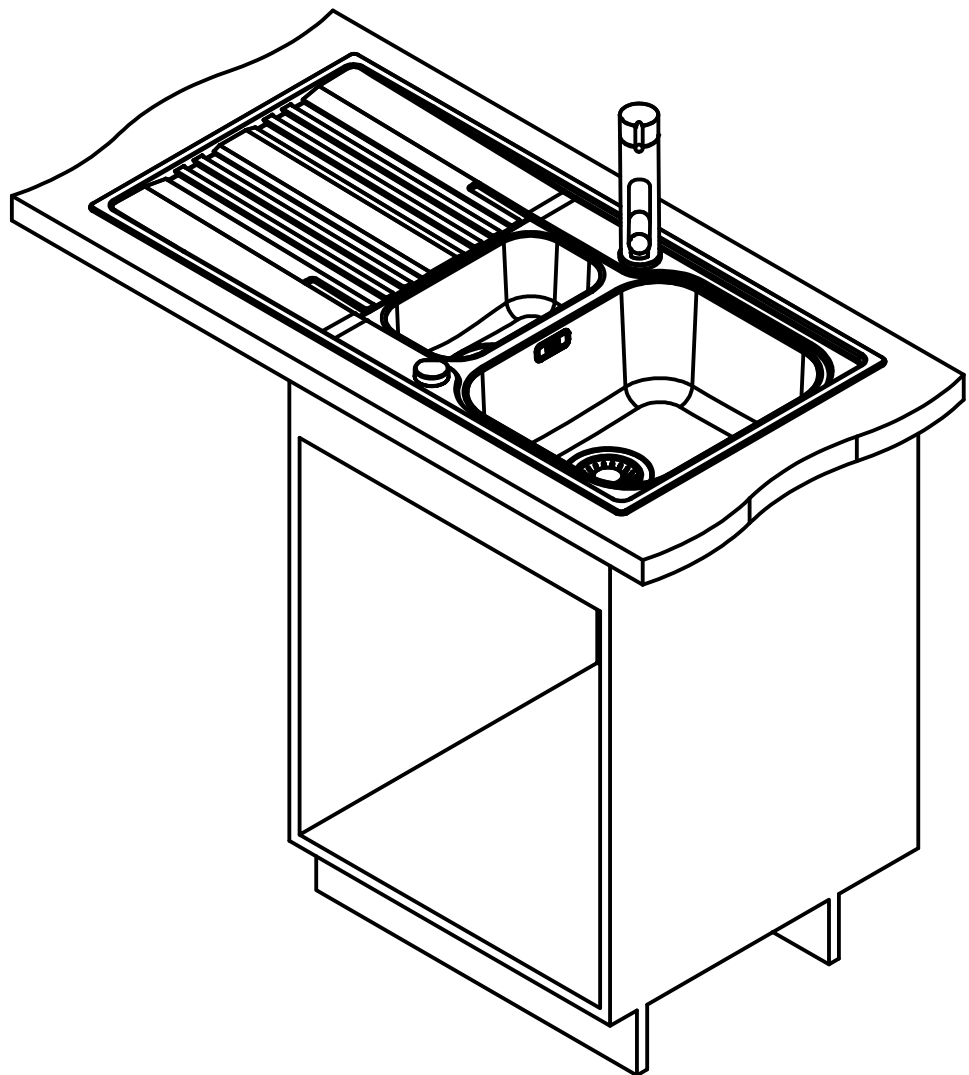
Sheet	Sheets
4	6

DT

Technical drawing of the SRX 651 Rev SI installing document, showing a top view of a rectangular unit. The drawing includes the following dimensions and features:

- Overall width: 1000
- Overall height: 500
- Left side height: 55
- Top right corner radius: R10
- Internal width segments: 160 and 340
- Internal height segments: 300 and 400
- Internal width segment: 410
- Internal height segment: 469
- Internal corner radius: R70
- Internal diameter: $\varnothing 35$

Drawing No.	0056-203074	Revision	E	Franke Küchentechnik AG CH-4663 Aarburg Phone: +41 62 787 31 31 Internet : www.franke.com	SRX 651 Rev SI installing document	Sheet	Sheets
Drawn Date	28.06.2013					5	6
These drawings and specifications are the property of Franke Technology and Trademark Ltd. and shall not be reproduced, copied or transferred to any third party without the prior written permission of Franke Technology and Trademark Ltd., Hergiswil, Switzerland							



Drawing No.	0056-203074	Revision	E
Drawn Date	28.06.2013		
These drawings and specifications are the property of Franke Technology and Trademark Ltd. and shall not be reproduced, copied or transferred to any third party without the prior written permission of Franke Technology and Trademark Ltd., Hergiswil, Switzerland			

Franke Küchentechnik AG
 CH-4663 Aarburg
 Phone: +41 62 787 31 31
 Internet : www.franke.com

SRX 651 Rev SI

installing document

Sheet	Sheets
6	6