



FRANKE

HEALTHCARE

Plumbing Fixtures and Accessories

HAND HYGIENE SOLUTIONS FOR HEALTHCARE

CONTENTS

- 01 Designed to meet your every requirement
- 02 Solutions for every healthcare space
- 04 Nightingale collection
- 08 Medi-flo
- 12 Ozo-flo
- 14 Clinical wash basins
- 18 Dual mount hand wash sinks
- 19 EZ Torque™ saves time on the job
- 20 Surgical scrub stations
- 24 Type 316 lab sinks
- 26 Cafeterias and kitchens
- 28 Mop and janitorial
- 30 Wall carriers and accessories
- 32 Antimicrobial nanocoating
- 33 White solid surface sinks
- 34 Commercial facility solutions
- 38 Contact Us



Designed to meet your every requirement

At Franke, we have been looking for new solutions and innovations for over 100 years and our attitude still has not changed. In 1911 we combined traditional craftsmanship, precision engineering, and a constant pursuit of innovation, three principles that remain at our core.

Design

We design and engineer aesthetically attractive washroom solutions as well as innovative products for healthcare, education, industrial, and transportation.



Quality

Continuous improvement to our products and processes keeps us striving for excellence. Franke proudly stands behind every product we make.



Manufacturing

Franke has been manufacturing stainless steel sinks for over 100 years. Our superior buying power and control over manufacturing enables supply of products in a timely manner.

Service

Questions about our product? Our North American customer service team is ready to assist.



Solutions for every healthcare space

Franke Commercial concentrates on intelligent fixtures for sanitary facilities in every type of healthcare space. Hospitals and patient care facilities require specially-designed hand hygiene fixtures that guard against splashing and eliminate areas on which bacteria can grow. Infection control and optimal hand hygiene are key to keeping vulnerable patients safer.



Our engineers develop healthcare solutions that improve the safety and effectiveness of hand washing for staff, patients, and visitors.



Proper hand hygiene is key in healthcare spaces

Specialized fixtures that combat biofilm and help keep patients and staff safer.

Patient room sinks with infection-control splash reduction features built in.

Maximum reliability with minimal maintenance makes for smart fixture choices.



Nightingale Collection



Safer hand hygiene

Infection prevention meets smart design. The Nightingale series by Franke is engineered for the unique needs of North American healthcare facilities. From patient rooms to intensive care units, nurses stations and treatment rooms, choose Nightingale healthcare sinks for optimal hand hygiene. Functional, wheelchair accessible, and built-in splash control.

Wheelchair accessible

Meets all wheelchair accessibility standards across North America.

Solid surface material

Glossy white, non-porous, solid surface material is warm to the touch and easy to clean.

Offset drain

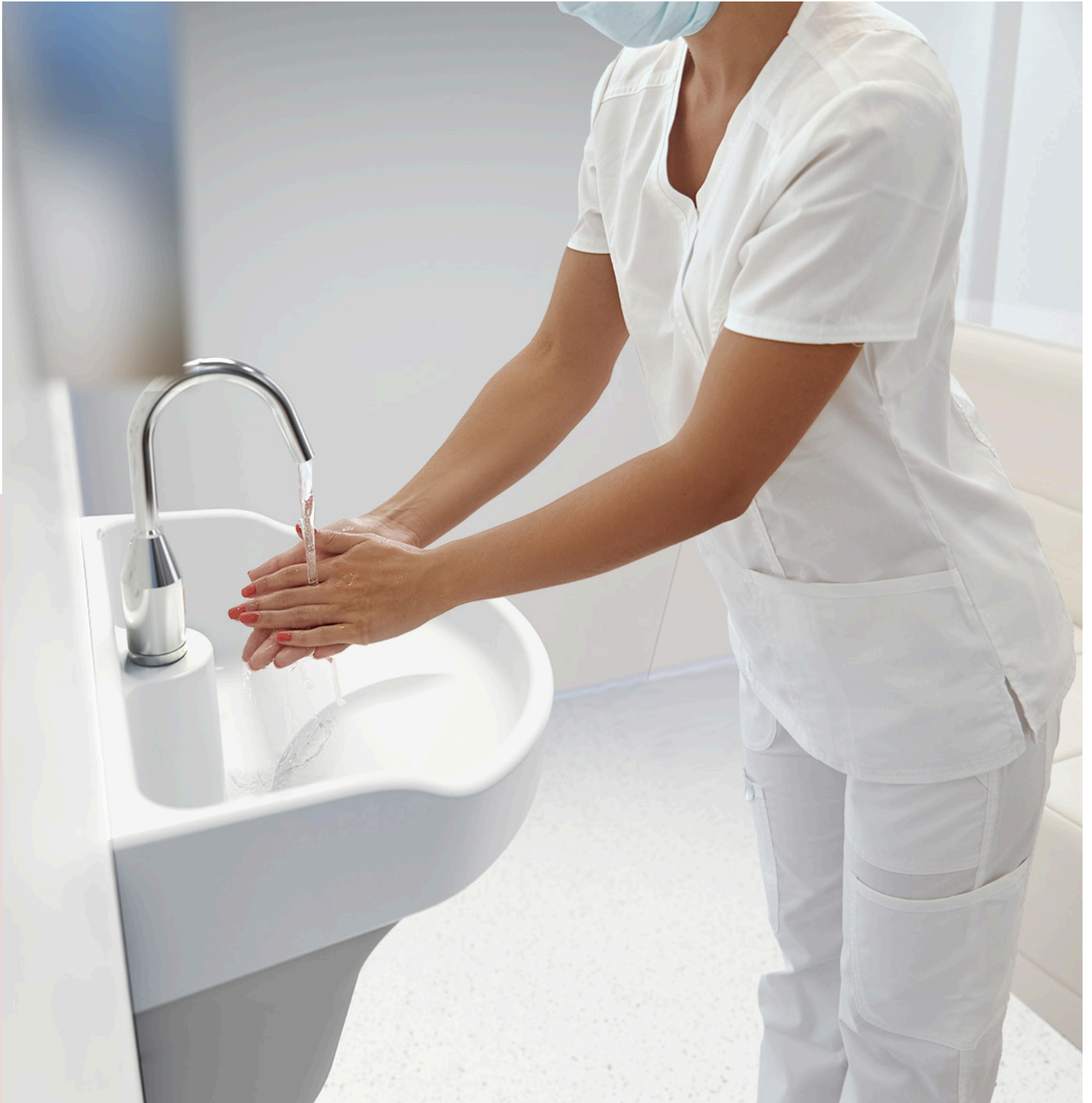
The placement of the waste in the rear corner eliminates splashing from the drain.

Designed to virtually eliminate splashing

Center rib diverts water flow from faucet. All surfaces are sloped towards the drain, eliminating free-standing water.



Patient Room Sinks



Nightingale Elite Patient Room Hand Hygiene Sinks



Wheelchair accessible patient room sink
AHWSS2321WDM-00

Wall mount sink with removable shroud
Solid surface material with antimicrobial resin
Left rear waste, 1 1/2" diameter
Outside dimensions: 22 7/8 x 20 15/16 x 23 3/8"
Inside bowl: 25 5/8 x 17 1/2 x 9"



Wheelchair accessible patient room sink &
hands-free faucet
AHWSS2321WDM-G

Wall mount sink with removable shroud
Solid surface material with antimicrobial resin
Left rear waste, 1 1/2" diameter
Outside dimensions: 22 7/8 x 20 15/16 x 31 3/8"
Inside bowl: 25 5/8 x 17 1/2 x 9"

Nightingale Patient Room Hand Hygiene Sinks



Wheelchair accessible patient room sink
AHWSS1720W-00

Wall mount sink with removable shroud
Solid surface material with antimicrobial resin
Left rear waste, 1 1/2" diameter
Outside dimensions: 16 15/16 x 20 1/8 x 21 1/2"
Inside bowl: 15 1/4 x 18 5/8 x 9"



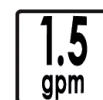
Wheelchair accessible patient room sink &
hands-free faucet
AHWSS1720W-G

Wall mount sink with removable shroud
Solid surface material with antimicrobial resin
Left rear waste, 1 1/2" diameter
Laminar flow faucet 1.5 gpm / 6.0 Lpm
Outside dimensions: 16 15/16 x 20 1/8 x 30 3/8"
Inside bowl: 15 1/4 x 18 5/8 x 9"



Wheelchair accessible patient room sink &
hands-free faucet
AHWSS1720W-T

Wall mount sink with removable shroud
Solid surface material with antimicrobial resin
Left rear waste, 1 1/2" diameter
Laminar flow faucet 1.5 gpm / 5.7 Lpm
Outside dimensions: 16 15/16 x 20 1/8 x 26"
Inside bowl: 15 1/4 x 18 5/8 x 9"



ADA Compliant: Products are compliant with the American Disabilities Act when properly installed, ANSI A117.1 and CSA B651-04. Check local codes to ensure compliance.
Sink is cUPC certified and compliant with CSA B45.5-11 / IAPMO Z124-2011. Meets and exceeds various national healthcare standards; ie, CSA Z8000, CSA Z317.1-16.
Faucets are certified to ASME A112.18.1 / CSA B125.1

Medi-flo ozone technology



Using science for hand hygiene

Ozone Technology: Using a specialized type of electrolysis, Medi-flo reconstitutes the incoming water molecules into mixed oxidants, including dissolved ozone. Ozone is an oxidizer and a powerful natural disinfectant: more than twice as effective as bleach, eradicates bacteria 3,000 times faster than bleach, is non-toxic and eco-friendly. Ozonated water is generated on demand since ozone molecules only remain active for a short time and, therefore, cannot be stored.

Splash reduction features

Center rib diverts water flow from faucet.
Side splashes keep water inside the sink.

Laminar flow stream

Water molecules flow in a straight line,
virtually hugging the hands as you wash.

Integral waste, offset drain

The placement of the waste in the rear
corner eliminates splashing from the
drain.

Wheelchair accessible

Medi-flo is accessible to all. Meets all
wheelchair accessibility standards
across North America including ADA.



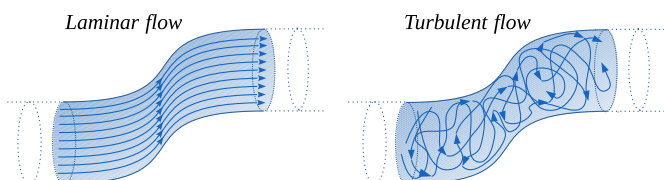
Splash reduction for safer hand hygiene

Sink wastes and P-traps are a breeding ground for dangerous and harmful bacteria and have been the source of deadly hospital outbreaks. With the release of the Z8000 standards in 2011, the Canadian Standards Association (CSA) clearly defined specifications for the design and construction of hospitals and other healthcare facilities to increase health and safety and limit the spread of illness. Medi-flo sinks are engineered to reduce splash, virtually eliminating the possibility of water splashing out of the drain and onto patients, staff, and nearby surfaces.

Go with the (laminar) flow

Laminar flow spout reduces splashing

Laminar flow does not merely indicate the absence of aeration. In a true laminar flow stream the fluid particles move in an orderly, straight line. When laminar flow is achieved, the stream is turbulence-free and splashing is dramatically reduced. Additionally, the water stream can transmit light, similar to a fiber optic cable.



Efficacy of electrochemical water disinfection

Pathogen	Efficacy	Contact time	Source
Candida auris	99.9%	10 minutes	Cleveland VA Medical Center
C. difficile spores	64%	20 seconds	EMSL Canada Inc.
Klebsiella pneumoniae	99.99%	30 seconds	EMSL Canada Inc.
Legionella pneumophila	99.99%	5 minutes	EMSL Canada Inc.
MRSA	99.9%	10 minutes	Cleveland VA Medical Center
Pseudomonas	99.9%	10 minutes	Cleveland VA Medical Center


Efficacy studies performed by 3rd party laboratories show that electrochemical water disinfection can be effective at reducing certain waterborne pathogens.

ADA Compliant: Products are compliant with the American Disabilities Act when properly installed, ANSI A117.1 and CSA B651-04. Check local codes to ensure compliance.
Sink is cUPC certified and compliant with CSA B45.5-11 / IAPMO Z124-2011. Meets and exceeds various national healthcare standards; ie, CSA Z8000, CSA Z317.1-16.
Faucets are certified to ASME A112.18.1 / CSA B125.1

Medi-flo delivers

Cutting edge technology combined with elegant, functional design makes hand washing a wonderful experience and helps stop the spread of infections. Ozonated water has been proven as a safe and effective way to help sanitize the sink and waste. Ozonated water flows from the integral spout at 1.5 gpm / 6.0 Lpm for fast, effective hand washing. An elegant sink made from a solid surface material with antimicrobial resin that's easy to clean and warm to the touch.

SPLASH CONTAINMENT

- 
- ❶ Sink bottom sloped positively to be free draining and eliminate pooling.
 - ❷ Integral centre rib helps divert water to prevent splashing.
 - ❸ 9" [229mm] deep, rounded inner bowl helps contain splashing within the unit, providing staff and patients with a safe contact surface.

ACCESSIBLE

- ❹ Wheelchair accessible design. The shroud serves to protect the knees of people using a wheelchair, and conceals plumbing connections.

ATTRACTIVE DESIGN

- ❺ Gently contoured features invoke a residential feel and quickly direct water into the seamless waste.

Wheelchair accessible patient room sink for infection control, integral laminar flow spout
HWSS2321W-00

Ozone and mixed oxidants generator included, concealed behind shroud
Left rear waste, 1 1/2"
Exterior Dimensions: 20 15/16 x 22 1/8 x 23 3/8"
Inside bowl: 17 3/8 x 21 5/8 x 9"

Ozo-flo Retrofit Ozone Faucets



Safe, effective infection control

Ozo-flo faucets dispense germ-eradicating water on-demand. Creating ozone at point of use is imperative since ozone reverts to its simple water state within a short time. The remaining mixed oxidants continue working, but they too dissipate over time. Provide safe, effective hand washing for peace of mind for your staff, patients, and community.

Retrofit onto existing hand wash sink

A simple installation. Mount onto existing sink, mount the wall housing and plug into a nearby power supply.

Biofilm-free sink drain

Ozonated water helps sanitize the sink and waste, effectively eliminating harmful bacteria above the P-trap.

Laminar flow stream

True laminar flow means a turbulent-free stream of water, resulting in a nearly splash-free hand washing experience.

Wall-mounted housing

Ozone and mixed oxidants are created on-demand by an electrochemical process inside a compact wall-mounted housing.



Clinical Wash Basins



Safer hand hygiene

Intensive care units are the heart of every healthcare facility. They're also a key location in the battle to control infection.

Placing properly designed, Z8000-compliant hand wash basins provide protection for vulnerable ICU patients, staff, and visiting families.

High back and side splashes

Meets and exceeds stringent healthcare design specifications by keeping splashing from hand washing inside the sink.

Radius coved corners

Inside corners are rounded to facilitate easy cleaning. The offset, 1 ½" open waste is smooth and seam-free.

Offset drain

The placement of the waste eliminates splashing from the drain.

All new antimicrobial nanocoating

Antimicrobial surface nanocoating helps stop the reproduction of bacteria that come in contact with sink surfaces. Improved chemical resistance to common hospital disinfectants.



Clinical Wash Basins





Clinical hand wash basin for splash mount faucet
HWSS1518P-00

18 gauge stainless steel with antimicrobial nanocoating on all exposed surfaces of the sink.
Constructed with integral shroud to hide plumbing.
Integral 1½" (38 mm) waste welded to bottom of the sink bowl, located in right rear corner.
Exterior dimensions: 18 x 15 x 28 5⁄8"



Clinical hand wash basin for deck mount faucet
HWS1420P-00

18 gauge stainless steel with antimicrobial nanocoating on all exposed surfaces of the sink.
Integral 1½" (38 mm) waste welded to bottom of the sink bowl, located in left rear corner.
Exterior dimensions: 19 3⁄16 x 21 x 37 15⁄16"



Clinical hand wash basin, splash or deck mount faucet
HWS1414P-00

18 gauge stainless steel with antimicrobial nanocoating on all exposed surfaces of the sink.
Integral 1½" (38 mm) waste welded to bottom of the sink bowl, located in left rear corner.
Exterior dimensions: 18 3⁄4 x 15 x 18 1⁄2"



Wheelchair accessible clinical hand wash basin
AWHB1414P-3

18 gauge stainless steel.
Wheelchair accessible: meets ADA, ANSI A117.1.
Integral 1½" (38 mm) waste welded to bottom of the sink bowl, located in left rear corner.
Exterior dimensions: 17 9⁄16 x 14 5⁄16 x 15 1⁄16"



Dual-mount hand wash sinks

Replacing a sink in a countertop in a healthcare space? Franke has the perfect solution. Robust, extra deep, 18 gauge stainless steel medical hand wash sinks with offset drains for added infection control. The bottom of the sink compartment is angled to reduce splashing. Both models are dual-mount, meaning they can be installed as undermount or topmount with our EZ Torque fastening system.





Dual mount medical hand wash sink
HWS0610P-3

18 gauge stainless steel
Sink compartment is angled to reduce splashing
and waste is offset to reduce the risk of any bacteria
contamination and splashing
Exterior dimensions: 12 ½ x 18 ¾ x 10"



Dual mount medical hand wash sink with faucet ledge
HWS6810P-3

18 gauge stainless steel
Sink compartment is angled to reduce splashing
and waste is offset to reduce the risk of any bacteria
contamination and splashing
Exterior dimensions: 21 ½ x 20 x 10"

EZ Torque™ Means Hassle-Free Installation



**Drop sink into
the countertop.**



**Tighten fasteners
to secure in place.**



Surgical Scrub Stations



Designed to protect

Protection for hospitals where it is needed most. When it comes to the OR and hospital procedure rooms, a sterile environment is a safe environment. Franke has specially designed scrub station sinks to meet the specific needs of the operating room. Larger fixtures allow surgeons, physicians, and nurses to conduct a thorough scrubbing up to the elbows before entering the operating theatre and coming into contact with patients, reducing the risk of post-procedure infections.

Superior hand hygiene

Generous sizing to ensure full and complete scrubbing up. All surfaces are sloped towards the drain.

Splash containment

Offset waste ensures flow from faucet does not splash into drain. Splash guards keeps surrounding areas clean.

Designed for real life

Access panels are removable for plumbing maintenance. Radius coved corners ensure easy cleaning.



Surgical scrub stations



Premium Surgical Scrub Sinks



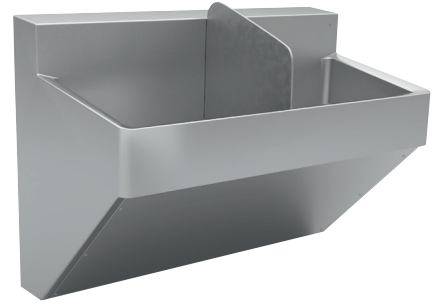
Single compartment
SSU1-2016-3

16 gauge stainless steel
Exterior dimensions: 19 3/4 x 16 x 28"
Compartment depth: 10"



Single compartment
SSU1-2020-3

16 gauge stainless steel
Exterior dimensions: 19 3/4 x 20 x 28"
Compartment depth: 10"



Double compartment
SSU2-2040-3

16 gauge stainless steel
Exterior dimensions: 19 3/4 x 40 x 28"
Compartment depth: 10"

Classic Surgical Scrub Sinks



Single compartment
SSU1-00

16 gauge stainless steel
Exterior dimensions: 23 x 30 x 26"
Compartment depth: Slopes from 10" to 12" right to left

Bundle with valve and faucet
SSU1-10

Sink bundle includes:
1 - SSU1-00 single compartment sink
1 - MIX-LF thermostatic mixing valve
1 - HHF180-6L hands-free faucet



Double compartment
SSU2-00

16 gauge stainless steel
Removable divider
Exterior dimensions: 23 x 60 x 26"
Compartment depth: Slopes from 12" to 14" right to left

Bundle with valves and faucets
SSU2-10

Sink bundle includes:
1 - SSU2-00 double compartment sink
2 - MIX-LF thermostatic mixing valves
2 - HHF180-6L hands-free faucets



Triple compartment
SSU3-00

16 gauge stainless steel
Removable dividers
Exterior dimensions: 23 x 90 x 26"
Compartment depth: Slopes from 10" to 14" right to left

Bundle with valves and faucets
SSU3-10

Sink bundle includes:
1 - SSU3-00 triple compartment sink
3 - MIX-LF thermostatic mixing valves
3 - HHF180-6L hands-free faucets

Type 316 Lab Sinks



Corrosion Resistant Type 316/316L

In the lab where corrosion-resistance is key, choose Franke Type 316/316L stainless steel sinks for the job. Molybdenum and chromium molecules work together to improve stainless steel's resistance to chlorides, cleaners, and harsh chemicals.



Topmount and undermount sinks in 18 gauge Type 316/316L stainless steel



S6808-316P-1
Topmount sink with no faucet ledge



LBD6408-316P-1
Topmount sink with faucet ledge

MODEL	FRONT-BACK	LEFT-RIGHT	DEPTH	MOUNTING TYPE	FAUCET LEDGE	NUMBER OF BOWLS
S9407-316P-1	11 5/8"	16 5/8"	7"	Topmount	No	One
S6407-316P-1	18 1/8"	16 1/8"	7"	Topmount	No	One
S6808-316P-1	18 1/8"	20 1/8"	8"	Topmount	No	One
S6810-316P-1	18 1/8"	20 1/8"	10"	Topmount	No	One
LBS9407-316P-1	14 5/16"	16 5/8"	10"	Topmount	Yes	One
LBS4607-316P-1	18 13/16"	18 1/8"	7"	Topmount	Yes	One
LBS4610-316P-1	18 13/16"	18 1/8"	10"	Topmount	Yes	One
LBS6407-316P-1	20 9/16"	16 1/8"	7"	Topmount	Yes	One
ALBS6805-316P-1	20 9/16"	20 1/8"	5"	Topmount	Yes	One
LBS6807-316P-1	20 9/16"	20"	7"	Topmount	Yes	One
LBS6808-316P-1	20 9/16"	20"	8"	Topmount	Yes	One
LBS6810-316P-1	20 9/16"	20 1/8"	10"	Topmount	Yes	One
D6410-316PCB-1	18 1/8"	31 1/4"	10"	Topmount	Yes	One
LBD6408-316P-1	20 1/2"	31 1/4"	8"	Topmount	Yes	Two
LBD6410-316PCB-1	20 13/16"	31 1/4"	10"	Topmount	Yes	Two
UCS4608-316P-1	16 1/8"	18 1/8"	8"	Undermount	-	One
UCS4610-316P-1	16 1/8"	18 1/8"	10"	Undermount	-	One

Wall hung hand wash basins in Type 316/316L stainless steel



WHB1819-316-1
Wall hung basin in T316

MODEL	FRONT-BACK	LEFT-RIGHT	OVERALL HEIGHT	BOWL DEPTH	WASTE SIZE	WASTE INCLUDED
WHB1617-316-3	16 1/2"	17"	9 3/4"	6"	1 1/2"	Yes
WHB1819-316-3	18 1/2"	19"	10 1/2"	7"	1 1/2"	Yes

Cafeterias & Kitchens



Safe solutions for food-handling areas

Franke offers an extensive range of scullery sinks in single, double, and triple bowl configurations to stand up to the demands placed in high volume kitchens and cafeterias. NSF-2 compliant models for quick and effective clean up.



NSF-Compliant Scullery Sinks in 14 gauge stainless steel



WSL2424-1
Single compartment
scullery sink with no
drainboards



WDL2448-1
Double compartment
scullery sink with no
drainboards



WTL2472-1
Triple compartment
scullery sink with no
drainboards

MODEL	OVERALL FRONT-BACK	OVERALL LEFT-RIGHT	BOWL DEPTH	CONFIGURATION	DRAINBOARD LOCATION
WSL2418-1	30 1/2"	22 1/4"	14"	Single compartment	-
WSL2424-1	30 1/2"	28 1/4"	14"	Single compartment	-
WSL2418L-1	30 1/2"	40 1/4"	14"	Single compartment	Left
WSL2418R-1	30 1/2"	40 1/4"	14"	Single compartment	Right
WSL2424L-1	30 1/2"	52 1/4"	14"	Single compartment	Left
WSL2424R-1	30 1/2"	52 1/4"	14"	Single compartment	Right
WSL2418LR-1	30 1/2"	58 1/4"	14"	Single compartment	Left and Right
WSL2424LR-1	30 1/2"	76 1/4"	14"	Double compartment	Left and Right
WDL2436-1	30 1/2"	44 1/4"	14"	Double compartment	-
WDL2448-1	30 1/2"	56 1/8"	14"	Double compartment	-
WDL2436L-1	30 1/2"	62 1/8"	14"	Double compartment	Left
WDL2436R-1	30 1/2"	62 1/8"	14"	Double compartment	Right
WDL2448L-1	30 1/2"	80 1/8"	14"	Double compartment	Left
WDL2448R-1	30 1/2"	80 1/8"	14"	Double compartment	Right
WDL2436LR-1	30 1/2"	80 1/8"	14"	Double compartment	Left and Right
WDL2448LR-1	30 1/2"	104 1/8"	14"	Double compartment	Left and Right
WTL2454-1	30 1/2"	64 1/8"	14"	Triple compartment	-
WTL2472-1	30 1/2"	82 1/8"	14"	Triple compartment	-
WTL2454L-1	30 1/2"	78 1/8"	14"	Triple compartment	Left
WTL2454R-1	30 1/2"	78 1/8"	14"	Triple compartment	Right
WTL2472L-1	30 1/2"	106 1/8"	14"	Triple compartment	Left
WTL2472R-1	30 1/2"	106 1/8"	14"	Triple compartment	Right
WTL2454LR-1	30 1/2"	92 1/8"	14"	Triple compartment	Left and Right
WTL2472LR-1	30 1/2"	130 1/8"	14"	Triple compartment	Left and Right

Mop & Janitorial Sinks

The keepers of clean. Utility or janitorial spaces are a hub within any building, playing a key role in infection prevention. Tools, from mops to cloths to floor polishers make their way into multiple spaces - proper cleaning of these tools of the trade help to prevent the spread of infection.



A robust option for janitorial spaces

When corrosion-resistance is key, the choice is clear: specify Type 316/316L stainless steel sinks for the job. The addition of molybdenum dramatically improves stainless steel's resistance to concentrated cleaners. The best choice for janitorial rooms.



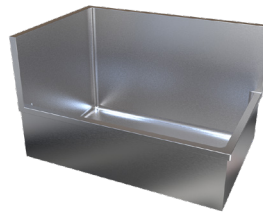
FSS151509-316-1

Type 316 / 316L stainless steel
Single wall installation
Exterior Dimensions: 17 ½ x 17 ½ x 9 1/8"
Inside depth: 9"



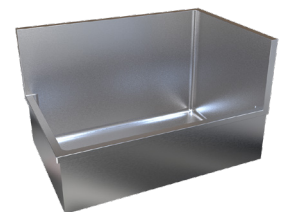
FSS222210-316-1

Type 316 / 316L stainless steel
Left & right splash
Exterior Dimensions: 24 x 24 x 22"
Inside depth: 10"



FSSL223410-316-1

Type 316 / 316L stainless steel
Left splash with straight front
Exterior Dimensions: 24 x 36 x 22"
Inside depth: 10"



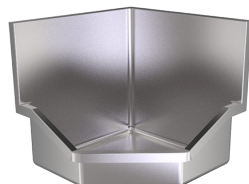
FSSR223410-316-1

Type 316 / 316L stainless steel
Right splash with straight front
Exterior Dimensions: 24 x 36 x 22"
Inside depth: 10"



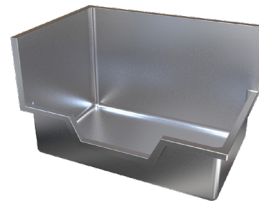
FSS2210-316-1

Type 316 / 316L stainless steel
Left & right splash with angular front
Exterior Dimensions: 24 x 24 x 22"
Inside depth: 10"



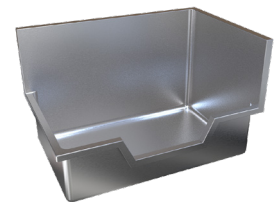
FSSO2210-316-1

Type 316 / 316L stainless steel
Left & right splash with drop front
Exterior Dimensions: 24 x 24 x 22"
Inside depth: 6"



FSSOL223410-316-1

Type 316 / 316L stainless steel
Left splash with drop front
Exterior Dimensions: 24 x 36 x 22"
Inside depth: 6"



FSSOR223410-316-1

Type 316 / 316L stainless steel
Right splash with drop front
Exterior Dimensions: 24 x 36 x 22"
Inside depth: 6"

Wall Carriers & Accessories

Medi-flo Optional Accessories



In-wall carrier for Medi-flo
IWC2104

Floor mounted in-wall carrier designed for Medi-flo (HWSS2321W-00) sink. Preset stud locations simplify installation. Steel uprights with welded feet. Integrated rough in box. Hardware included.



Mixing valve for Medi-flo & Ozo-flo
MEDI-MIX

Optional thermostatic mixing valve pre-programmed for Medi-flo HWSS2321W-00 sink and Ozo-flo faucets HWF05, HWF23, and HWF43. Adjustable outlet temperature range: 95 – 118°F (35 – 48°C). Factory set temperature 95°F (40°C).



Replacement shroud for Medi-flo
MEDI-SHR

Removable replacement shroud for HWSS2321W-00. White polymer composite material.

Healthcare Wall Carrier & Washroom Accessories



In-wall carrier for wall hung basins
IWC2203

Universal floor mounted in-wall carrier designed for wall hung basins and water coolers. Steel uprights with welded feet. Includes lower bracket for added support. Mounting hardware included.



Back rest
CM-16104

Back rest for wall mount toilet. Stainless bar with flanges and covers, with antique white solid core plastic laminate panel back.



Back rest for standard installations
CM-16104-WM

Back rest for wall mount toilet for industry standard spud location. Stainless bar with flanges and covers, with antique white solid core plastic laminate panel back.

Hands-free faucets with laminar flow



Laminar flow deck mount faucet
HHF180-6L

Hands-free operation. Open spout, free of flow control or aerators for healthcare applications. 6.0 Lpm / 1.5 gpm laminar flow rate. Overall dimensions: 2 x 5 1/4 x 10 1/4"



Laminar flow wall mount faucet
HHF180-6L-W

Hands-free operation. Open spout, free of flow control or aerators for healthcare applications. 6.0 Lpm / 1.5 gpm laminar flow rate. Overall dimensions: 2 x 7 1/4 x 11"



Mixing valve
MIX-LF

Thermostatic mixing valve for use with Franke faucets.

Antimicrobial nanocoating

Advanced Surface Technology for Healthcare

Nanocoating is a powerful surface treatment is applied to stainless steel in ultra-thin microscopic layers. This engineered coating bonds at the molecular level, creating an invisible shield that is more resistant to wear and corrosion.



Helps prevent biofilm

Antibacterial surface treatment slows cell reproduction on the surface before biofilm can take hold.

Superior chemical resistance

Chemical resistant to the most commonly used hospital cleaning solutions.

Clinical wash basins

Antimicrobial product protection is available on select Clinical Hand Wash Basins for added protection.

White solid surface sinks

Our white Franke Commercial sinks are formed from a composite mineral material that is solid throughout. A patient room sink with appealing curves and a soft Alpine White shade gives a residential feel that is more homey and less clinical.

A stable compound consisting of 80% natural materials such as marble powder, sandstone, and quartz sand mixed with 20% high-quality unsaturated polyester resin.

Durable solid surface material

Stain-resistant, chip-resistant, and impact-resistant for years of service in the busiest of hospitals.

Easy to clean and maintain

Non-porous surface is hygienic and very easy to clean. Antibacterial material slows cell reproduction on the surface.

Warm to the touch

Naturally appealing curves and warm to the touch.



Commercial facilities solutions

Beyond patient rooms, nurses stations, and operating theaters, Franke offers fixtures for every space. Not only have we developed aesthetically attractive washroom solutions, we offer hard-working, reliable products for employee lounges, food preparation, janitorial hubs, maintenance shops, as well as custom fabricated fixtures to meet your exacting specifications.



Hospital staff, administrators, and visitors deserve access to safe hand hygiene spaces. Choose Franke sinks to make hand washing a wonderful experience.



Facility owners trust Franke

Durable stainless steel sinks in every size and configuration to wash up food preparation equipment.



Vanity basins in lustrous stainless steel for elegant hand washing in washroom facilities.



Custom fabrication available for that right-sized sink or stainless steel countertop. Contact Franke to learn more.





Peace of mind and guaranteed performance.

Customer Care and Technical Assistance

If you ever experience a problem with any Franke product, simply contact our Customer Service.

Our dedicated North American customer care team is always here to assist you. Rest assured that a solution is a quick phone call away. We will restore the product's functionality through a replacement part or warranty replacement. Your satisfaction is our top priority, it's why we're here.



CALL US

CANADA: 1-855-446-5663

USA: 1-855-526-0503

Certification

Our products are tested and certified to the highest standards to one or more of the independent certifications below.



cUPC®



For more information and for details on warranty and terms and conditions: www.franke.com



Franke Home Solutions

Contact us
Canada: 855-446-5663
USA: 855-526-0503
[franke.com](https://www.franke.com)

#BR001-HEALTHCARE-EN 0925

