

VARIUScare

The new line of washbasins for accessible sanitary facilities

FORM AND FUNCTIONALITY

- A softly rounded basin contour encloses the modern shallow bowl.
- The shape of the washbasin takes into account the needs of people with physical disabilities.
- The grip edge integrated into the washbasin makes it possible for users to pull themselves up and find support on all sides.
- Applying the two-sense principle (tactile and visual), VARIUScare is additionally available with seamlessly recessed colour stripes in the edge of the washbasin.
- The standard colour stripe in Umbra grey (RAL 7022) creates a high contrast to the Alpine white washbasin colour.
- Other RAL colours are possible on request.
- The washbasin range meets the requirements of the German DIN 18040, the Austrian ÖNORM B1600/1601 and the Swiss SIA 500 norms.
- The perfect combination for comfortable and safe hand washing is also enhanced by the accessible F5L-Mix single-lever mixer with its extended, ergonomic grip handle.



VARIUScare with colour stripe in the basin edge

MATERIAL

- Resin-bonded mineral material with pore-free and high-gloss surface
- Feels pleasantly warm and smooth
- Has exceptionally good cleaning properties
- Withstands toughest stress conditions and is significantly more resistant to breakage than sanitary ware
- Special repair sets make it easy to repair surface damage



The easy-to-grip edge of the washbasin makes it possible for users to pull themselves up and find support on all sides.

*Make
it
Wonderful*

FRANKE

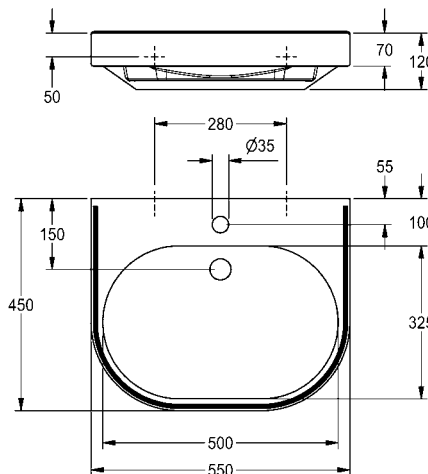
VARIUScare single washbasin

made of MIRANIT resin-bonded mineral material, with non-porous smooth surface (temperature resistant up to 80°C). Alpine white colour.

Accessible by wheelchair and ergonomically designed on the 2-senses-principle (tactile and visual) with integrated grip edge and colour stripe (RAL 7022). With seamless incorporated bowl, without overflow. With tap hole. Integral back panel with integrated brackets and holes for fixing. Rear contoured edge. Including fastening material (hanger bolts and dowels).



ANMW502



TYPE	ARTICLE NUMBER	MEETS STANDARD
Dimensions (W x H x D): 650 x 120 x 550 mm Bowl dimensions (W x H x D): 600 x 80 x 420 mm	ANMW500 2030020956	DIN 18040 ÖNORM B1600/1601
Dimensions (W x H x D): 550 x 120 x 450 mm Bowl dimensions (W x H x D): 500 x 80 x 325 mm	ANMW502 2030020959	DIN 18040 (for hand basins) ÖNORM B1600/1601
Dimensions (W x H x D): 450 x 100 x 350 mm Bowl dimensions (W x H x D): 400 x 60 x 230 mm	ANMW504 2030020962	ÖNORM B1600/1601 (for hand basins) SIA 500

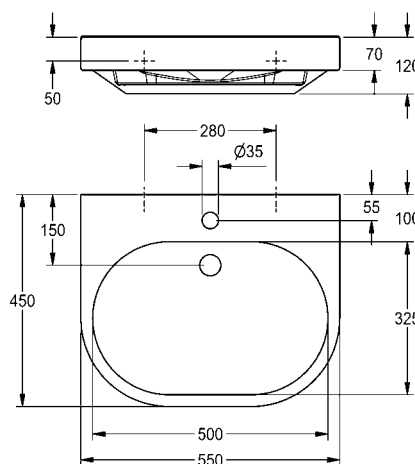
VARIUScare single washbasin

made of MIRANIT resin-bonded mineral material, with non-porous smooth surface (temperature resistant up to 80°C). Alpine white colour.

Accessible by wheelchair and ergonomically designed with integrated grip edge. With seamless incorporated bowl, without overflow. With tap hole. Integral back panel with integrated brackets and holes for fixing. Rear contoured edge. Including fastening material (hanger bolts and dowels).



ANMW503



TYPE	ARTICLE NUMBER	MEETS STANDARD
Dimensions (W x H x D): 650 x 120 x 550 mm Bowl dimensions (W x H x D): 600 x 80 x 420 mm	ANMW501 2030020958	DIN 18040 ÖNORM B1600/1601
Dimensions (W x H x D): 550 x 120 x 450 mm Bowl dimensions (W x H x D): 500 x 80 x 325 mm	ANMW503 2030020961	DIN 18040 (for hand basins) ÖNORM B1600/1601
Dimensions (W x H x D): 450 x 100 x 350 mm Bowl dimensions (W x H x D): 400 x 60 x 230 mm	ANMW505 2030020963	ÖNORM B1600/1601 (for hand basins) SIA 500

OPTIONAL ACCESSORIES

Strainer waste valve G 1 1/4 B

Z-ANMW901 **2000100854**

Dome waste G 1 1/4 B

Z-ANMW900 **2000100861**



Franke Water Systems

ws-info.int@franke.com
www.franke.com