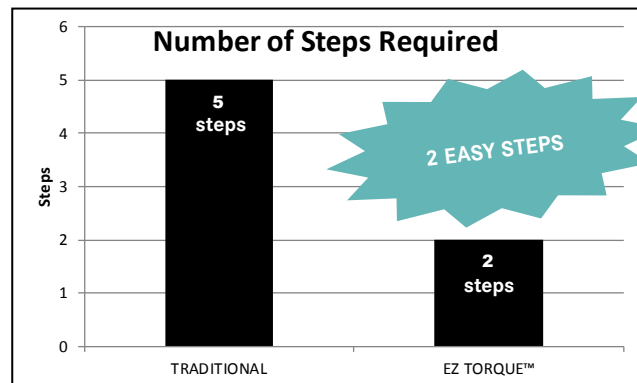
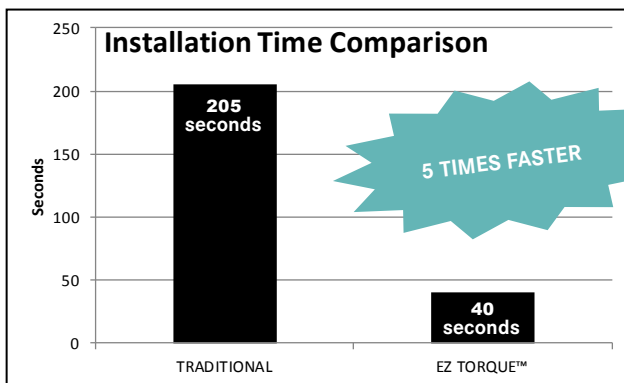


# EZ TORQUE™ INSTALLATION COMPARISON

Franke EZ Torque fasteners are an innovative topmount sink fastening solution used to secure the rim of the sink ledge tight to the countertop. The charts below outline the differences in time savings between the traditional and competitors' method and the Franke EZ TORQUE™ method. On large projects, where many sinks must be installed, the time savings for plumbers is quite substantial. In this comparison, the speed for even one sink installation is FIVE times faster in 2 easy steps. EZ TORQUE™ saves time and effort!

## THE NEW STANDARD IN SINK INSTALLATION!

5 times faster in 2 easy steps



### TRADITIONAL /COMPETITORS' METHOD

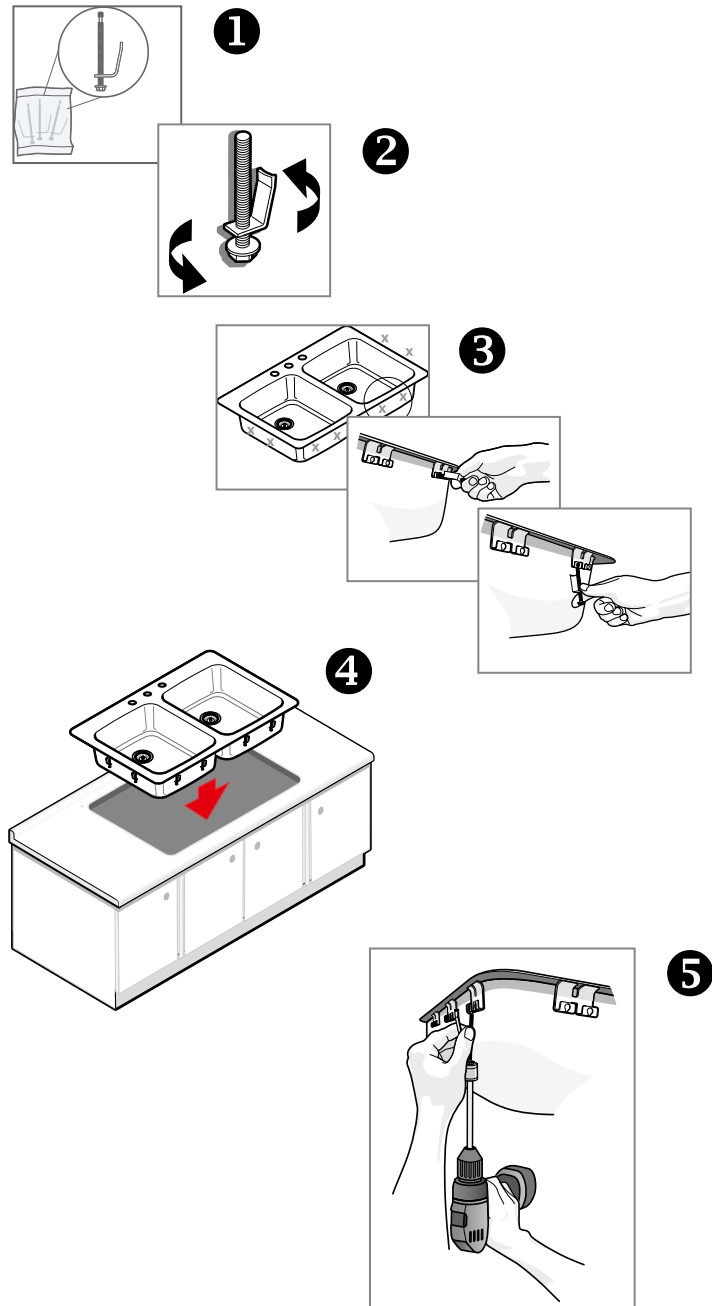
STEP #	% TIME*	# OF SECONDS
1 Locate bag of fasteners	3%	5
2 Set claw position to counter top thickness	29%	60
3 Hang fasteners on sink	17%	35
4 Lower sink into countertop	7%	15
5 Hold and tighten fasteners	44%	90
<b>TOTAL TIME (in seconds)</b>		<b>205</b>

### EZ TORQUE™ METHOD

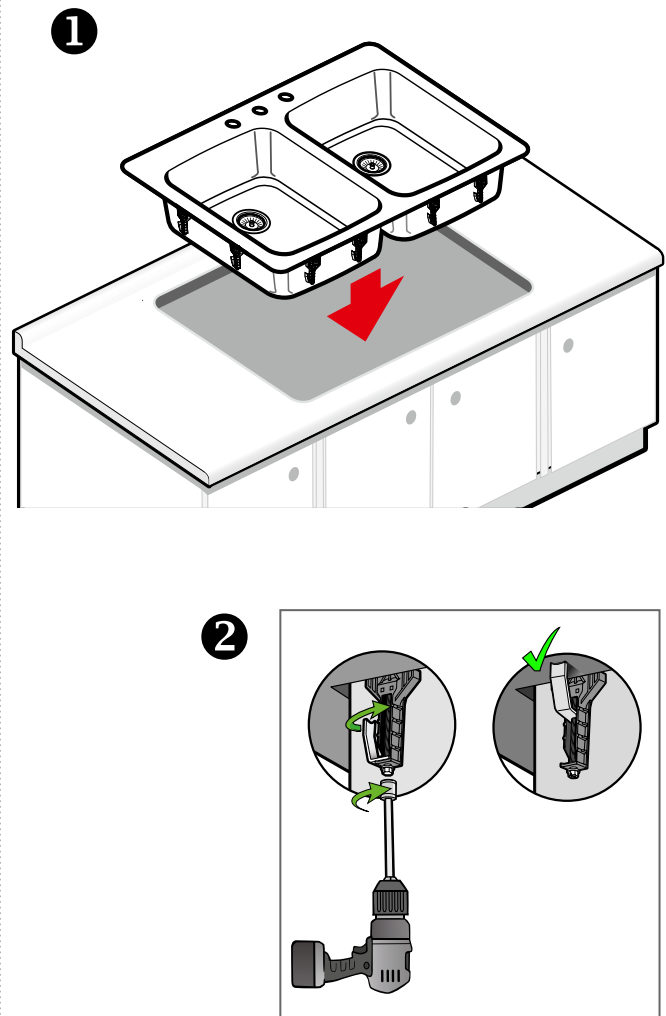
STEP #	% TIME*	# OF SECONDS
1 Lower sink into countertop	12%	5
2 Tighten fasteners	88%	35
<b>TOTAL TIME (in seconds)</b>		<b>40</b>

\* Figures rounded for ease of reading

## TRADITIONAL/COMPETITORS' METHOD



## FRANKE EZ TORQUE™ METHOD



- ..... Requires 5 steps
- ..... Fasteners must be hand mounted onto sink
- ..... Fasteners can go missing on jobsite
- ..... Fasteners hang loosely on sink and may fall off during cabinet installation
- ..... May require installer to lay inside the cabinet
- ..... Requires 2 hands: 1 to steady the fastener, and 1 to hold the drill

- ..... Requires 2 easy steps
- ..... Fasteners arrive pre-mounted to sink
- ..... No missing parts
- ..... Pre-installed fasteners are snug on sink making it quick and easy to drop into cabinet
- ..... Installer can easily locate the fasteners from the front of the cabinet
- ..... Easy, single handed tightening with a drill